

HA 3931 Roadline Salvage				
Landing / Rd	Size (m)		Area (Ha)	Volume
65	115	x 80	0.62	339.4
66	175	x 70	0.90	492.7
67	145 wide	x 175 long	1.73	947.0
68	180	x 80	1.12	613.1
69	115 wide	x 105 long	1.16	635.0
70	105	x 100	0.9	492.7
Morrison's Road Leg 1	665	x 30	1.59	870.4
Morrison's Road Leg 2	370	x 60	1.23	673.3
Stub Road C	300	x 30	0.90	492.7
Salvage Total			10.15	5556.1

Engineering		Forest Code: Morr		
Landing	Size (m)	Type	\$ Eng cost	
65	70 x 35	Capital - Mulch	3000	
66	70 x 35	Capital - Mulch	3000	
67	70 Long x 75 Wide	Capital - Construct	5000	
68	70 x 35	Capital - Mulch	3000	
69	75 wide x 70 long	Capital - Construct	5000	
70	70 x 35	Capital - Mulch	3000	
Morrison's Road	1285	Capital - Construct	160625	
Stub Road B	145	Capital - Construct	18125	
Stub Road C	440	Capital - Construct	55000	
Stub Road D	220	Capital - Construct	27500	
TT 65, 68, 69, 70	10 x 12	Capital - Construct		
CP 65, 69, 70	10 x 15	Capital - Construct		
CP 67	30 x 3	Capital - Construct		
Clearfell	Area (Ha)	Vol		283250 Total
GB Landing	Area (Ha)	Vol	AHD (m)	MHD (m)
65	14.27	7811	264	400
66	3.95	2162	201	305
67	7.23	3958	248	375
68	7.23	3958	297	450
69	14.54	7959	224	340
70	10.14	5551	221	335
GB Total	57.36	31399		
HA Total	67.51	36955		

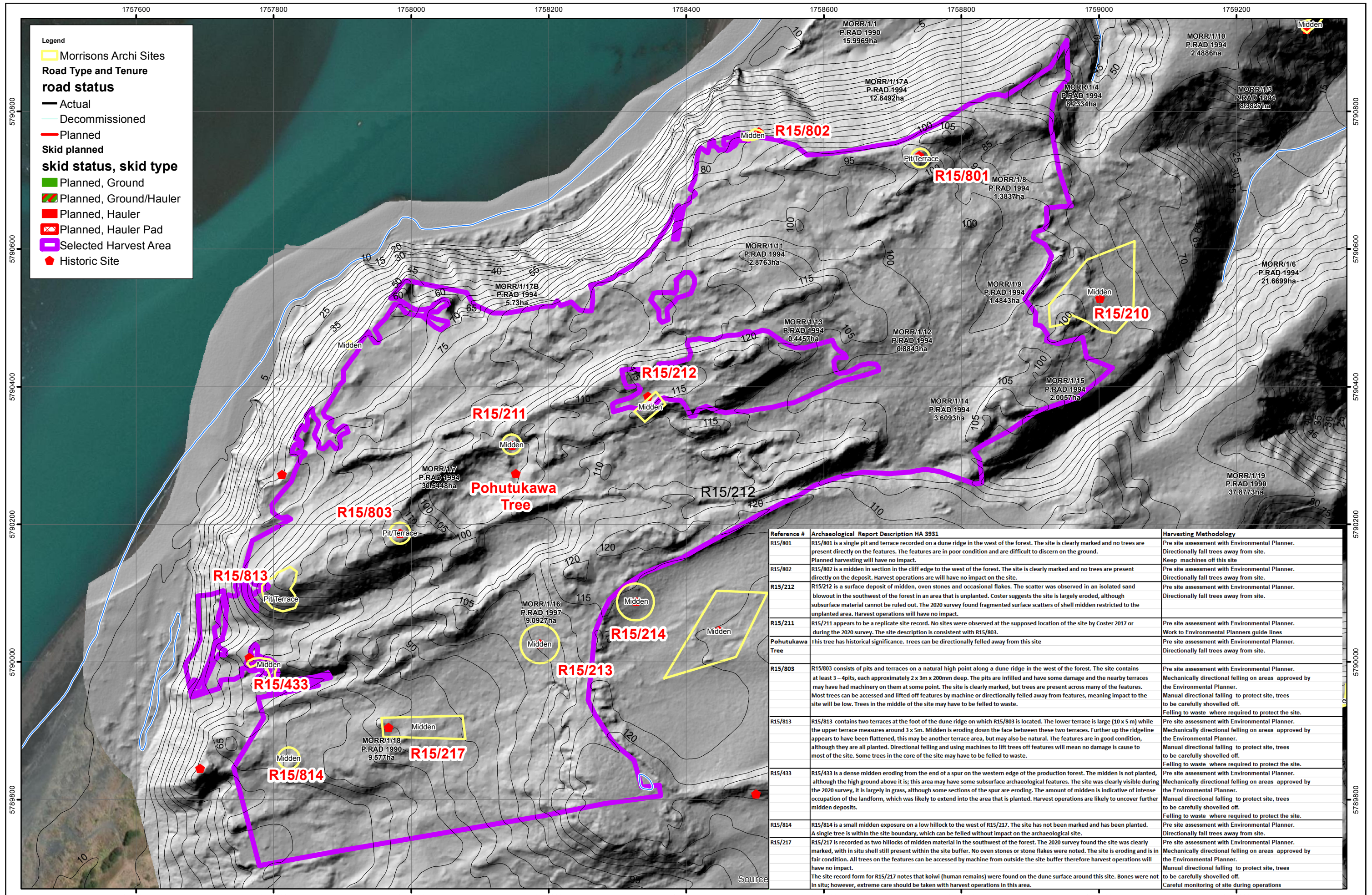


Scale: 1:5,000
 Print Date: 18/02/2021
 Map Type: A3L
 Created By: Mitchell Durie

Operational Map HA 3931 - Draft
Morrison Rd - MORR - Cmpt 1

Stream Classification

- No disturbance area
- Controlled disturbance/activities. See environmental notes
- Minimal disturbance/activities associated with stream (side) management



- Legend**
- Morrisons Archi Sites
 - Road Type and Tenure**
 - road status**
 - Actual
 - Decommissioned
 - Planned
 - Skid planned**
 - skid status, skid type**
 - Planned, Ground
 - Planned, Ground/Hauler
 - Planned, Hauler
 - Planned, Hauler Pad
 - Selected Harvest Area
 - ♦ Historic Site

Reference #	Archaeological Report Description HA 3931	Harvesting Methodology
R15/801	R15/801 is a single pit and terrace recorded on a dune ridge in the west of the forest. The site is clearly marked and no trees are present directly on the features. The features are in poor condition and are difficult to discern on the ground. Planned harvesting will have no impact.	Pre site assessment with Environmental Planner. Directionally fall trees away from site. Keep machines off this site
R15/802	R15/802 is a midden in section in the cliff face to the west of the forest. The site is clearly marked and no trees are present directly on the deposit. Harvest operations are will have no impact on the site.	Pre site assessment with Environmental Planner. Directionally fall trees away from site.
R15/212	R15/212 is a surface deposit of midden, oven stones and occasional flakes. The scatter was observed in an isolated sand blowout in the southwest of the forest in an area that is unplanted. Coster suggests the site is largely eroded, although subsurface material cannot be ruled out. The 2020 survey found fragmented surface scatters of shell midden restricted to the unplanted area. Harvest operations will have no impact.	Pre site assessment with Environmental Planner. Directionally fall trees away from site.
R15/211	R15/211 appears to be a replicate site record. No sites were observed at the supposed location of the site by Coster 2017 or during the 2020 survey. The site description is consistent with R15/803.	Pre site assessment with Environmental Planner. Work to Environmental Planners guide lines
Pohutukawa Tree	This tree has historical significance. Trees can be directionally felled away from this site	Pre site assessment with Environmental Planner. Directionally fall trees away from site.
R15/803	R15/803 consists of pits and terraces on a natural high point along a dune ridge in the west of the forest. The site contains at least 3 – 4 pits, each approximately 2 x 3 m x 200mm deep. The pits are infilled and have some damage and the nearby terraces may have had machinery on them at some point. The site is clearly marked, but trees are present across many of the features. Most trees can be accessed and lifted off features by machine or directionally felled away from features, meaning impact to the site will be low. Trees in the middle of the site may have to be felled to waste.	Pre site assessment with Environmental Planner. Mechanically directional felling on areas approved by the Environmental Planner. Manual directional felling to protect site, trees to be carefully shovelled off. Felling to waste where required to protect the site.
R15/813	R15/813 contains two terraces at the foot of the dune ridge on which R15/803 is located. The lower terrace is large (10 x 5 m) while the upper terrace measures around 3 x 5m. Midden is eroding down the face between these two terraces. Further up the ridgeline appears to have been flattened, this may be another terrace area, but may also be natural. The features are in good condition, although they are all planted. Directional felling and using machines to lift trees off features will mean no damage is cause to most of the site. Some trees in the core of the site may have to be felled to waste.	Pre site assessment with Environmental Planner. Mechanically directional felling on areas approved by the Environmental Planner. Manual directional felling to protect site, trees to be carefully shovelled off. Felling to waste where required to protect the site.
R15/433	R15/433 is a dense midden eroding from the end of a spur on the western edge of the production forest. The midden is not planted, although the high ground above it; this area may have some subsurface archaeological features. The site was clearly visible during the 2020 survey, it is largely in grass, although some sections of the spur are eroding. The amount of midden is indicative of intense occupation of the landform, which was likely to extend into the area that is planted. Harvest operations are likely to uncover further midden deposits.	Pre site assessment with Environmental Planner. Mechanically directional felling on areas approved by the Environmental Planner. Manual directional felling to protect site, trees to be carefully shovelled off. Felling to waste where required to protect the site.
R15/814	R15/814 is a small midden exposure on a low hillock to the west of R15/217. The site has not been marked and has been planted. A single tree is within the site boundary, which can be felled without impact on the archaeological site.	Pre site assessment with Environmental Planner. Directionally fall trees away from site.
R15/217	R15/217 is recorded as two hillocks of midden material in the southwest of the forest. The 2020 survey found the site was clearly marked, with in situ shell still present within the site buffer. No oven stones or stone flakes were noted. The site is eroding and is in fair condition. All trees on the features can be accessed by machine from outside the site buffer therefore harvest operations will have no impact. The site record form for R15/217 notes that koivi (human remains) were found on the dune surface around this site. Bones were not in situ; however, extreme care should be taken with harvest operations in this area.	Pre site assessment with Environmental Planner. Mechanically directional felling on areas approved by the Environmental Planner. Manual directional felling to protect site, trees to be carefully shovelled off. Careful monitoring of site during operations



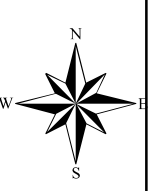
Scale: 1:5,000
 Print Date: 21/04/2021
 Map Type: A3L
 Created By: Mitchell Durie

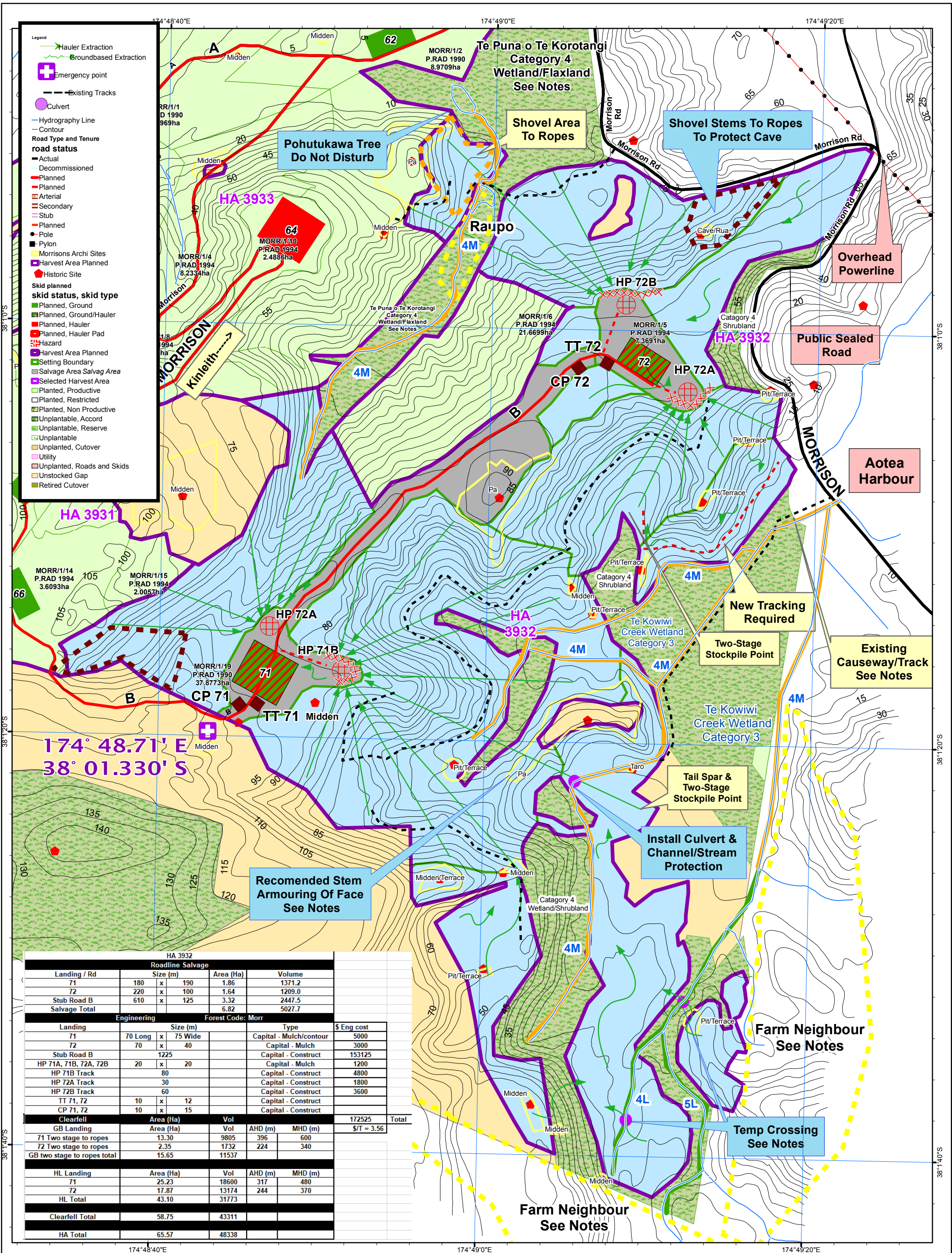
Archaeological Site Map HA 3931
Morrison Rd - MORR - Cmpt 1

0 50 100 200 300 400 500 Metres

Stream Classification

- No disturbance area
- Controlled disturbance/activities. See environmental notes
- Minimal disturbance/activities associated with stream (side) management



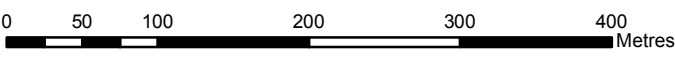


HA 3932					
Roadline Salvage					
Landing / Rd	Size (m)	Area (Ha)	Volume		
71	180 x 190	1.86	1371.2		
72	220 x 100	1.64	1209.0		
Stub Road B	610 x 125	3.32	2447.5		
Salvage Total		6.82	5027.7		
Engineering					
Landing	Size (m)	Type	\$ Eng cost		
71	70 Long x 75 Wide	Capital - Mulch/contour	5000		
72	70 x 40	Capital - Mulch	3000		
Stub Road B	1225	Capital - Construct	153125		
HP 71A, 71B, 72A, 72B	20 x 20	Capital - Mulch	1200		
HP 71B Track	80	Capital - Construct	4800		
HP 72A Track	30	Capital - Construct	1800		
HP 72B Track	60	Capital - Construct	3600		
TT 71, 72	10 x 12	Capital - Construct			
CP 71, 72	10 x 15	Capital - Construct			
Clearfell					
Area (Ha)	Vol	172525 Total			
GB Landing	Area (Ha)	Vol	AHD (m)	MHD (m)	\$/T = 3.56
71 Two stage to ropes	13.30	9805	396	600	
72 Two stage to ropes	2.35	1732	224	340	
GB two stage to ropes total	15.65	11537			
HL Landing	Area (Ha)	Vol	AHD (m)	MHD (m)	
71	25.23	18600	317	480	
72	17.87	13174	244	370	
HL Total	43.10	31773			
Clearfell Total					
	58.75	43311			
HA Total					
	65.57	48338			

Operational Plan HA 3932

Morrison Road - MORR - Cmp1 1

Scale: 1:5,000
 Print Date: 4/03/2021
 Map Type: A3L
 Created By: Mitchell Durie



Stream Classification	
	No disturbance area
	Controlled disturbance/activities. See environmental notes
	Minimal disturbance/activities associated with stream (side) management.



Reference #	Archaeological Report Description HA 3932	Harvesting Methodology
R15/112	R15/112 is a cave rua cut into a rock face on the northern aspect of a large ridgeline. The rua is in excellent condition. It has two 'bays', possible petroglyphs, and clear toki marks on its walls. The site is clearly marked and directional felling will ensure no damage to the site during removal of nearby trees. It is recommended that further marking is carried out uphill from the site to ensure no trees are dropped into the area of the site.	Pre site assessment with Environmental Planner. Mechanical directional felling away from the site. Manual directional felling to protect site, trees to be carefully shovelled away from site.
R15/805	R15/805 is a small terrace site overlooking Morrison's Road. The site is in good condition and is largely outside the forest boundary in a stand of indigenous bush. Adjacent trees can be easily felled away from features. Harvesting will have no impact on the site.	Pre site assessment with Environmental Planner. Directionally fall trees away from site.
R15/807	R15/807 consists of a possibly natural terrace that has been utilised by Maori. On the downhill (eastern) slope of the terrace a large scatter of midden is present, which appears to have been cast down the hill. Pine trees are present on the terrace and down the steep slope. Planned harvesting activity will have no impact on the terrace feature, but may disturb intact midden deposits.	Pre site assessment with Environmental Planner. Mechanical directional felling on areas approved by the Environmental Planner. Manual directional felling to protect site, trees to be carefully shovelled off.
R15/806	R15/806 consists of two terraces located on a natural knoll overlooking the wetland to the east of the forest. The site is marked and planted; however the terrain in this area and the relatively small size of the features means directional felling and lifting stems off the site will be sufficient to cause no damage	Pre site assessment with Environmental Planner. Manual directional felling to protect site, trees to be carefully shovelled off. Felling to waste where required to protect the site.
R15/172	R15/172 is a rectangular pa site located on a high spot of one of the major ridges running north from the Pukeatua trig. The site consists of a rectangular shaped main platform, with subtle indications of further divisions. A bank and terrace run around the north and west of the site, while the naturally steep topography is utilised to the south and east. To the south east of the main platform a flight of terraces runs down the ridgeline; no clear evidence of pits is present on the site. The site is in excellent condition, it is clearly marked; but has been fully planted. A specific felling strategy will be required to minimise ground disturbance in this area.	Pre site assessment with Environmental Planner. Mechanical directional felling on areas approved by the Environmental Planner. Manual directional felling to protect site, trees to be carefully shovelled off. Felling to waste where required to protect the site.
R15/430	R15/430 is a pit/terrace site located on a low spur immediately to the west of the Te Kowiri stream. The site is in good condition, is well marked and is planted. The current harvest plan calls for trees to be moved uphill from the site via hauler. Dragging of stems across the site is likely to impact the archaeological features. Rigging a tail tree in this area may provide sufficient lift to minimise disturbance.	Pre site assessment with Environmental Planner. Mechanical directional felling on areas approved by the Environmental Planner. Manual directional felling to protect site, trees to be carefully shovelled off. Felling to waste where required to protect the site.
R15/796	R15/796 is a small pit/terrace site located on a ridgeline below R15/172. The pit is approximately 100mm deep and ephemeral. The terrace is in good condition and is not planted, although a wilding pine is present, which should be felled to waste. Harvest will have no impact on the site.	Pre site assessment with Environmental Planner. Directionally fall trees away from site.
R15/171	R15/171 is a pa site located on the end of a narrow spur overlooking the Te Kowiri Stream. The site is unplanted (although some wilding pines are present), and largely in grass. The main platform is separated from the spur with a large ditch and bank, inside these defences a large number of rectangular storage pits are present and in good condition. The southern slope of the pa contains no features, and is planted; but will be difficult to harvest due to the presence of the pa (above) and taro (below). Trees in this area may have to be felled to waste.	Pre site assessment with Environmental Planner. Mechanical directional felling on areas approved by the Environmental Planner. Manual directional felling to protect site, trees to be carefully shovelled off. Felling to waste where required to protect the site.
R15/428	R15/428 is a small terraced area downhill from a forestry track that sidles around the hill bordering Hawaiki Iti. The terrace contains a probable pit approximately 4m x 4m next to a dead wilding tree. The site is not planted; harvest will have no impact on the site.	
R15/798	R15/798 is several stands of taro, regarded as remnants of early Polynesian cultivation in the area. Plants are located in a number of patches to the west of the wetland area, but are in particularly good condition south of R15/171 where they are found adjacent to running water. Much of the taro is located outside the forest; however, some stands may be impacted by hauler operations in this area.	Pre site assessment with Environmental Planner. Directionally fall trees away from site. Work within the Environmental Planners or archaeologist guidelines
R15/797	R15/797 the site consists of a single pit and terrace on a low-lying small spur northwest of R11/171. The site is in fair condition, with some surface erosion causing features to become indistinct. The site is clearly marked and is small enough that trees can easily be removed with no ground disturbance.	Pre site assessment with Environmental Planner. Mechanical directional felling on areas approved by the Environmental Planner. Manual directional felling to protect site, trees to be carefully shovelled off.
R15/425	R15/425 is a midden/terrace site on a spur directly below (east) of R11/216. The site was originally recorded as a midden, but in his update Coster included a singular terrace. Like Coster's survey, the 2020 survey did not find the midden, but the terrace was present, although it was not clear. The terrace is marked, trees are largely excluded, but are present on the southern margin. Harvest operations around this site should cause no ground disturbance.	Pre site assessment with Environmental Planner. Mechanical directional felling on areas approved by the Environmental Planner. Manual directional felling to protect site, trees to be carefully shovelled off. Felling to waste where required to protect the site.
R15/216	R15/216 consists of at least four terraces on a small spur overlooking pa site R15/171 to the east. It is also immediately to the west of R11/425. The site is clearly marked and is planted. One terrace is clear, but further terracing is ill-defined. The discrete nature of the site mean that harvest operations should have minimal impact.	Pre site assessment with Environmental Planner. Mechanical directional felling on areas approved by the Environmental Planner. Manual directional felling to protect site, trees to be carefully shovelled off. Felling to waste where required to protect the site.
R15/799	R15/799 is a collection of four open rectangular pits located on a thin ridge near the boundary of the forest. The pits are generally clear and in good condition, although one pit is filled and ill-defined. The site is in good condition, it is clearly marked, but has been planted. The discrete nature of the features and local topography mean that harvest operations should have minimal impact.	Pre site assessment with Environmental Planner. Mechanical directional felling on areas approved by the Environmental Planner. Manual directional felling to protect site, trees to be carefully shovelled off. Felling to waste where required to protect the site.
R15/426	R15/426 is located on a wide, flat piece of high ground in the south of the forest. The margins of the hill have large amount of in-situ and redistributed midden with associated charcoal. No features are clear on the top of the hill, although the large amount of midden on the slope below the flat natural platform is highly suggestive of occupation. Felling and dragging stems across the slope of the site is likely to impact several small in-situ midden deposits. Moreover, while no surface features are present it is possible that ground disturbance on the top of the landform will uncover further archaeological deposits.	Pre site assessment with Environmental Planner. Documented tree removal plan in consultation with the Environmental Planner. Manual directional felling to protect site, trees Felling to waste where required to protect the site.
R15/810	R15/810 is an eroding midden, probably related to R15/426, which lies just outside the boundary fence adjacent to a small area of native. Harvesting will not impact the site.	Pre site assessment with Environmental Planner. Directionally fall trees away from site.
R15/809	R15/809 is a single terrace on the western side of a flat spur that projects into the surrounding swamp. No features were observed on the flat area behind the terrace, although the nature and location of the landform are consistent with occupation, which may result in subterranean features. The slope below the terrace has a large amount of eroding midden. The site is in good condition, the visible terrace is not directly planted on and nor is the slope on which the midden is located. The current harvest plan indicates that felled stems will be shovelled north past/over the site. Although there is a relatively small amount of wood in the stand a route should be identified that avoids the site and minimises ground disturbance on the top of the landform.	Pre site assessment with Environmental Planner. Documented tree removal plan in consultation with the Environmental Planner. Manual directional felling to protect site, trees Felling to waste where required to protect the site.
R15/429	R15/429 is a Midden in the sand dunes outside the forest plantation. This site would only be affected if Engineering were to deviate from the planned roadline or potentially if trees were felled in that direction.	Pre site assessment with Environmental Planner if work require. Work within the Environmental Planners guidelines
R15/111	R15/111 is a well-preserved pa on a headland overlooking a swamp immediately south of Aotea township. The site consists of a main elevated platform with two large terraces extending around its north and west, large pits are clearly present on the upper terrace. Smaller terraces run down the northern spur toward the wetland below. The site remains in excellent condition and has been marked, the upper platform has been excluded from planting but much of the rest of the site has been planted. Peripheral trees can be removed with minimal impact on features using high-stumps and directional felling. Trees on the western portion of the terraces may be able to be reached and removed by machine with minimal surface damage; however, slewing is likely to occur in order to reach trees in the northern section of the large terraces. Trees that cannot be removed without damage to archaeological features must be felled to waste. A specific harvest strategy should be developed for this site.	Pre site assessment with Environmental Planner. Documented tree removal plan in consultation with the Environmental Planner. Manual directional felling to protect site, trees Felling to waste where required to protect the site.
R15/800	R15/800 consists of two dense midden deposits immediately uphill from R15/111. One deposit appears to be in-situ and the other is a diffuse scatter of shell on the surface. The periphery of the deposits is marked with yellow tape, some trees are within the taped zone. The site is small meaning trees can easily be accessed without entering the site boundary. Lifting and shovelling felled stems away from the site will cause no disturbance to the site.	Pre site assessment with Environmental Planner. Documented tree removal plan in consultation with the Environmental Planner. Manual directional felling to protect site, trees Felling to waste where required to protect the site.

174°49'0"E 174°49'20"E

Legend

Road Type and Tenure

- Actual
- Decommissioned
- Planned

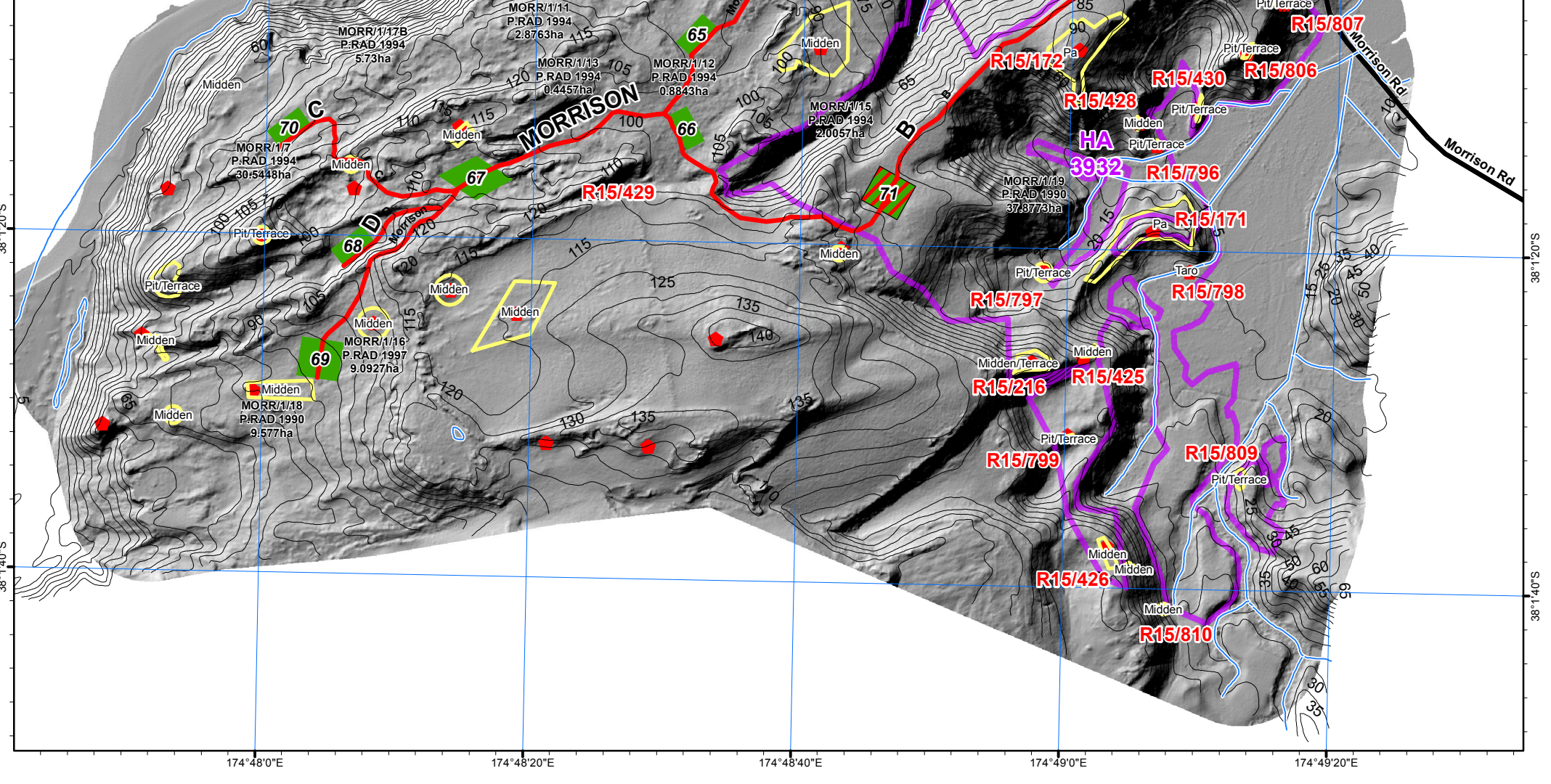
road status

- Morrions Archi Sites
- ◆ Historic Site

Skid planned

skid status, skid type

- Planned, Ground
- Planned, Ground/Hauler
- Planned, Hauler
- Planned, Hauler Pad



Hancock Forest Management
A Manulife Investment Management Company

Scale: 1:10,000
Print Date: 14/04/2021
Map Type: A3L
Created By: Mitchell Durie

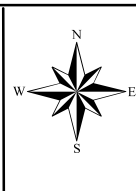
Archaeological Site Map HA 3932

Morrison Road - MORR - Cmpt 1

0 50 100 200 300 400 Metres

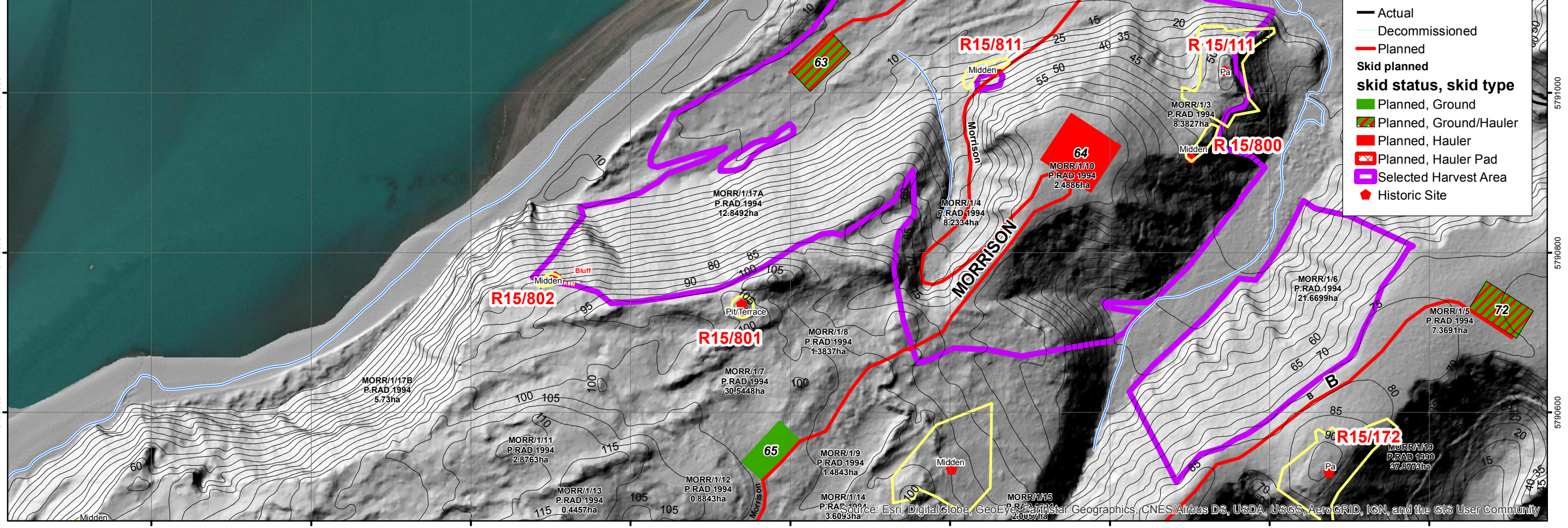
Stream Classification

- No disturbance area
- Controlled disturbance/activities. See environmental notes
- Minimal disturbance/activities associated with stream (side) management.



1758000 1758200 1758400 1758600 1758800 1759000 1759200 1759400 1759600

Reference #	Archaeological Report Description HA 3933	Harvesting Methodology
R15/811	R15/811 is a midden exposed in a forestry track leading up onto the high ground from the low dunes to the north of the forest. The midden has an in-situ section around 5m in length, but previous machine tracking has distributed material across a larger section of the track. Any track upgrades are likely to destroy the remainder of the in-situ midden.	Destruction of midden required for new road.
R15/812	R15/812 is a small patch of midden located on the low ground to the north of the forest. Visible sections seem to have been cast up by tree root action and further subterranean deposits are likely to be present. The dense ground coverage in the area makes accurate assessment of the condition difficult. Harvesting activity may expose additional midden in this area and across the large flat area at the north of the forest.	Pre site assessment with Environmental Planner. Mechanically directional felling away from site. Manual felling if required to protect site. Trees to be carefully shovelled off.
R15/804	R15/804 is a concentrated shell midden on a low mound within the low-lying area to the north of the forest. The midden was not relocated during survey due to large amounts of pine needles covering the ground surface. Historic aerial photographs and the confirmed presence of two other midden in the area suggests large amounts of midden is present in the low dunes to the north of the forest, which may be uncovered during harvest.	Pre site assessment with Environmental Planner. Mechanically directional felling away from site. Manual felling if required to protect site. Minor disturbance to area from roading construction a possibility.
15/111	15/111 is a well-preserved pa on a headland overlooking a swamp immediately south of Aotea township. The site consists of a main elevated platform with two large terraces extending around its north and west, large pits are clearly present on the upper terrace. Smaller terraces run down the northern spur toward the wetland below. The site remains in excellent condition and has been marked, the upper platform has been excluded from planting but much of the rest of the site has been planted. Peripheral trees can be removed with minimal impact on features using high-stumps and directional felling. Trees on the western portion of the terraces may be able to be reached and removed by machine with minimal surface damage; however, slewing is likely to occur in order to reach trees in the northern section of the large terraces. Trees that cannot be removed without damage to archaeological features must be felled to waste. A specific harvest strategy should be developed for this site.	Pre site assessment with Environmental Planner. Mechanically directional felling on areas approved by the Environmental Planner. Manual directional felling to protect site, trees to be carefully shovelled off. Felling to waste where required to protect the site.
R15/800	R15/800 consists of two dense midden deposits immediately uphill from R15/111. One deposit appears to be in-situ and the other is a diffuse scatter of shell on the surface. The periphery of the deposits is marked with yellow tape, some trees are within the taped zone. The site is small meaning trees can easily be accessed without entering the site boundary. Lifting and shovelling felled stems away from the site will cause no disturbance to the site.	Pre site assessment with Environmental Planner. Mechanically directional felling away from site. Manual directional felling to protect site, trees to be carefully shovelled off.
R15/801	R15/801 is a single pit and terrace recorded on a dune ridge in the west of the forest. The site is clearly marked and no trees are present directly on the features. The features are in poor condition and are difficult to discern on the ground. Planned harvesting will have no impact.	Pre site assessment with Environmental Planner. Directionally fall trees away from site. Keep machines off this site
R15/802	R15/802 is a midden in section in the cliff edge to the west of the forest. The site is clearly marked and no trees are present directly on the deposit. Harvest operations are will have no impact on the site.	Pre site assessment with Environmental Planner. Directionally fall trees away from site. Keep machines off this site
R15/172	R15/172 is a rectangular pa site located on a high spot of one of the major ridges running north from the Pukeatua trig. The site consists of a rectangular shaped main platform, with subtle indications of further divisions. A bank and terrace run around the north and west of the site, while the naturally steep topography is utilised to the south and east. To the south east of the main platform a flight of terraces runs down the ridgeline; no clear evidence of pits is present on the site. The site is in excellent condition, it is clearly marked; but has been fully planted. A specific felling strategy will be required to minimise ground disturbance in this area.	Pre site assessment with Environmental Planner. Do Not disturb site



Scale: 1:5,000
Print Date: 4/03/2021
Map Type: A3L
Created By: Mitchell Durie

Archaeological Site Map HA 3933 - Draft

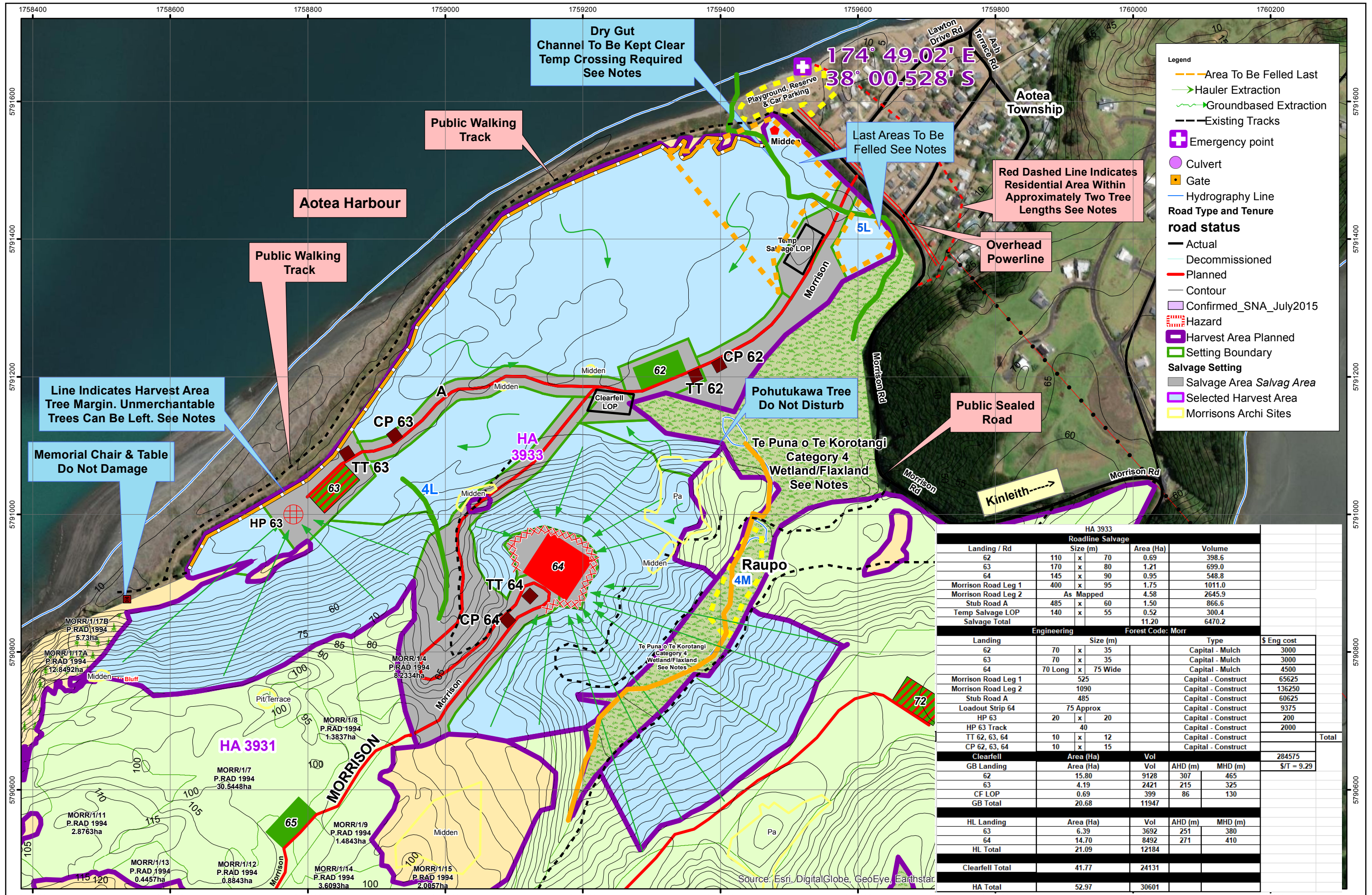
Morrison Rd - MORR - Cmnt 1

0 50 100 200 300 400 500 Metres

Stream Classification

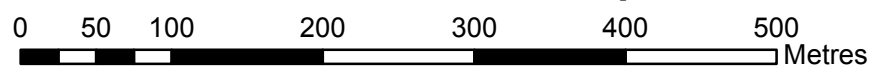
- No disturbance area
- Controlled disturbance/activities. See environmental notes
- Minimal disturbance/activities associated with stream (side) management

Source: Esri, DigitalGlobe, GeoEye, Earthstar Geographics, CNES/Airbus DS, USDA, USGS, AeroGRID, IGN, and the GIS User Community



Operational Map HA 3933 - Draft

Morrison Rd - MORR - Cmnt 1



Roadline Salvage				
Landing / Rd	Size (m)	Area (Ha)	Volume	
62	110 x 70	0.69	398.6	
63	170 x 80	1.21	699.0	
64	145 x 90	0.95	548.8	
Morrison Road Leg 1	400 x 95	1.75	1011.0	
Morrison Road Leg 2	As Mapped	4.58	2645.9	
Stub Road A	485 x 60	1.50	866.6	
Temp Salvage LOP	140 x 55	0.52	300.4	
Salvage Total		11.20	6470.2	

Engineering					Forest Code: Morr	
Landing	Size (m)	Type		\$ Eng cost		
62	70 x 35	Capital - Mulch		3000		
63	70 x 35	Capital - Mulch		3000		
64	70 Long x 75 Wide	Capital - Mulch		4500		
Morrison Road Leg 1	525	Capital - Construct		65625		
Morrison Road Leg 2	1090	Capital - Construct		136250		
Stub Road A	485	Capital - Construct		60625		
Loadout Strip 64	75 Approx	Capital - Construct		9375		
HP 63	20 x 20	Capital - Construct		200		
HP 63 Track	40	Capital - Construct		2000		
TT 62, 63, 64	10 x 12	Capital - Construct				
CP 62, 63, 64	10 x 15	Capital - Construct				
Total				284575		

Clearfell				
GB Landing	Area (Ha)	Vol	AHD (m)	MHD (m)
62	15.80	9128	307	465
63	4.19	2421	215	325
CF LOP	0.69	399	86	130
GB Total	20.68	11947		

HL Landing				
	Area (Ha)	Vol	AHD (m)	MHD (m)
63	6.39	3692	251	380
64	14.70	8492	271	410
HL Total	21.09	12184		

Clearfell Total				
	Area (Ha)	Vol	AHD (m)	MHD (m)
Clearfell Total	41.77	24131		

HA Total				
	Area (Ha)	Vol	AHD (m)	MHD (m)
HA Total	52.97	30601		