



TE KAUNIHERA Ā-ROHE O
ŌTOROHANGA
DISTRICT COUNCIL

Open Agenda

Kāwhia Community Board

3 July 2025

Kāwhia Community Board

Notice is hereby given that an ordinary meeting of the Kāwhia Community Board will be held in the Kāwhia Community Hall, 141 Jervois Street, Kāwhia on Thursday, 3 July 2025 commencing at 4.00pm.

Tanya Winter, Chief Executive

27 June 2025

OPEN TO THE PUBLIC AGENDA

Kāwhia Community Board membership

Chairperson	Geoff Good
Deputy Chairperson	Hinga Whiu
Ōtorohanga District Councillor	Kit Jeffries
Board Member	Richard Harpur
Board Member	Dave Walsh

All attendees at this meeting are advised that the meeting will be electronically recorded (audio and video) for the purpose of webcasting to the Council's YouTube channel. Every care will be taken to maintain individuals' privacy however attendees are advised they may be recorded as part of the general meeting proceedings.

Public forum

The purpose of the forum is to provide an opportunity at the start of all ordinary public meetings of the Boards, for members of the community to come along and speak to their elected representatives. This reflects the Board's desire to see more public participation in decision making and meeting procedures.

To speak at the Public Forum please use the [online form](#) on our website. Each speaker will be allocated a maximum of 5 minutes speaking time.

Role of the Community Board

The Kāwhia Community Board (the Board) is a separate entity to Ōtorohanga District Council. The role of a community board is set out in Section 52 of the Local Government Act 2002 and is summarised below.

1. Represent, and act as an advocate for, the interests of the Kāwhia and Aotea community.
2. Consider and report on all matters referred to it by the Council, or any matter of interest or concern to the Board.
3. Maintain an overview of services provided by the Council within the Kāwhia and Aotea community.
4. Prepare an annual submission to the Council for expenditure within the community.
5. Communicate with community organisations and special interest groups within the Kāwhia and Aotea community.
6. Undertake any other responsibilities that are delegated to it by the Council.

Delegations by Ōtorohanga District Council

The Council is authorised to delegate powers to the Board and has made the following specific delegations to be exercised in accordance with Council policy.

Power to act – Reserve Funds

Full decision-making authority on the use of the Kāwhia Reserve Funds in accordance with the Terms of Reference.

Power to act - Discretionary Fund

Full decision-making authority on the use of the Board's discretionary fund in accordance with the Terms of Reference for the Fund.

Power to recommend – Long Term Plan/Annual Plan/Policy issues

Authority to make a submission to the Long Term Plan/Annual Plan process on activities, service levels and expenditure (including capital works priorities) with the Board's area or to make a submission in relation to any policy matter which may have an effect with the Board's area.

Power to recommend – Advocacy/Submission to other agencies

Authority to recommend to the Council on inclusions to submissions/advocacy to external organisations.

Opening formalities

Commencement of meeting	Te fīmatanga o te hui	6
Opening prayer/reflection/words of wisdom	Karakia/huitao/whakataukī	6
Apologies	Ngā hōnea	6
Public forum	Hui tūmatanui	6
Late items	Ngā take tōmuri	7
Declaration of conflict of interest	Te whakapuakanga pānga taharua	7
Confirmation of minutes	Te whakaū i ngā meneti	8

Decision reports**Ngā pūrongo whakatau**

Item 37	Proposed Aotea and Kāwhia Plan (Better Places Together)	19
---------	---	----

Information only reports**Ngā pūrongo mōhiohio anake**

There are no reports.

Public excluded**Take matatapu**

There are no reports.

Other business**Ētahi atu take**

Board Member updates	115
Board projects	115

Community Board discretionary fund	115
Resolution Register	116

Closing formalities

Closing prayer/reflection/words of wisdom	Karakia/huritao/whakataukī	118
Meeting closure	Katinga o te hui	118

Workshops/briefings

Monthly discussion on items raised in public forum or outstanding matters.	Open
--	------

Please note: The reports attached to this Open Agenda set out recommendations and suggested resolutions only. Those recommendations and suggested resolutions DO NOT represent Ōtorohanga District Council views or policy until such time that they might be adopted by ŌDC resolution. This Open Agenda may be subject to amendment by the addition or withdrawal of items contained therein or the taking of items in another order.

This Open Agenda was prepared by Manager Governance, Kaia King and approved for distribution by Group Manager Regulatory & Growth, Tony Quickfall on 27 June 2025.

Commencement of meeting**Te tīmatanga o te hui**

The Chairperson will confirm the livestream to YouTube is active then declare the meeting open.

Opening prayer/reflection/words of wisdom**Karakia/huitao/whakataukī**

The Chairperson will invite a member to provide opening words and/or prayer/karakia. Refer to the last page for a karakia in both English and Maori.

Apologies**Ngā hōnea**

A Member who does not have leave of absence may tender an apology should they be absent from all or part of a meeting. The meeting may accept or decline any apologies. For clarification, the acceptance of a Member's apology constitutes a grant of 'leave of absence' for that specific meeting(s).

Should an apology be received the following resolution is recommended: *That Kāwhia Community Board receive and accept the apology from ... for ... (non-attendance, late arrival, early departure).*

Public forum**Hui tūmatanui**

Public forums are designed to enable members of the public to bring matters, not necessarily on the meeting's agenda, to the attention of Council. Requests to attend the public forum must be made to on the form available on Council's website: otodc.govt.nz/about-council/meetings/speak-at-public-forum. Alternatively, please call 07 873 4000.

Speakers can speak for up to five (5) minutes. No more than two speakers can speak on behalf of an organisation during a public forum. At the conclusion of the presentation, elected members may ask questions of speakers. Questions are to be confined to obtaining information or clarification on matters raised by a speaker. Following the public forum, no debated or decisions will be made during the meeting on issues raised in the forum unless related to items already on the agenda.

Jacqueline on behalf of the Te Taiao o Kāwhia Moana Society Incorporated has requested to be heard on a petition which will be presented to Ōtorohanga District Council on 29 July.

Late items**Ngā take tōmuri**

Items not on the agenda for the meeting require a resolution under section 46A of the Local Government Official Information and Meetings Act 1987 stating the reasons why the item was not on the agenda and why it cannot be dealt with at a subsequent meeting on the basis of a full agenda item. It is important to note that late items can only be dealt with when special circumstances exist and not as a means of avoiding or frustrating the requirements in the Act relating to notice, agendas, agenda format and content.

Should a late item be raised, the following recommendation is made: *That Kāwhia Community Board accept the late item due to to be heard*

Declaration of conflict of interest**Te whakapuakanga pānga taharua**

Members are reminded to stand aside from decision making when a conflict arises between their role as an elected member and any private or external interest they may have.

A conflict can exist where:

- The interest or relationship means you are biased; and/or
- Someone looking in from the outside could have reasonable grounds to think you might be biased.

Should any conflicts be declared, the following recommendation is made: *That Kāwhia Community Board receive the declaration of a conflict of interest from for item ... and direct the conflict to be recorded in Ōtorohanga District Council's Conflicts of Interest Register.*

Confirmation of minutes**Te whakaū i ngā meneti**

The unconfirmed Minutes of the previous meeting is attached on the following page.

Staff recommendation

That Kāwhia Community Board confirm as a true and correct record of the meeting, the open Minutes of the meeting held on 5 June 2025 (document number 827718).



TE KAUNIHERA Ā-ROHE O
ŌTOROHANGA
DISTRICT COUNCIL

Open Minutes

Kāwhia Community Board

5 June 2025

Kāwhia Community Board

Open Minutes of an ordinary meeting of the Kāwhia Community Board held in the Kāwhia Community Hall, 141 Jervois Street, Kāwhia on Thursday, 5 June 2025 commencing at 4.00pm.

Tanya Winter, Chief Executive

10 June 2025

Kāwhia Community Board attendance

Chairperson	Geoff Good	Attended
Deputy Chairperson	Hinga Whiu	Attended
Ōtorohanga District Councillor	Kit Jeffries	Attended
Board Member	Richard Harpur	Attended
Board Member	Dave Walsh	Apology

Senior staff in attendance

Chief Executive	Tanya Winter	Apology
Group Manager Business Enablement	Graham Bunn	Attended via Zoom
Group Manager Engineering & Assets	Mark Lewis	Attended workshops via Zoom
Group Manager Regulatory & Growth	Tony Quickfall	Attended
Group Manager Strategy & Community	Nardia Gower	Apology
Chief Advisor	Ross McNeil	Apology

These Open Minutes were prepared by Manager Governance, Kaia King and approved for distribution by Group Manager Regulatory & Growth, Tony Quickfall on 10 June 2025.

Opening formalities

Commencement of meeting	Te tīmatanga o te hui	5
Opening prayer/reflection/words of wisdom	Karakia/huitao/whakataukī	5
Apologies	Ngā hōnea	5
Public forum	Hui tūmatanui	5
Late items	Ngā take tōmuri	5
Declaration of conflict of interest	Te whakapuakanga pānga taharua	5
Confirmation of minutes	Te whakaū i ngā meneti	6

Decision reports**Ngā pūrongo whakataū**

Item 35	Kāwhia Community Centre hire charges for 2025/26	6
Item 36	Kāwhia Community Board Discretionary Fund	7

Information only reports**Ngā pūrongo mōhiohio anake**

There were no reports.

Public excluded**Take matatapu**

There were no reports.

Other business**Ētahi atu take**

Board Member updates	8
----------------------	---

Board projects	8
Community Board discretionary fund	9
Resolution Register	9

Closing formalities

Closing prayer/reflection/words of wisdom	Karakia/huritao/whakataukī	9
Meeting closure	Katinga o te hui	9

Workshops/briefings

CCTV cameras at Kāwhia	Open
Signage policies	Open
Better Places, Together	Open
Standing orders	Open

Commencement of meeting**Te tīmatanga o te hui**

Chairperson Good declared the meeting open at 4.05pm.

Opening prayer/reflection/words of wisdom**Karakia/huitao/whakataukī**

Deputy Chairperson Whiu provided the opening karakia.

Apologies**Ngā hōnea**

Resolved K113: That Kāwhia Community Board receive and accept the apology from Board Member Walsh for non-attendance.

Chairperson Good | Board Member Harpur

Public forum**Hui tūmatanui**

No speakers had requested to be heard.

Late items**Ngā take tōmuri**

There were no late items.

Declaration of conflict of interest**Te whakapuakanga pānga taharua**

There were no Declarations made.

Confirmation of minutes**Te whakaū i ngā meneti**

Resolved K114: That Kāwhia Community Board confirm as a true and correct record of the meeting, the open Minutes of the meeting held on 8 May 2025 (document number 817967).

Chairperson Good | Deputy Chairperson Whiu

Decision reports**Ngā pūrongo whakatau****Item 35 - Kāwhia Community Centre hire charges for 2025/26**

ŌDC's Graham Bunn noted the KCB rescinded the previous resolution recommending ŌDC adopt the fees and charges for the Kāwhia Community Centre. Staff looked at the Board's concerns around regular users and have provided the report and staff recommendation for consideration.

Board Member Harpur sought an accountability mechanism such as quarterly reporting from any community group that had been granted an exemption from the Fees and Charges. Deputy Chairperson Whiu spoke in support of ensuring accountability. Councillor Jeffries commented on the \$200 bond for community groups and whether it should be mandatory for exempted community groups. Board Member Harpur noted it may be hard for those groups to cover the \$200 bond. Chairperson Good spoke on the importance of the Board ensuring that the groups were using the Community Centre for the exempted purpose by maintaining a level of oversight.

Resolved K115: That the Kāwhia Community Board:

- a) Approve in principle that Kāwhia Community Centre hire charges be waived for some non-profit community groups who are regular users, noting the Board does not currently have the delegation to waive any fees.
- b) Recommend to Ōtorohanga District Council that delegation be granted to the Kāwhia Community Board to waive Kāwhia Community Centre hire charges for some non-profit community groups who are regular users with significant benefit to the Kāwhia community, at the Board's discretion.
- c) Recommend to Ōtorohanga District Council that the Kāwhia Community Hall hire charges be waived for the following non-profit community groups:
 - i) **Operation Kai 4 All** – weekly hire of the Board/Supper Room (and kitchen) for the purpose of free food distribution services for those in need (volunteer run); and,

- ii) **Kāwhia Hauora Club** – hire of the main hall area at six sessions per week for the purposes of fitness group sessions for the local community (volunteer run); and,
 - iii) **Strength training exercise class** – weekly hire of the main hall area for the purposes of assisting those with mobility issues and fall prevention (volunteer run).
- d) Recommend to Ōtorohanga District Council that the following Kāwhia Community Centre Fees and Charges be included in the 25/26 Annual Plan.

Kāwhia Community Centre	Private/Commercial Group	Non-Profit Community Group
Half Day (up to 4 hours) Entire facility	\$75.00	\$35.00
Full Day (over 4 hours) Entire facility	\$150.00	\$75.00
Board/Supper Room only (Kāwhia Hall)	\$20.00	\$20.00
Bond	\$200.00	\$200.00

Board Member Harpur | Deputy Chairperson Whiu

Item 36 - Kāwhia Community Board Discretionary Fund

ŌDC's Graham Bunn outlined the staff report noting Ōtorohanga District Council do not generally carry over operational budgets. He noted the recommendation sought to ensure the Board do not have to spend to meet an arbitrary deadline to spend the available Fund. Mr Bunn spoke on the intent of the Fund was to ensure funds were available for the Board to spend on any purpose that benefits the Kāwhia and Aotea community.

Councillor Jeffries queried the carry over process and Mr Bunn advised ŌDC would approve carryovers in September so no outcome would be known until that decision was made.

Resolved K116: That the Kāwhia Community Board recommend to Ōtorohanga District Council that any balance left in the Kāwhia Community Board Discretionary fund as at 30 June 2025 be carried over to the following financial year and be included in the carryover schedule for adoption by Council in September.

Councillor Jeffries | Deputy Chairperson Whiu

Information only reports**Ngā pūrongo mōhiohio anake**

There were no reports.

Public excluded**Take matatapu**

There were no reports.

Board Member updates**Ngā kōrero hou a ngā Kaikaunihera**

Board Member Harpur spoke on his visit to the Beattie Home open day in Ōtorohanga and noted they were the third biggest employer in the Ōtorohanga district. He referenced a meeting he attended with the Kāwhia Oyster Farm and ŌDC's Tony Quickfall to advise on regulatory matters. He attended the Forestry meeting and the Kaumatua group.

Councillor Jeffries had a discussion with local Terry Johnston on the CCTV cameras at Kāwhia and attended the ŌDC workshop and meeting days. He also attended the Aotea Ratepayers Society annual general meeting.

Deputy Chairperson Whiu spoke on the upcoming Matariki Kaumatua Ball.

Chairperson Good attended the Aotea Ratepayers Society annual general meeting and the ŌDC workshop day.

Board projects**Project 1: Kāwhia Storyboards**

Deputy Chairperson Whiu stated the project was a work in progress with consideration being given to QR codes being included to limit the information on the signs but allows for further information to be available.

Community Board discretionary fund

No Funds were allocated.

Resolution Register

Resolved K117: That the Kāwhia Community Board approve:

- a) Parts b) and c) from the Resolution on 26/2/21 be removed from the Register.
- b) Resolution K99 be removed from the Register as it has been rescinded by Board Resolution K108; and,
- c) Resolution K100 to be rescinded and removed from the Register as it is no longer required; and,
- d) Resolution K108 be removed from the Register.

Board Member Harpur | Councillor Jeffries

Closing prayer/reflection/words of wisdom**Karakia/huritao/whakataukī**

Deputy Chairperson Whiu led the Board in a recitation of the karakia provided in the agenda, first in Te Reo and secondly in English.

Meeting closure**Katinga o te hui**

Chairperson Good declared the meeting closed at 4.46pm.

Workshops/briefings

Refer to page 4 for a list of workshops and briefings held.

The meeting day ended at 6.31pm.

Decision reports**Ngā pūrongo whakatau**

DISCLAIMER: The reports attached to this Open Agenda set out recommendations and suggested resolutions only. Those recommendations and suggested resolutions DO NOT represent Ōtorohanga District Council policy until such time as they might be adopted by formal resolution. This Open Agenda may be subject to amendment either by the addition or withdrawal of items contained therein.

**Item 37 Proposed Aotea and Kāwhia Plan
(Better Places Together)**

To Kāwhia Community Board
From Sahndra Cave, Community Projects Lead
Type **DECISION REPORT**
Date 3 July 2025



1. Purpose | Te kaupapa

- 1.1. To endorse the proposed Aotea and Kāwhia Plan (Better Places Together) and recommend it be adopted by Ōtorohanga District Council (ŌDC).

2. Executive summary | Whakarāpopoto matua

- 2.1. This report recommends the adoption of the Aotea & Kāwhia Plan – Better Places Together – (the Plan) attached as Appendix 1. The Plan outlines detailed development proposals covering Omimiti Reserve, Aotea Beach Reserve, the Kāwhia Urban Design Plan, and the Jervois Streetscape Upgrade.
- 2.2. The Plan is the result of comprehensive engagement with mana whenua, community members and key stakeholders, including open days, hui, surveys, and workshops. It reflects strong local support and incorporates cultural values, community aspirations, and site-specific opportunities. Option 1—to adopt the Plan—is recommended, as it will enhance the identity, functionality, and cultural significance of Kāwhia and Aotea, and deliver meaningful outcomes aligned with community and mana whenua priorities.
- 2.3. Not all aspects of these projects can be completed at once, so the plan represents a 5-10-year horizon for implementation, with its delivery subject to available funding/resourcing. Securing external funding (i.e. not rate funding) provides greater certainty that projects can be completed and some community groups have offered assistance. To support the Plan’s recommended adoption by ŌDC, the Board’s guidance on priorities is sought.

3. Staff recommendation | Tūtohutanga a ngā kaimahi

That the Kāwhia Community Board endorses the proposed draft Aotea & Kāwhia Plan, noting any further changes to be made, and recommends that the Plan be adopted by the Ōtorohanga District Council.

4. Context | Horopaki

- 4.1. The Kāwhia/Aotea/Ōpārau Concept Plan (adopted June 2024) identified several key projects that had arisen from engagement with the community, mana whenua and stakeholders – these being developing reserve concept plans for Omimiti Reserve, Aotea Beach Reserve, an Urban Design Plan for Kāwhia and Jervois Streetscape Upgrade. These four projects are collectively known as “Better Places Together”.
- 4.2. Ōtorohanga District Council (ŌDC) engaged Resilio Studio, in collaboration with local Kāwhia landscape architects, to deliver this project.
- 4.3. Several engagements were held including two public open days held on 3 May 2025 and 7 June 2025, two mana whenua hui with Ngāti Hikairo and Ngāti Te Wehi, meetings with stakeholders including the Fitness Trail Group, Aotea Ratepayers Society, Aotea Residents who live adjacent to Aotea Beach Reserve, Charter Boat Operators, Kāwhia Museum, a youth engagement at Kāwhia School and two hui with the Thorne whānau, owners of a block of land in Omimiti Reserve (Kāwhia Z Block).
- 4.4. In addition, two online surveys were conducted to gather community feedback.
- 4.5. A working group was established for the project, made up of project team members together with elected representatives who are local to Aotea and Kāwhia. This group actively contributed local knowledge, provided feedback throughout the process, and supported the development of the plans.

5. Discussion | He kōrerorero

- 5.1. The proposed Aotea & Kāwhia Plan (Better Places Together) represents a well-supported and collaboratively developed vision for the enhancement of key public spaces in Kāwhia and Aotea. It builds on the priorities identified in the Kāwhia/Aotea/Ōpārau Concept Plan and translates them into practical, place-based proposals shaped by community and mana whenua aspirations.

- 5.2. Staff and the project team are confident that the plan provides a meaningful and achievable framework for future improvements. While implementation will be dependent on funding and staged delivery, the plan positions ŌDC, KCB and the community to actively pursue external funding and local partnerships. In light of expected costs and challenges securing funding, the Board's direction is sought as to relative priorities within the proposed plan.
- 5.3. Endorsing the Plan at this stage provides a clear mandate to proceed to adoption by ŌDC, enabling the Plan's implementation to begin. Delaying endorsement would risk losing project momentum and the goodwill established through community engagement.

6. Considerations | Ngā whai whakaarotanga

Significance and engagement

- 6.1. The projects forming the proposed Plan are significant, which is why an extensive engagement process has been followed. While not unanimous, the proposed Plan reflects the general views within the community.

Impacts on Māori

- 6.2. ŌDC's commitment to develop stronger relationships and partnerships with iwi/mana whenua is well established and was inherent in the development of the draft Aotea and Kāwhia Plan. Mana whenua were involved from the outset of this project. This has helped ensure desired outcomes are recognised and any adverse impacts or matters of significance are identified early and appropriately managed.

Risk analysis

- 6.3. The project area is located within a coastal environment that may be subject to coastal inundation due to sea level rise, storm surges, or extreme weather events. This presents a range of risks, including damage to infrastructure, increased maintenance costs, and potential disruption to public access and use.
- 6.4. To manage these risks, the project has been assessed against current coastal hazard mapping and climate change projections.
- 6.5. Design responses will prioritise adaptive, low-impact development that can be relocated, modified, or decommissioned over time if conditions change.
- 6.6. Ongoing monitoring and engagement with coastal scientists, mana whenua, and the community will also inform long-term resilience planning. The project will remain responsive to emerging data

and national direction, ensuring alignment with the principles of risk avoidance and managed retreat where appropriate.

- 6.7. The delivery of projects specified in the Plan is reliant on resourcing, particularly funding. While ŌDC has some funding to support Concept Plan implementation, it cannot be assumed that all projects will automatically be funded by ŌDC. Realistically, the Plan reflects a 10-year programme and will be managed as resourcing is available. Some groups within the community have signalled a desire to provide support in helping deliver key projects.
- 6.8. Kāwhia Z Block is a small privately owned parcel located within the Omimiti Reserve, for which ŌDC has no automatic jurisdiction. The owners recognise the customary use of their whenua as community accessible open space. In acknowledgment of that position, no structures or other assets are proposed on or over that whenua.

Policy and plans

- 6.9. Omimiti Reserve and Aotea Beach Reserve are designated as reserves under the Reserves Act 1977 and are managed by ŌDC. This plan aligns with the requirements and intent of the Act.
- 6.10. Better Places Together includes four projects that were directly identified through the Kāwhia/Aotea/Ōpārau Concept Plan process. These projects emerged from extensive community engagement and were identified within the plan's implementation framework

Legal

- 6.11. This decision has no specific legal implications. The previous "no man's" status of the foreshore area containing the skatepark appears to have been finalised by way of a recent Gazette Notice. On that basis ŌDC could continue to administer the area for community benefit.

Financial

- 6.12. Funding for Concept Plan projects is partially provided through a dedicated budget in ŌDC's Long-Term Plan, which is intended to contribute to the delivery of initiatives identified in the district's three Concept Plans.
- 6.13. However, this budget will not cover the full cost of implementation. As such, the majority of project funding is expected to be sourced through external grants, partnerships, or other co-funding opportunities. ŌDC will actively seek these additional funding streams to ensure the successful and cost-effective delivery of projects.
- 6.14. Implementation will follow a staged approach to ensure delivery is prioritised, manageable, and aligned with available funding.

- 6.15. Local community members are also expected to contribute through volunteer labour, in-kind support, and local knowledge, strengthening project outcomes and community ownership.
- 6.16. All expenditure will be managed in accordance with ŌDC's financial and procurement policies.

7. Options analysis

Option 1: Recommend adoption of the Aotea and Kāwhia Plan to Council

- 7.1. The proposed draft Aotea & Kāwhia Plan reflects the identification of constraints and opportunities, technical assessment and analysis, and feedback received throughout the various phases of the project. It is recommended that the Board endorse the draft Plan and recommend its adoption by ŌDC. Subject to the Board's endorsement, the Plan will be presented to ŌDC for adoption in late July 2025.

Option 2: Defer the adoption of the Aotea and Kāwhia Plan

- 7.2. There are no benefits for or compelling reasons to support this option given the Plan's implementation will be managed according to available resourcing.

Recommended option and rationale

- 7.3. The preferred option is Option 1 as it reflects strong community support for the development plans in Kāwhia and Aotea. These plans respond directly to local aspirations and priorities, and their implementation will enhance the character, usability, and cultural value of these places. By moving forward with Option 1, the project will build on the momentum of community engagement and deliver outcomes that are meaningful and beneficial to the people who live in and care for these areas.

8. Appendices | Ngā āpitihanga

Number	Title
1	Proposed Aotea and Kāwhia Plan (Better Places Together)

DRAFT

BETTER PLACES TOGETHER
AOTEA & KĀWHIA PLAN

Revision A | June 2025

DRAFT

Prepared by
 **RESILIOSTUDIO**

In association with
RIVERLAND DESIGN

For



TE KAUNIHERA Ā-ROHE O
ŌTĀHIRA-MĀNGIA
DISTRICT COUNCIL

Aotea & Kāwhia Plan

Document Quality Statement

Report Number:	Revision A
Prepared for	Ōtorohanga District Council
Document Author	Resilio Studio + Riverland Design
Reviewed by	Gary Marshall Director Resilio Studio
Authorised for Issue	Gary Marshall Director Resilio Studio

Document Control

The following person(s) shall receive a copy of this document upon each subsequent release:

Name	Title/Group	Organisation
Ross McNeil	Chief Advisor	Ōtorohanga District Council
Gary Marshall	Director	Resilio Studio

REVISION HISTORY

Version	Publication date
Revision A	June 2025

LIMITATIONS

This report has been prepared exclusively for Ōtorohanga District Council on the basis of the brief received by Resilio Studio. Information, opinions and recommendations contained within it cannot be used by any other entity without the review and written consent of Resilio Studio. Resilio Studio accepts no liability or responsibility whatsoever for the use or reliance upon this report by any unauthorised third party.

Prepared by



Resilio Studio

493 New North Road
Kingsland
Auckland 1021

www.resilio.nz

+64 21 117 5072
+64 21 591 279

info@resilio.nz

CONTENTS

CONTEXT	4
Aotea Beach Reserve	11
Aotea Beach Reserve	20
Kāwhia Town Centre	37
Kāwhia Network	64
Appendix A — Plant Schedules for Kāwhia and Aotea	89

DRAFT

CONTEXT

ŌTOROHANGA DISTRICT



0

5

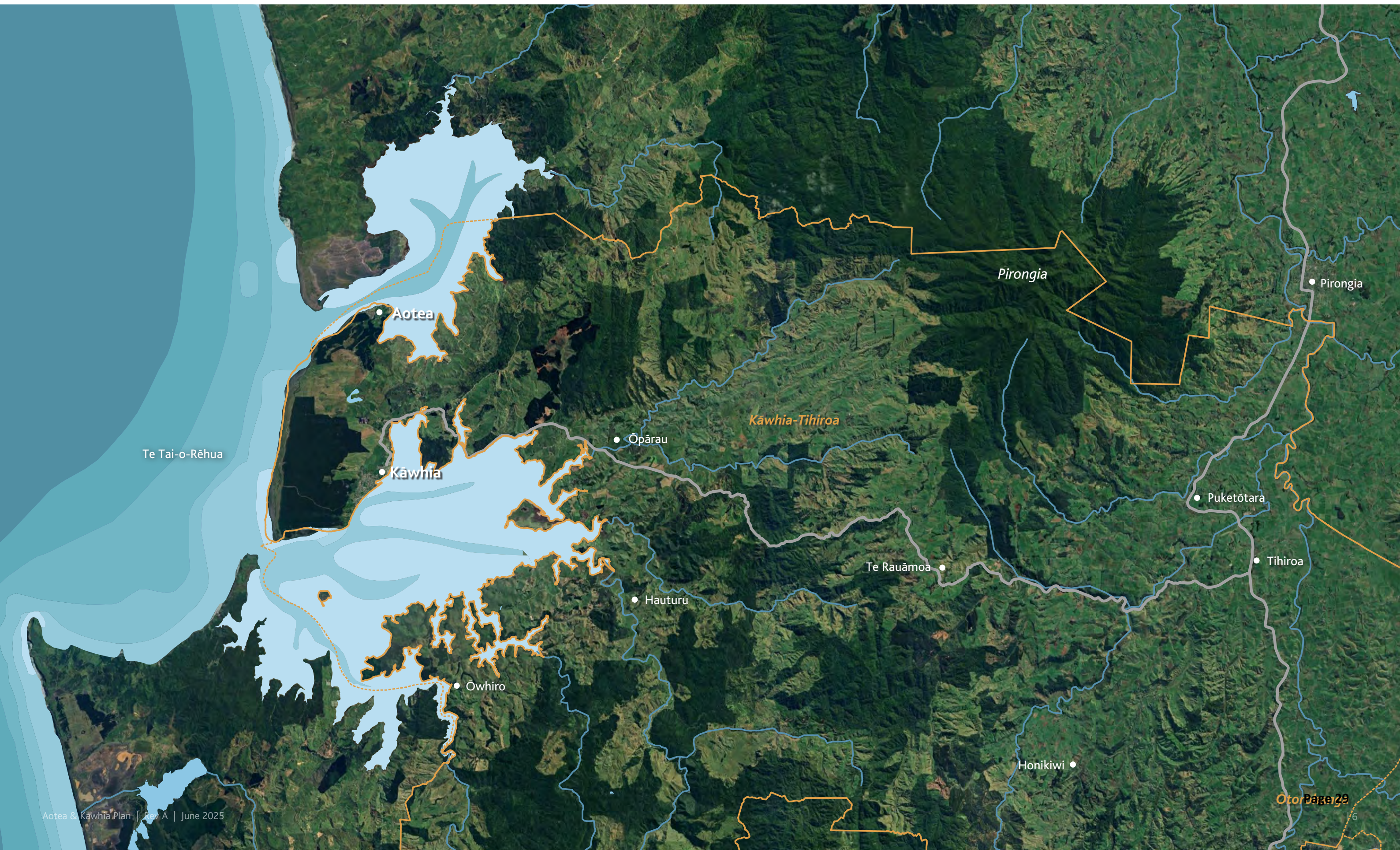
10

25km

DRAFT

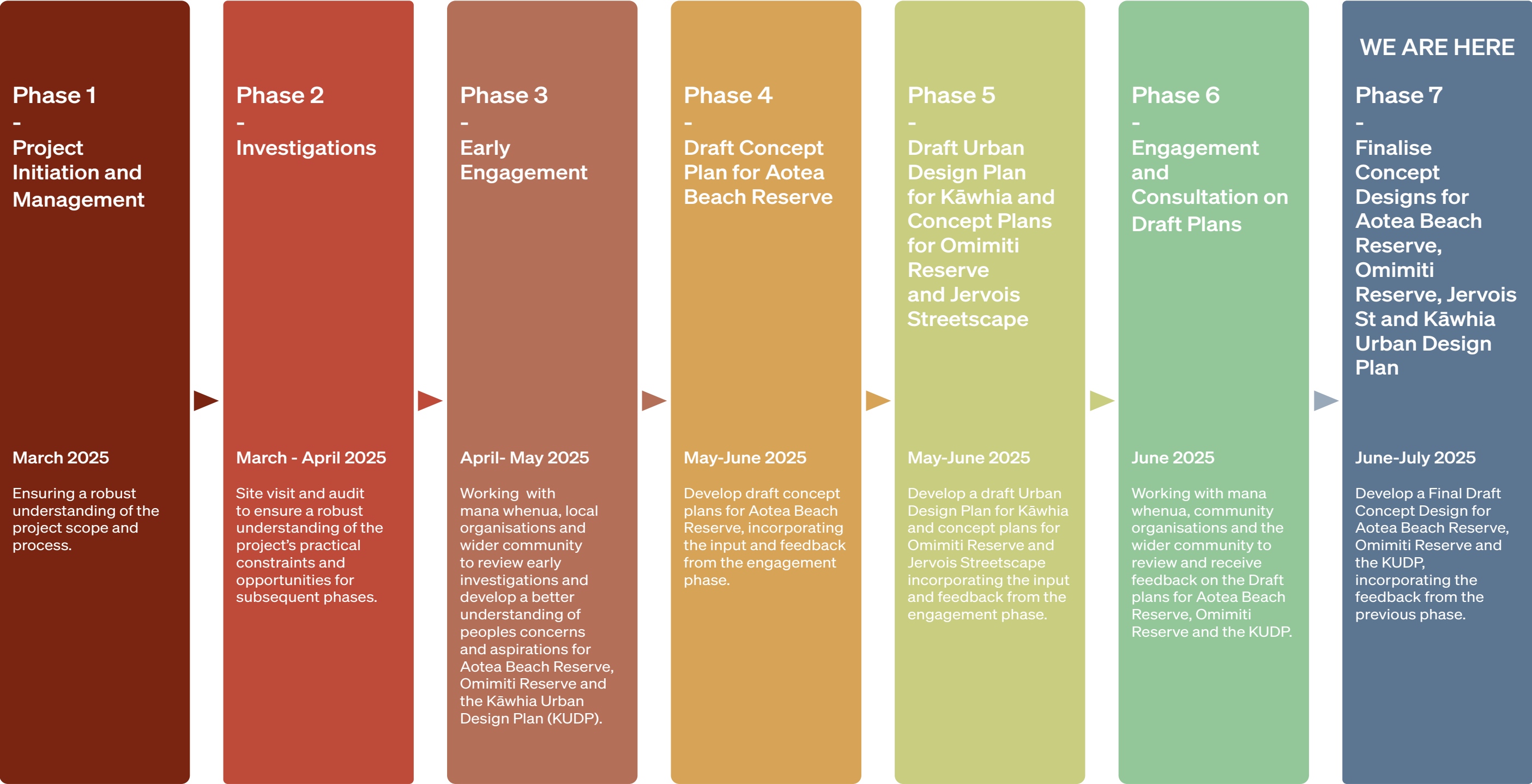


AOTEA AND KĀWHIA CONTEXT



AOTEA AND KĀWHIA





SUMMARY OF ENGAGEMENT

DRAFT

For Better Places Together, Kāwhia and Aotea we have engaged with a range of partners and stakeholders through targeted online and in-person meetings alongside two well attended public open days at the Kāwhia Community Hall on Saturday 3rd May and Saturday 7th of June.

MANA WHENUA (AOTEA) - NGĀTI TE WEHI

The initial online hui was primarily intended to understand Ngāti Te Wehi interests in the area and around the development of Aotea Beach Reserve, key matters raised in this engagement included the following:

- The importance of recognising Ngāti Te Wehi cultural heritage in the area
- The presence of important wāhi tapu and wāhi taonga in the wider Aotea area
- The importance of climate change response and fostering environmental resilience in Aotea
- The upcoming harvest of the Morrison block and the desire of Ngāti Te Wehi to regenerate this area with native coastal dune species in the long term.

For the second Hui, ŌDC met with representatives of Ngāti Te Wehi and Ōkapu Marae. Responding to a set of draft concept plans, James and Tilena expressed Ngāti Te Wehi’s support for the vision, direction and focus of the Aotea Beach Reserve development, highlighting the importance of Ngāti Te Wehi’s deep connections to this environment. Key matters included:

- Strong support for the vision of regenerating the reserve and surrounding ecosystems, with recognition that that this was historically a kai gathering area

- Strong support for the additional recreation and amenity outcomes proposed to bring together whānau and foster community spirit
- Outlining the importance of appropriate waste management and ongoing maintenance of the reserve
- Advocacy for the use of sustainable materials
- Strong support for further partnership with ŌDC to develop interpretive signage to emphasise the long history, rich heritage, traditions and values of Ngāti Te Wehi in the area
- A request for ŌDC to include Ngāti Te Wehi rangatahi in the planting to foster long term connection and a sense of stewardship for the environment for Ngāti Te Wehi Whānau, this may also include a commemorative time capsule to go in at the same time as trees are planted
- A request that Ōkapu Marae and Ngāti Te Wehi lead the formal blessing and karakia when the reserve re-opens

AOTEA COMMUNITY

ŌDC engaged with the Aotea community through a series of in-person meetings, and public open days. This included:

- Two in-person meetings with the Aotea Ratepayer Association
- One in-person meeting with Aotea residents with a direct relationship to the reserve.

Generally the feedback centered around the Aotea Beach Reserve being a well used and whānau focussed reserve used for a range of gathering and drawing people from the local community and further afield as a safe swimming spot. Locals are happy with the low-key unspoiled character of the reserve and would like to retain this. Through the engagement process there was a range of opinions that emerged around the future development of Aotea Beach Reserve.

There was a general agreement on the following actions for the reserve:

- Planting a native shelterbelt along the road edge to protect the reserve and surrounding area from prevailing winds when the Morrison block is harvested
- Upgrading the existing toilets
- Maintaining and enhancing access to the sea
- Upgrades to the parking area to reduce anti-social behaviour
- Keeping the existing open character and views to Aotea Moana

The following actions were viewed as highly desirable for some community members, and less desirable to others:

- Providing shade, either through a formalised structure or providing more trees and interim structures like a shade sail
- BBQ facilities
- A multi-use half-court

MANA WHENUA – TE RŪNANGANUI O NGĀTI HIKAIRO

This initial hui was primarily intended to understand Te Runanga o Te Rūnanganui o Ngāti Hikairo interests in the Kāwhia network area and discuss the work undertaken to date. Key matters raised in this engagement included the following:

- Protecting and where appropriate highlighting and celebrating cultural heritage sites across Kāwhia for Te Rūnanganui o Ngāti Hikairo
- The importance of Kāwhia as an area for Māori tourism
- Protecting the health of water systems of Kāwhia, particularly fragile sand aquifers
- Coastal inundation, particularly as it relates to the salination of groundwater
- The importance of ecological regeneration and incorporating endemic plants of significance to Te Rūnanganui o Ngāti Hikairo
- Te Rūnanganui o Ngāti Hikairo would like to see pou and kōwhatu developed with mana whenua artists to be incorporated as part of the Kāwhia network to signify sites of importance
- The importance of regenerating the ecosystems within Pouewe Bay
- Highlighting the cultural connection of Te Rūnanganui o Ngāti Hikairo to Kāwhia town centre area
- Ensuring reserve development includes open space for whānau to meet and gather and consolidates existing furniture and facilities to highlight the open space

SUMMARY OF ENGAGEMENT CONT.

DRAFT

- Protecting and highlighting Z block* within Omimiti Reserve as a part of the cultural heritage of the area

During engagement for Omimiti Reserve, As part of signage work being undertaken by the local board, cultural advisor and landowner Frank Thorne identified a range of cultural heritage sites, along with a list of culturally significant plants. This information was translated into the plan through a series of high level draft maps, ŌDC understands that this information will be taken back to Te Rūnanganui o Ngāti Hikairo Kaumātua. These maps will remain draft until further engagement is undertaken.

Following this, ŌDC also recognises the need for wider engagement with Te Rūnanga o Ngāti Mahuta ki Te Hauāuru, Māketu Marae and Waipapa Marae to progress cultural heritage mapping and understand their interests, aspirations and concerns.

KĀWHIA COMMUNITY AND STAKEHOLDERS

ŌDC engaged with the Kāwhia community through a series of targeted in-person meetings, workshops and the two public open days. This included:

- One engagement with Kāwhia School
- One meeting with Kāwhia Museum
- One in-person meeting with the Charter Boat Operators
- One in-person meeting with Fitness Trail

Through this engagement process there was a range of themes that emerged about the future

*Z Block is a Māori land block in Omimiti Reserve owned by the Thorne Whanau

development of the Kāwhia network including the following:

- The cultural heritage and history of Kāwhia is important to highlight and celebrate
- Maintaining the low-key character of Kāwhia is important, any changes should be modest and in keeping with the town character
- Support for better connections for walking and cycling across Kāwhia
- Support for a fitness trail and container gym
- The importance of the protection of the local environment including trees and other ecological regeneration
- Ensuring the provision of appropriate parking that balances the needs of locals, visitors and charter boat customers

The following feedback about the town centre, including Omimiti Reserve and Jervis Street was received

- Support for highlighting and protecting existing character including open space, trees, connection to Pouewe Bay and the pou bollards
- Support for maintaining and enhancing whānau friendly facilities like the BBQ, shelter and playground
- Consolidating furniture to maximise open space
- Support for celebrating cultural heritage and histories
- Support for opening up the Community Hall to the reserve to create a more usable and multi-functional open space
- Support for reallocating parking behind the hall to provide more open space, connect the reserve and provide dedicated space for food trucks, coffee carts and events
- Reinforcing the relationship between the reserve and the beach.



DRAFT

AOTEA BEACH RESERVE

AOTEA HARBOUR



AOTEA COMMUNITY



AOTEA BEACH RESERVE: AERIAL



AOTEA BEACH RESERVE: PREVAILING WEATHER CONDITIONS



AOTEA BEACH RESERVE: SITE PLAN

Scale 1:750 @A3



0 10 20 60m

DRAFT



KEY

ASSETS

- Info Board
- Picnic Table
- Bench/Seat
- Playground
- Rubbish Bin
- Public Toilet
- Water Tank
- Steps / Beach Access
- Drain/Culvert
- Parking

SURFACES

- Grass
- Sand
- Vegetation
- Asphalt Road
- Gravel Road
- Sand Road
- Sea Wall
- Canopy
- Building Footprint

FENCING

- Gate
- Removable Bollard
- Timber Bollards
- Rock Bollards
- Wire Fence

AOTEA BEACH PHOTO ESSAY

DRAFT



AOTEA BEACH RESERVE: CONCEPT DESIGN

CONCEPT DESIGN: NOT FOR CONSTRUCTION



Key

ACCESS AND CIRCULATION

- 1 Formalised car park
- 2 Traffic calming
- 3 Enhanced beach access
- Wheel Stops
- Removable bollards to maintain access to the seawall for maintenance and repair

PLAYGROUND AND BBQ AREA

- 4 New shade structure
- 5 New BBQ
- 6 Upgrade and consolidate furniture
- 7 New multi-sport half court
- 8 Low retaining wall / bench seat
- Existing play facilities
- Furniture and seating

PUBLIC TOILET

- 9 Upgraded toilet

SIGNAGE

- 10 Interpretive signage celebrating Ngāti Te Wehi cultural heritage, values and traditions
- Consolidate and upgrade existing signs as part of a Ōtorohanga District-Wide Signage Strategy

PLANTING

- Coastal dune regeneration
- Low coastal amenity planting retaining views
- Shelterbelt planting
- Indicative specimen trees
- Existing trees
- Trees to be removed

AOTEA BEACH RESERVE: KEY DIMENSIONS



ACTION PLAN - AOTEA BEACH RESERVE

1. CARPARK

Redesign and resurface the existing car park with compacted gravel and timber wheel stops to optimise parking within a smaller area and provide more open space.

DESIGN OBJECTIVES

- Clearly define parking spaces.
- Allow space for trailer parking.
- Increase the open space area of the reserve.
- Maintain views of the water.
- Maintain and enhance access to the Aotea walkway.

DESIGN PARAMETERS

Size: 1100m²

Materiality: Compacted gravel

Wheel Stops

Proprietary timber wheel stops positioned on outer car park perimeter

Quantity: 2.5m spacing (centre to centre). Fixing and installation as per suppliers specification.

Bollards

Size: Relocated/Repurposed timber bollards

Quantity: Installed to the outside perimeter of car parking area to deter vehicular entry. 1.5m spacing.

Provision of at least 2-3 removable bollards to allow for maintenance / emergency access.



2. TRAFFIC CALMING

DRAFT

Relocate speed humps from Pouewe and Jervios Street, Kāwhia to Morrison Road, Aotea to slow traffic and improve safety for pedestrians.

DESIGN OBJECTIVES

- Slow vehicles
- Ensure vehicles can not easily drive around
- Visible but not prominent.

DESIGN PARAMETERS

Size: 8(L)m x 3(W)m

Quantity: 1

Materiality: Relocated modular rubber speed table installed to fit width of access road into reserve with a minimum 3m (6 modules) depth.

Installed with new fixings approved by initial supplier which are suitable to road surfacing.



3. BEACH ACCESS

DRAFT

Replace existing stairs to provide improved beach access from Aotea Beach Reserve.

DESIGN OBJECTIVES

- Safe and accessible.
- Durable and low maintenance.
- Visible but not prominent.
- Simple form of natural and recessive colours and materials.

DESIGN PARAMETERS

Size: 6.0(L)m x 2.4(W)m

Quantity: 1

Materiality: H5 treated timber construction with dual sided handrails. Construction to achieve compliance with NZS4121:2001. Stairs to be fitted with griptread or other suitable product to improve traction.



4.SHADE STRUCTURE

DRAFT

Develop a structure adjacent to the existing playground to provide shade and shelter while maintaining the existing seaside character and views to the sea.

- Work with a design build contractor to detail shade structure
- Review by suitably qualified landscape architect
- Implement shade structure

Opportunity: Coordinate a design that is replicable for both Aotea Beach Reserve and Omimiti Reserve

DESIGN OBJECTIVES

- Provides shade and protection from light rain and weather events.
- Prioritise sustainable materials.
- Durable and low maintenance.
- Visible but not prominent.
- Simple form of natural and recessive colours and materials suitable to the coastal context.

DESIGN PARAMETERS

Size: 8(L)m x 5(W)m

Quantity: 1

Materiality: Timber post and beam construction.
Single gable corrugated iron roof.

Non-trafficable concrete pad base with standard basecourse buildup.



5. BBQ

DRAFT

Develop a new BBQ and seating area close to the existing playground.

DESIGN OBJECTIVES

- Durable and low maintenance.
- Easy to use and clean
- Accessible to people using the park without needing to cross roads.
- Visible but not prominent.
- Provide seating and space for food preparation.

DESIGN PARAMETERS

Size: Proprietary Dual Electric Barbeque

Materiality: Selected external panel colouring to blend with natural environment.

DEPENDENCIES

- Water source
- Shade structure
- Power source



6. UPGRADE AND CONSOLIDATE FURNITURE

DRAFT

Upgrade and consolidate the existing furniture in Aotea Reserve

- Consolidate existing furniture together in clusters to create cohesive gathering areas
- Work with local contractor to design and construct new furniture, where necessary that is visually and materially consistent with existing character

DESIGN OBJECTIVES

- Consolidate existing furniture in clusters around the park's edge to maximise the open space area in the centre of the reserve.
- Cohesive aesthetic that reflects Aotea and wider Ōtorohanga rohe.
- Reinforces a sense of identity, sense of pride and belonging.
- Durable and low maintenance.
- Easy to use and clean.
- Visible but not prominent.
- Explore using recycled hardwood timber or other local, durable, low-toxicity materials.



7. HALF COURT

DRAFT

Develop a multi-use half court adjacent to the playground that can be used for a range of sports and activities

Opportunity - Commission a local artist to design and paint court markings.

DESIGN OBJECTIVES

- Paint with line markings for a range of different games and sports.
- Provide seating adjacent to the court.
- Ensure that the area behind the basket is planted to help catch stray balls.
- Durable and low maintenance.

DESIGN PARAMETERS

Size: 14.5m x 7.5m

Quantity: 1

Proprietary basketball hoop with backboard
Standard non-trafficable concrete pad and base
course build up.

Suitable line marking paint with slip resistant
properties.



8. LOW RETAINING WALL AND SEATING

DRAFT

Low Retaining Wall

Develop a long, low retaining wall along the eastern edge of the playground to provide seating and an edge for restoration planting.

Option #1 - Standalone structure

Option #2 - Integrate with shade structure

DESIGN OBJECTIVES

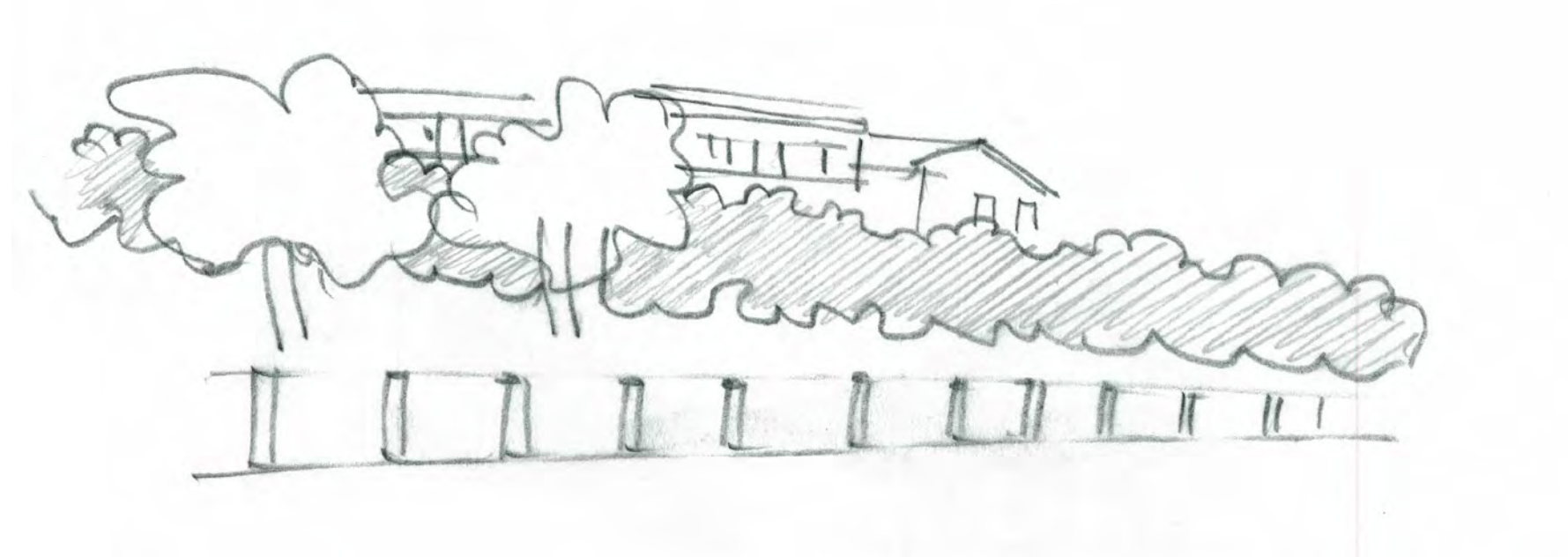
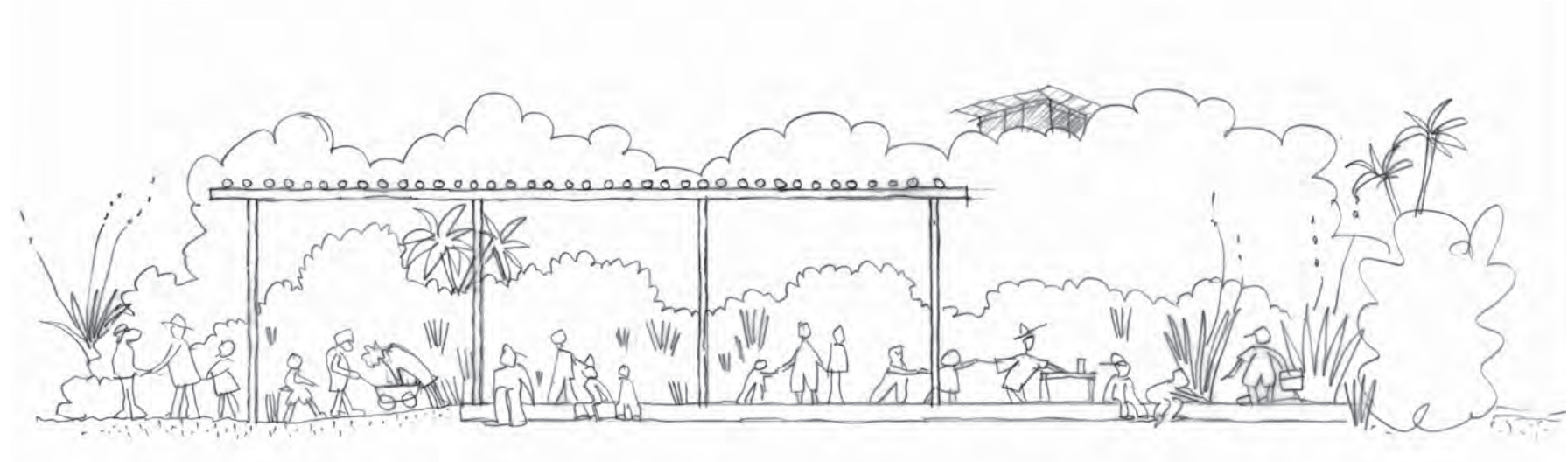
- Durable and low maintenance.
- Allow space for a lawn mower to access the upper platform.
- Explore using recycled hardwood timber or other local, durable, low-toxicity materials.
- Simple form of natural and recessive colours and materials.

DESIGN PARAMETERS

Size: 25m long retaining wall with min 400mm - max 550mm in height.

Quantity: 1

Materiality: Treated timber retaining wall with timber capping to form playground seating with a seated depth of min 400mm.



9. TOILET UPGRADE

DRAFT

Replace the existing toilet with a new, single-cubicle high-performance composting toilet adjacent to the carpark and close to the existing location.

DESIGN OBJECTIVES

- Compost or septic system with low to no smell.
- Durable and low maintenance.
- Accessible to people using the park without needing to cross roads.
- Visible but not prominent.
- Simple form of natural and recessive colours and materials.

DESIGN PARAMETERS

Size: Single Cubicle Toilet Facility -
1900 x 1600mm min to meet accessibility compliance.

Quantity: 1

Materiality: Compostable/septic tank toilet unit.
External cladding material or finish to feature natural or recessive colours - coordinated to match shelter structure.



AOTEA BEACH RESERVE SIGNAGE STRATEGY

DRAFT

Develop a bilingual signage strategy for Aotea as part of the wider Ōtorohanga District Signage Strategy incorporating wayfinding signage, interpretive signage, compliance signage and gateway signage.

Opportunity - Work with Ngāti Te Wehi to develop content for interpretive signage

Opportunity - Create a new 'Haere Mai Welcome to Aotea Moana' sign at the Kāwhia and Aotea Road intersection to welcome and inform road users of the turnoff to Aotea

DESIGN OBJECTIVES

- Cohesive aesthetic that reflects Aotea and wider Ōtorohanga rohe.
- Reinforces a sense of identity, sense of pride and belonging.
- Clear and legible.
- Durable and low maintenance.
- Easy to use and clean.
- Visible but not prominent.
- Reinforces a sense of identity, sense of pride and belonging.
- Friendly and welcoming.
- Provides direction to Aotea.
- Durable and low maintenance.
- Easy to use and clean.
- Visible but not prominent.

DEPENDENCIES

- Part of the wider Ōtorohanga District Signage Strategy
- Engage project partners including Ngāti Te Wehi to confirm wording and design



Interpretive signage



Wayfinding



Road signage



Compliance signage

PLANTING PROGRAMME

Develop, implement and maintain a planting programme for Aotea Reserve that includes coastal dune regeneration, low shelterbelt planting and specimen trees to provide shade and shelter, increase biodiversity, enhance amenity and build resilience.

Work with Ngāti Te Wehi and Ōkapu Marae to support goals of enriching and regenerating the coastal dune ecosystems by getting rangatahi involved in planting Aotea Beach Reserve

See schedules for Blue Green Network in the appendix for further detail

DESIGN OBJECTIVES

- Use plants appropriate to the coastal and ecological context.
- Utilise low-maintenance, robust and resilient species
- Utilise ecosource species where possible.
- Provide shade and shelter, and enhance coastal amenities.
- Enhance biodiversity and build resilience.
- Provide protection from wind speed and turbulence.

- Indicative additional specimen trees
- Coastal dune regeneration
- Low coastal regeneration
- Shelter belt



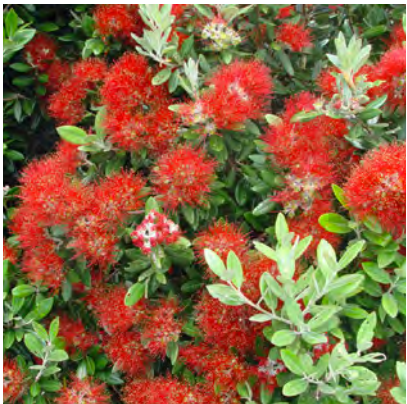
COASTAL DUNE
REGENERATION



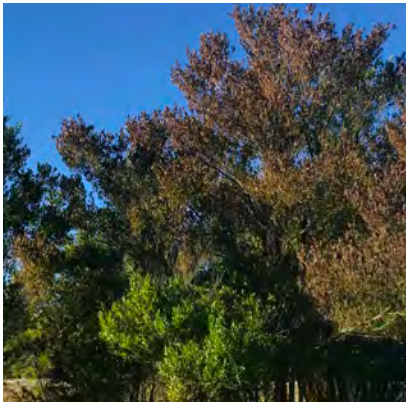
LOW COASTAL
DUNE REGENERATION



SPECIMEN TREES



SHELTER BELT



ACTION PLAN - AOTEA RESERVE UPGRADE

DRAFT

Action / Project	Description of Key Actions	Project Type	Key Phases	Design Objectives	Design Parameters	Dependencies	Project Readiness
Engagement							
Ongoing engagement with Ngāti Te Wehi	Work in partnership with Ngāti Te Wehi to confirm how cultural landscapes and sites of significance can be protected and, where appropriate, highlighted and celebrated.	Engagement	Work with Ngāti Te Wehi create signage, mahi toi or other cultural markers to highlight and where appropriate celebrate cultural narratives and heritage in Aotea Beach	To be determined through engagement.	Funding for engagement	Explore opportunities to celebrate cultural heritage and narratives through various mediums, including but not limited to mahi toi, interpretive signage, planting and ongoing engagement with reserve development	Further engagement required
		Ongoing relationships	Work with Ngāti Te Wehi and Ōkapu Marae to recognise and celebrate their long heritage in Aotea through engaging in the development through planting (see planting programme for more detail), alongside leading the re opening ceremony for Aotea Beach Reserve with customary karakia and formal blessings				
		Opportunity identified by Ngāti Te Wehi - bury a time capsule when planting trees					
Access and Circulation							
Car Park	Redesign and resurface the existing car park with compacted gravel and timber wheel stops to optimise parking within a smaller area and provide more open space.	Built project		<ul style="list-style-type: none">Clearly define parking spaces.Allow space for trailer parking.Increase the open space area of the reserve.Maintain views of the water.Maintain and enhance access to the Aotea walkway.		Size: 1100m2 Materiality: Compacted gravel with consideration of drainage. Wheel Stops Proprietary timber wheel stops positioned on outer car park perimeter Quantity: 2.5m spacing (centre to centre). Fixing and installation as per suppliers specification. Bollards Size: Relocated/Repurposed timber bollards Quantity: Installed to the outside perimeter of car parking area to deter vehicular entry. 1.5m spacing. Provision of at least 2-3 removable bollards to allow for maintenance / emergency access.	Ready to go

ACTION PLAN - AOTEA RESERVE UPGRADE CONT.

DRAFT

ACTION / PROJECT	DESCRIPTION OF KEY ACTIONS	PROJECT TYPE	KEY PHASES	DESIGN OBJECTIVES	DESIGN PARAMETERS	DEPENDENCIES	PROJECT READINESS
Traffic calming	Relocate speed humps from Pouewe and Jervois Street, Kāwhia to Morrison Road, Aotea to slow traffic and improve safety for pedestrians.	Built project		<ul style="list-style-type: none">Slow VehiclesEnsure vehicles can not easily drive around.Visible but not prominent.	- Jervois Street upgrade in Kāwhia	Size: 8000(L)mm x 3000(W)mm Quantity: 1 Materiality: Relocated modular rubber speed table installed to fit width of access road into reserve with a minimum 3m (6 modules) depth. Installed with new fixings approved by initial supplier which are suitable to road surfacing.	Ready to go
Beach Access	Replace existing stairs to provide improved beach access from Aotea Beach Reserve.	Built project		<ul style="list-style-type: none">Safe and accessible.Durable and low maintenance.Visible but not prominent.Simple form of natural and recessive colours and materials.		Size: 6.0(L)m x 2.4(W)m Quantity: 1 Materiality: H5 treated timber construction with dual sided handrails. Construction to achieve compliance with NZS4121:2001. Stairs to be fitted with grip tread or other suitable product to improve traction.	Ready to go
PLAYGROUND AND BBQ AREA							
Shade Structure	Develop a structure adjacent to the existing playground to provide shade and shelter while maintaining the existing seaside character and views to the sea.	Design	<ul style="list-style-type: none">Work with a design build contractor to detail shade structureReview by suitably qualified landscape architectImplement shade structure <p><i>Opportunity - Coordinate a design that is replicable for both Aotea Beach Reserve and Omimiti Reserve.</i></p>	<ul style="list-style-type: none">Provides shade and protection from light rain and weather eventsPrioritise sustainable materialsDurable and low maintenance.Visible but not prominent.Simple form of natural and recessive colours and materials suitable to the coastal context.		Size: 8000(L) x 5000(W)mm Quantity: 1 Materiality: Timber post and beam construction. Single gable corrugated iron roof. Non-trafficable concrete pad base with standard basecourse buildup.	Further scoping/design required

ACTION PLAN - AOTEA RESERVE UPGRADE CONT.

DRAFT

ACTION / PROJECT	DESCRIPTION OF KEY ACTIONS	PROJECT TYPE	KEY PHASES	DESIGN OBJECTIVES	DESIGN PARAMETERS	DEPENDENCIES	PROJECT READINESS
BBQ	Develop a new BBQ and seating area close to the existing playground.	Built project		<ul style="list-style-type: none">Durable and low maintenance.Easy to use and cleanAccessible to people using the park without needing to cross roads.Visible but not prominent.Provide seating and space for food preparation.	<ul style="list-style-type: none">Water sourceShade structureGas / power source	Size: Proprietary Dual Electric Barbeque Quantity: 1 Materiality: Selected external panel colouring to blend with natural environment - Tie in with shelter structure.	Ready to go
Upgrade and consolidate furniture	Upgrade and consolidate the existing furniture in Aotea Reserve	Built project	<ul style="list-style-type: none">Consolidate existing furniture together in clusters to create cohesive gathering areasWork with local contractor to design and construct new furniture where necessary that is visually and materially consistent with existing character.	<ul style="list-style-type: none">Consolidate existing furniture in clusters around the park's edge to maximise the open space area in the centre of the reserve.Cohesive aesthetic that reflects Kāwhia and wider Ōtorohanga rohe.Reinforces a sense of identity, sense of pride and belonging.Durable and low maintenance.Easy to use and clean.Visible but not prominent.Explore using recycled hardwood timber or other local, durable, low-toxicity materials.	<ul style="list-style-type: none">Furniture Strategy		Ready to go

ACTION PLAN - AOTEA RESERVE UPGRADE CONT.

DRAFT

ACTION / PROJECT	DESCRIPTION OF KEY ACTIONS	PROJECT TYPE	KEY PHASES	DESIGN OBJECTIVES	DESIGN PARAMETERS	DEPENDENCIES	PROJECT READINESS
Half Court	<p>Develop a multi-use half court adjacent to the playground that can be used for a range of sports and activities</p> <p><i>Opportunity - Commission a local artist to design and paint court markings.</i></p>	Built project		<ul style="list-style-type: none">Paint with line markings for a range of different games and sports.Provide seating adjacent to the court.Ensure that the area behind the basket is planted to help catch stray ballsDurable and low maintenance.		<p>Size: 14.5m x 7.5m</p> <p>Quantity: 1</p> <p>Materiality: Proprietary basketball hoop with backboard Standard non-trafficable concrete pad and base course build up. Suitable line marking paint with slip resistant properties.</p> <p>2 x galvanised steel leaner bars.</p>	Ready to go
Low retaining wall / bench seat	<p>Develop a long, low retaining wall along the eastern edge of the playground to provide seating and an edge for restoration planting.</p> <p><i>Option #1 - Standalone structure</i></p> <p><i>Option #2 - Integrate with shade structure</i></p>	Built project		<ul style="list-style-type: none">Durable and low maintenance.Allow space for a lawn mower to access the upper platform.Explore using recycled hardwood timber or other local, durable, low-toxicity materials.Simple form of natural and recessive colours and materials.		<p>Size 25m long retaining wall with min 400mm - max 550mm in height.</p> <p>Quantity: 1</p> <p>Materiality: Treated timber or repurposed hardwood retaining wall with timber capping to form playground seating with a seated depth of min 400mm.</p>	Ready to go
PUBLIC TOILET							
Toilet Upgrade	<p>Replace the existing toilet with a new, single-cubicle high-performance toilet adjacent to the car park and close to the existing location.</p>	Built project		<ul style="list-style-type: none">Compost system with low to no smell.Durable and low maintenance.Accessible to people using the park without needing to cross roads.Visible but not prominent.Simple form of natural and recessive colours and materials.	- Water Source	<p>Size: Single Cubicle Toilet Facility - 1900 x 1600 mm min to meet accessibility compliance.</p> <p>Quantity: 1</p> <p>Materiality: Compostable/septic tank toilet unit. External cladding material or finish to feature natural or recessive colours - coordinated to match shelter structure.</p>	Ready to go

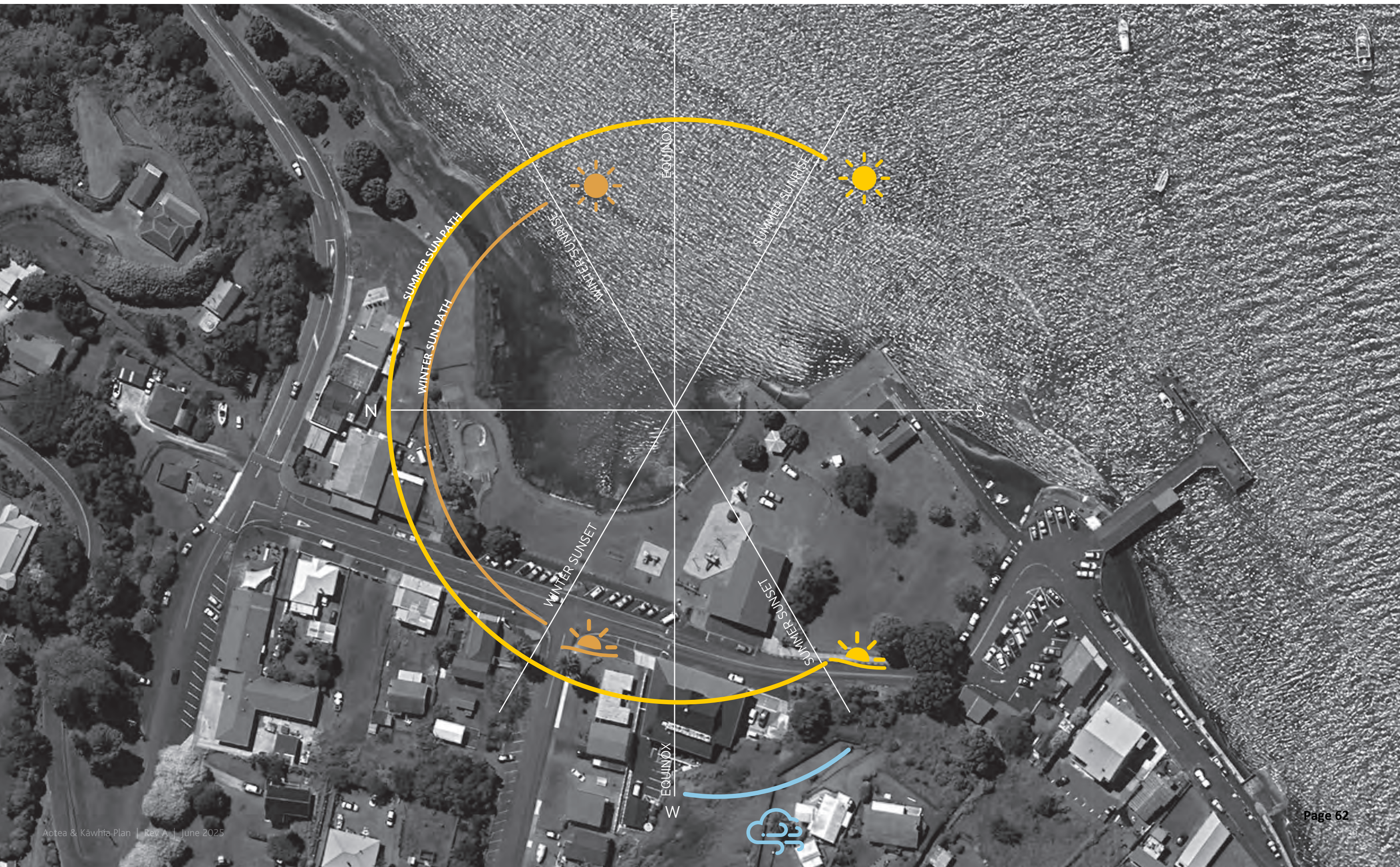
DRAFT

KĀWHIA TOWN CENTRE

KĀWHIA TOWN CENTRE: AERIAL



KĀWHIA TOWN CENTRE: PREVAILING WEATHER CONDITIONS



KĀWHIA TOWN CENTRE: EXISTING SITE PLAN



KEY

ASSETS

- Info Board
- Pou
- Frame
- Picnic Table
- Bench/Seat
- Playground
- Basketball Hoop
- Skate Park
- Rubbish Bin
- Public Toilet
- Drinking Fountain
- Steps
- Drain/Culvert
- Parking

SURFACES

- Grass
- Sand
- Vegetation
- Concrete
- Paving
- Asphalt Road
- Gravel Road
- Canopy
- Building Footprint

FENCING

- Gate
- Removable Bollard
- Timber Fence
- Low Timber Fence
- Timber Bollards
- Sea Wall



KĀWHIA PHOTO ESSAY

DRAFT



KĀWHIA TOWN CENTRE : CONCEPT DESIGN



CONCEPT DESIGN: NOT FOR CONSTRUCTION



Key

STREETS AND PARKING

- 1 Jervois St Speed calming measures
- 2 Wharf Lookout
- Dedicated parking for doctors

KĀWHIA COMMUNITY HALL AND STAGE

- 3 Enhance open space area
- 4 Open Hall to Omimiti Reserve
- 5 Removable bollards manage access
- 6 Community Stage
- 7 Open Kāwhia museum to Omimiti Reserve

FURNITURE

- 8 Upgrade and consolidate furniture
- 9 Upgrade BBQ Shelter
- Park benches and picnic tables

ACTIVE RECREATION

- 10 Upgrade Skate Park
- Potential locations for fitness equipment
- Play equipment

SIGNAGE

- Cultural markers recognising Ngāti Hikairo cultural heritage
- Interpretive sign celebrating Z block landowner heritage

PLANTING

- Coastal Ngaio forest regeneration
- Amenity planting
- Intertidal regeneration planting
- Indicative specimen trees
- Existing trees
- Trees to be removed

KĀWHIA TOWN CENTRE: KEY DIMENSIONS



CONCEPT DESIGN: NOT FOR CONSTRUCTION



DRAFT

ACTION PLAN — KĀWHIA TOWN CENTRE

PARKING PLAN

Develop a parking plan that formalises and quantifies carparks within council-owned land in Kāwhia Town Centre to free up space for alternative uses.

KEY PHASES:
Strategy: Work with a designer and Traffic Planner to undertake an audit and analysis of the parking provision to help quantify and design car parking facilities throughout Kāwhia township.

- Implementation:**
- Reallocate parking from Omimiti Reserve and adjacent to the wharf and beach to allow for other uses.
 - Formalise new parking spaces on Tainui Street and in existing paved area next to the service station to increase the number of formed car parks.

DESIGN OBJECTIVES

- Ensure priority parking spaces are provided for the medical centre, museum and Community Hall.
- Low maintenance, pedestrian friendly and safe.
- Avoid broad expanse of tarmac.
- Capacity to meet day to day and weekend requirements.

KEY

142 remaining carparks

28 carparks to be reallocated

44 proposed additional/formalised carparks



1. JERVOIS STREET UPGRADE

DRAFT

Upgrade Jervois Street with speed calming, street trees and other planting to enhance character, charm and amenity, improve safety for of people of all ages and abilities and support a wide range of uses.

KEY PHASES

Implement a range of speed calming measures including narrowing the carriageway with street trees and amenity planting, and textural changes to formalise safe crossing areas.

DESIGN OBJECTIVES

- Cohesive aesthetic that reflects Kāwhia and wider Otorohanga rohe.
- Planting with natives, with selective exotic specimen trees where appropriate for fast growing height
- Reinforces a sense of identity, sense of pride and belonging.
- Improve the pedestrian connectivity across the main street through improved safety and traffic calming features.
- Safe and accessible.
- Durable and low maintenance.
- Visible but not prominent.
- Simple form of natural and recessive colours and materials.

DESIGN PARAMETERS

Materiality: Exposed aggregate concrete footpaths & crossing facilities. Tarseal carriageways and on-street parking facilities.

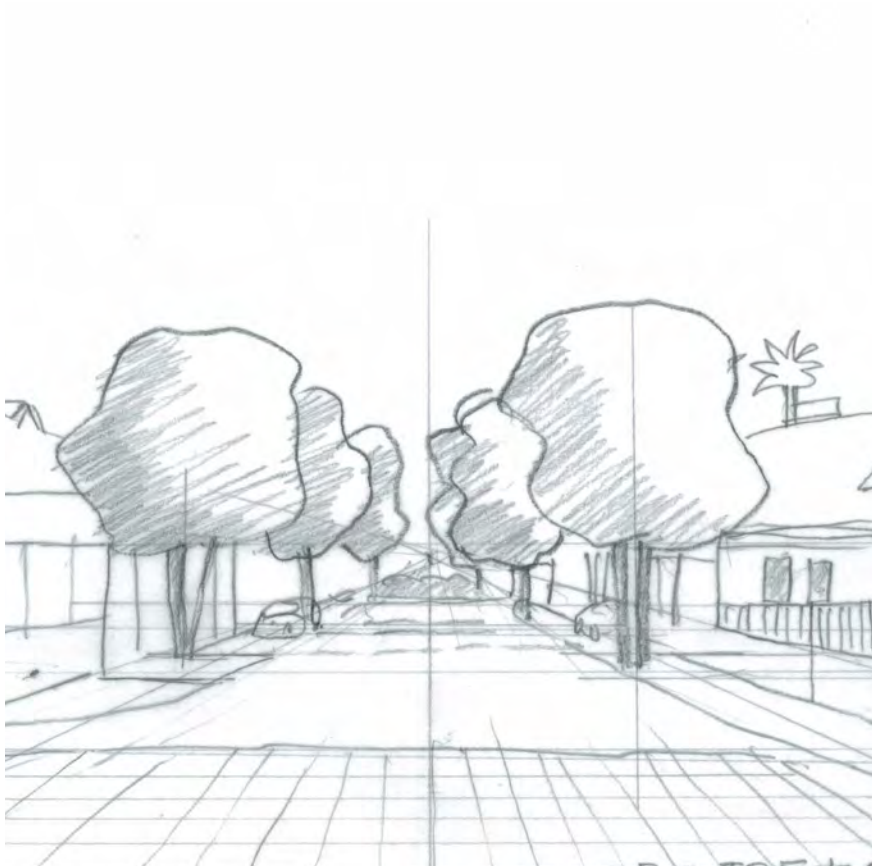
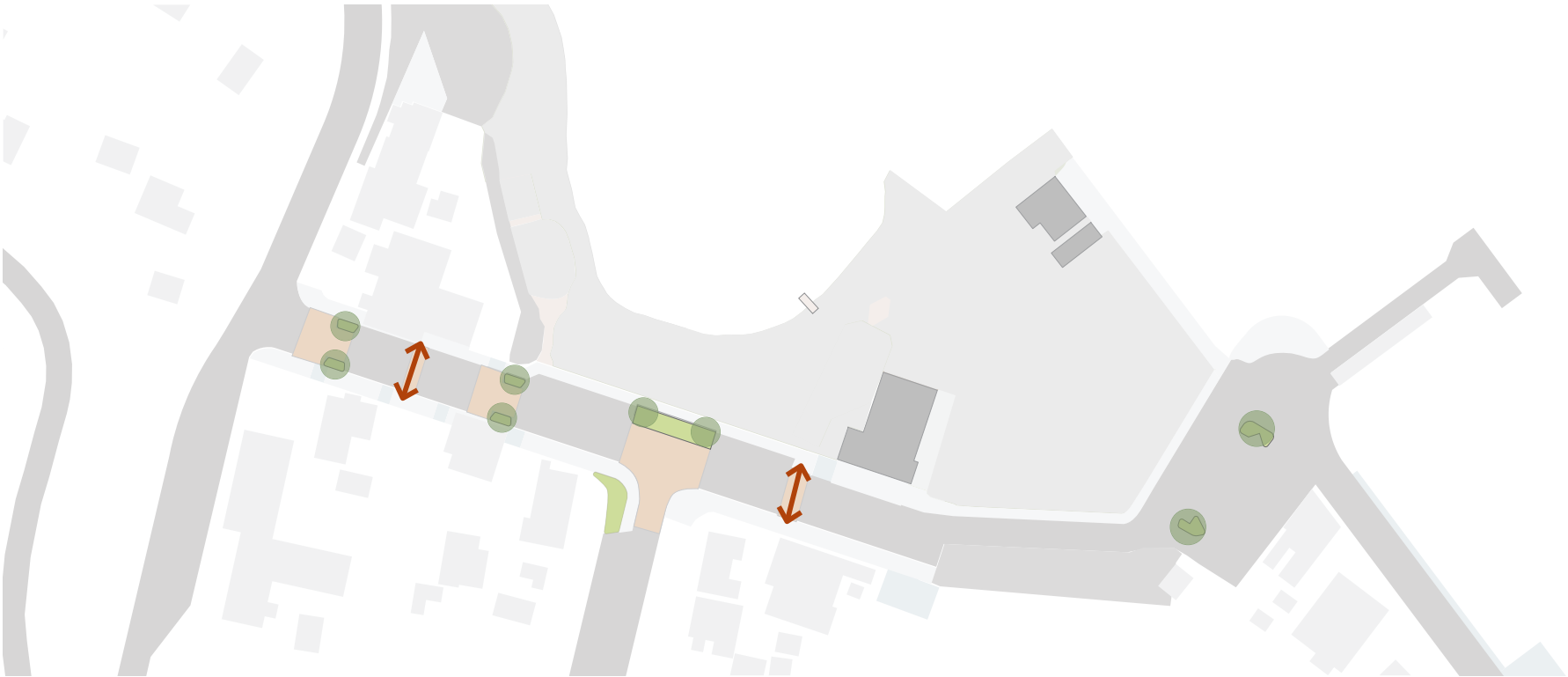
Planting: 8 non-deciduous street trees with understory planting. See Appendix B for planting schedules.

DEPENDENCIES

- Kāwhia parking plan.
- Blue Green Network Strategy.

KEY

- Proposed street trees provide shade, character and slow traffic
- ➡ Formalised crossing points



2. WHARF LOOKOUT

DRAFT

Create a seating and viewing area between the wharf and beach adjacent to Omimiti Reserve.

OPPORTUNITY

Work with a local design and build company with review from a suitably qualified local designer for all built outcomes to ensure consistency.

KEY PHASES

- Work with a design build contractor to detail wharf lookout area.
- Review by suitably qualified landscape architect.
- Implement wharf lookout, modify curb/footpath to extend, repave pedestrian area and add seating.

DESIGN OBJECTIVES

- Reinforces a sense of identity, sense of pride and belonging.
- Increase pedestrian area free of vehicles on the coastal edge.
- Safe and accessible.
- Seats facing both ways, to moana and car park.
- Seats aligned with Kāwhia furniture strategy.
- Durable and low maintenance.
- Visible but not prominent.
- Simple form of natural and recessive colours and materials.

DESIGN PARAMETERS

Balustrade

Approx. 30m of 900(H)mm balustrade to provide fall from height barrier.

Kerb separated pedestrian footpath with accessible pram ramp access.

Planting & Furnishing

2 x Specimen trees.

2 x Bench seats.

1 x Accessible Picnic Table.

Furniture to be inline with wider Kawhai furniture suite strategy.

DEPENDENCIES

- Kāwhia parking plan.
- Kāwhia Furniture Strategy.



KĀWHIA COMMUNITY HALL AND STAGE

Remove parking behind the Kāwhia Community Hall to increase the open space area in Omimiti Reserve and reinstate area to open space with grass and with lockable bollards to provide service access to behind the hall when required.

KEY PHASES

- Scope feasibility of opening the hall to the north or east, or both.
- Work with a design build contractor to detail design options for opening Kāwhia Community Hall to Omimiti Reserve.
- Review by suitably qualified landscape architect/ designer.
- Update designs as necessary and implement.

DESIGN OBJECTIVES

- Increase the area of open space in Omimiti Reserve.
- Open up site lines between the Community Hall and the reserve.
- Provide accessible parking for the Community Hall adjacent to the service entry door.
- Provide greater flexibility of use by local organisations.
- Ensure that food trucks maintain access to power outlets within the reserve.

DEPENDENCIES

- Kāwhia parking plan.

KEY

- Road
- Buildings
- Existing timber bollards
- Ⓜ Proposed removable bollards to restrict access to necessary vehicles to enhance flexible use, access and connectivity in the reserve
- Reduced gravel surface
- Ⓢ Clear understory planting for sightlines
- P Dedicated Community Hall carparks
- ⚡ Access to electrical to be maintained for food trucks

Scale 1:400 @A3



COMMUNITY HALL AND STAGE

DRAFT

4. OPEN KĀWHIA COMMUNITY HALL TO OMIMITI RESERVE

Open the Kāwhia Community Hall to Omimiti Reserve to increase the interaction between the two spaces and the functionality of both.

Option #1 - Open the hall to the north to create a new interface with the existing playground.

Option #2 - Open the hall to the east to create a new interface with newly created open space in the centre of Omimiti Reserve.

Option #3 - Open the hall to the north and east, including the integration of a community stage.

KEY PHASES

- Scope feasibility of opening the hall to the north or east, or both.
- Work with a design build contractor to detail design options for opening Kāwhia Community Hall to Omimiti Reserve.
- Review by suitably qualified landscape architect/designer.
- Update designs as necessary and implement.

DESIGN OBJECTIVES

- Cohesive aesthetic that reflects Kāwhia and wider Ōtorohanga rohe.
- Reinforces a sense of identity, sense of pride and belonging.
- Increase connectivity between the reserve and the hall.
- Provides shade and protection from light rain and weather events
- Durable and low maintenance.
- Visible but not prominent.
- Simple form of natural and recessive colours and materials suitable to the coastal context.

DESIGN PARAMETERS

Materiality: In keeping with character of existing Community Hall.

DEPENDENCIES

Options #2 and #3 - Kāwhia parking plan.

5. RELOCATE BOLLARDS

Enhance the pedestrian connectivity in Omimiti Reserve and to the small beach by the wharf by installing removable and lockable bollards to the entries of both the car access behind Kāwhia Community Hall and the Museum. Bollards will be removable to ensure access can be maintained for appropriate use ie. Emergency Service access, Museum Staff, Food Truck access, Kāwhia Hall user groups and access to Omimiti Reserve for events.

KEY PHASES

- Install lockable removable bollards to reduce parking behind Kāwhia Hall and along the waterfront to key users.
- Work with Kāwhia Museum, Food Truck/Coffee cart vendors, Emergency Services and other appropriate users to ensure ongoing access.

DESIGN OBJECTIVES

- Improve the pedestrian connection between Omimiti Reserve and the small beach.
- Maintain access for the museum, food trucks and emergency services.

6. COMMUNITY STAGE

Create a multi-purpose stage running along the back of the Community Hall.

KEY PHASES

- Work with a design build contractor to detail design options for opening Kāwhia Community Hall to Omimiti Reserve.
- Review by a suitably qualified landscape architect/designer.
- Update designs as necessary and implement.

DESIGN OBJECTIVES

- Cohesive aesthetic that is sensitive to the existing character of the hall, reserve and museum.
- Provides shade and protection from light rain and weather events.
- Safe and accessible.
- Durable and low maintenance.
- Visible but not prominent.
- Simple form of natural and recessive colours and materials suitable to the coastal context.
- Stage is flexible, accessible, attractive, able to be used by diverse performance (and other) groups.

DESIGN PARAMETERS

Size: 130m2

Materiality: H3.2 screw fixed timber deck with timber substructure. Maximum 450mm height.

DEPENDENCIES

- Kāwhia parking plan.
- Option #3 of Opening Kāwhia Community Hall to Omimiti Reserve.

7. ADDITIONAL ACTION: OPEN KĀWHIA MUSEUM TO OMIMITI RESERVE

Work with Kāwhia Museum to explore how the museum can be opened up to Omimiti Reserve to increase the interaction between the two spaces.

KEY ACTIONS/PHASES

Kāwhia Museum Committee to develop brief

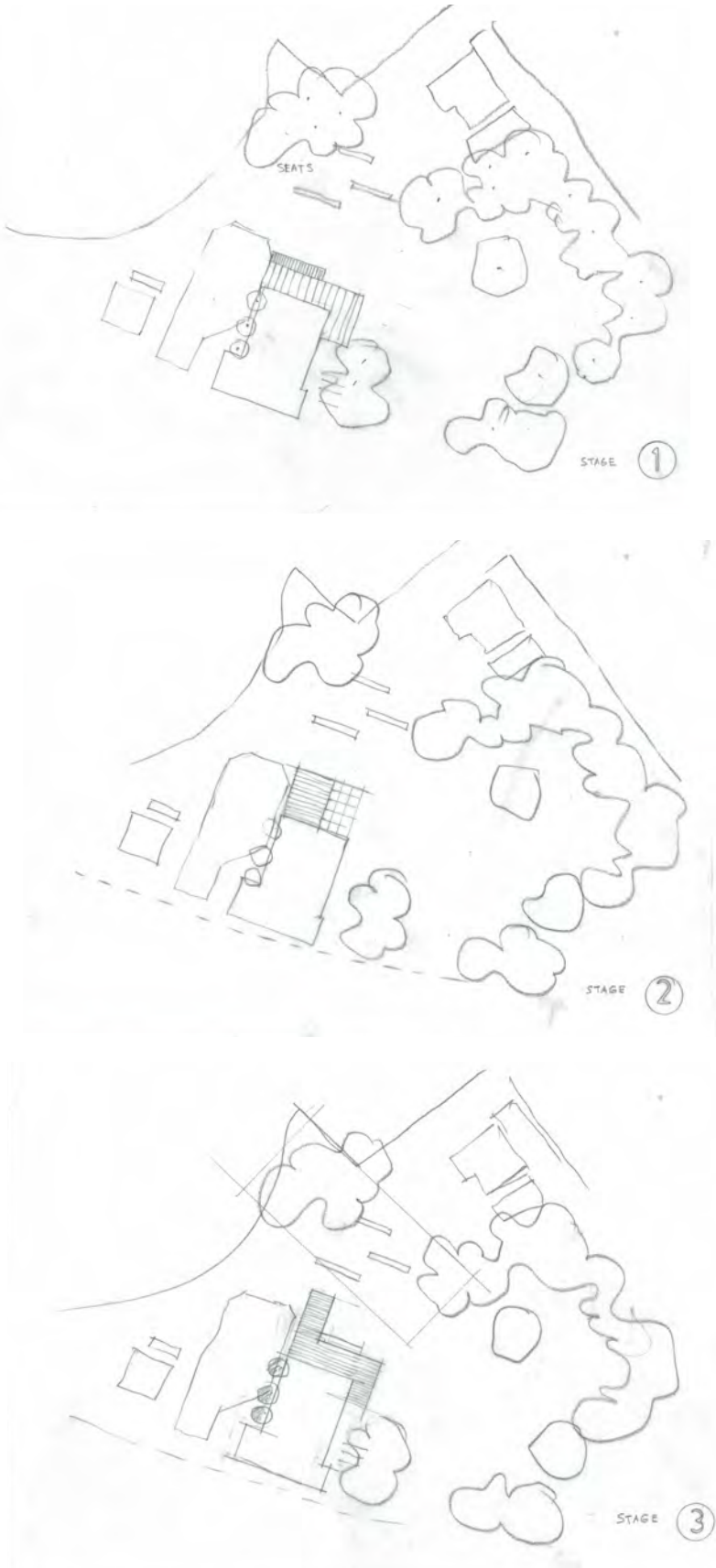
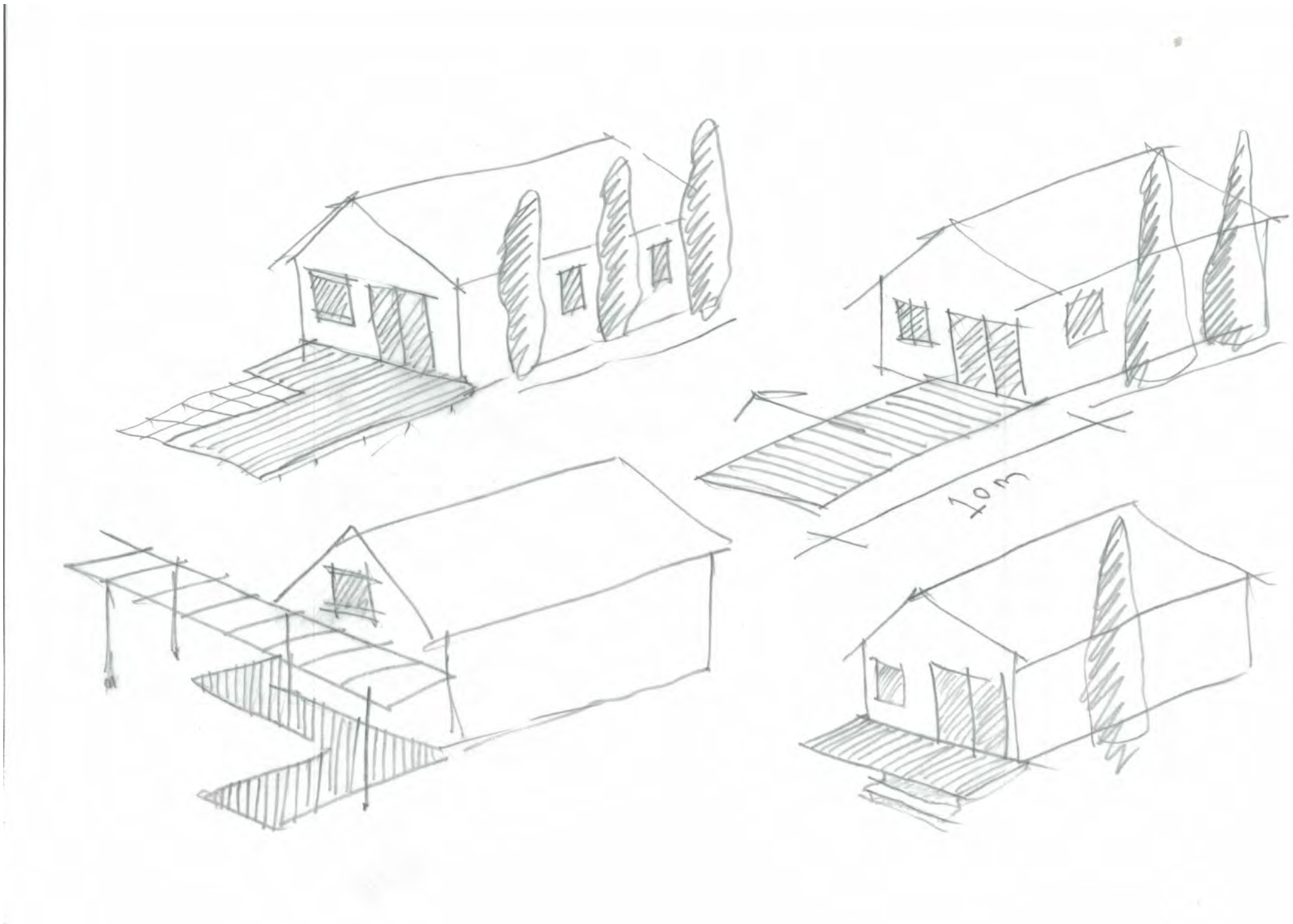
DESIGN OBJECTIVES

- Maintains the integrity of the Museum building and collection.
- Cohesive aesthetic that reflects Kāwhia and wider Ōtorohanga rohe.
- Reinforces a sense of identity, sense of pride and belonging.
- Increase connectivity between the reserve and the Museum.
- Simple form of natural and recessive colours and materials suitable to the coastal context.
- Extends and enhances visitor experience of the Museum, its collection and its sense of place. Provides potential for interaction with events in Omimiti Reserve.

Dependencies: Independent funding for design and implementation.

COMMUNITY HALL AND STAGE - CONCEPT SKETCHES

DRAFT



KĀWHIA TOWN CENTRE SURFACE AND FURNITURE STRATEGY



0 10 20 50 80m

DRAFT

CONCEPT DESIGN: NOT FOR CONSTRUCTION

KEY

Picnic tables x11

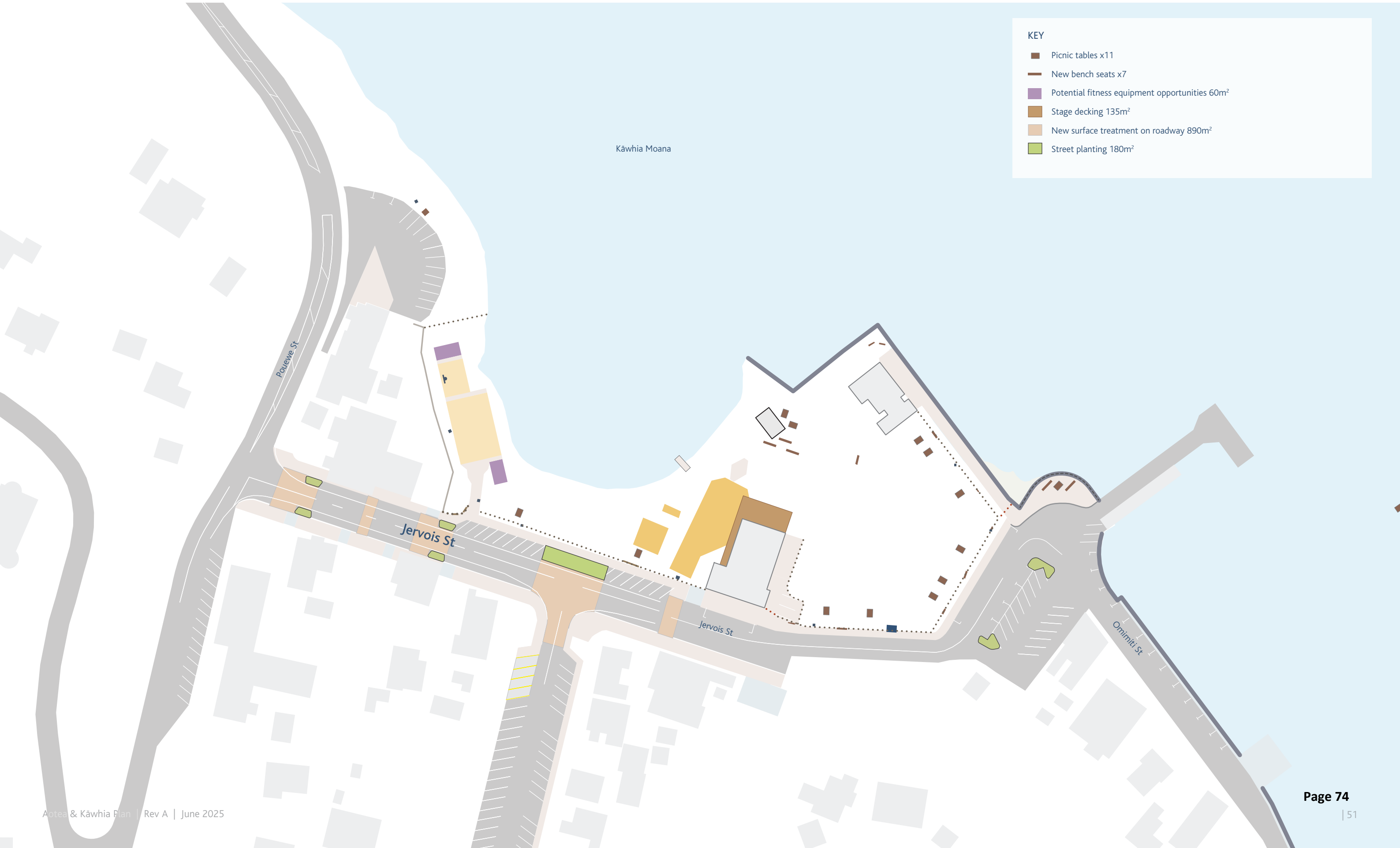
New bench seats x7

Potential fitness equipment opportunities 60m²

Stage decking 135m²

New surface treatment on roadway 890m²

Street planting 180m²



8. UPGRADE BBQ SHELTER

DRAFT

Upgrade existing BBQ shelter to maintain and enhance BBQ facilities.

KEY PHASES

Feasibility, Planning and Design
Work with an architect/designer to undertake detailed design and costings for a new shelter for the BBQ. The design should incorporate sustainable, durable and affordable materials that are in keeping with Kāwhia’s local character. This will replace the existing shelter as it reaches its end of life.

Opportunity: Coordinate a design that is replicable for both Aotea Beach Reserve and Omimiti Reserve.

Built Project
Secure funding and construct the shelter.
Opportunity: work with local tradesperson to construct the shelter.

- DESIGN OBJECTIVES**
- Provides shade and protection from light rain and weather events
 - Durable and low maintenance.
 - Visible but not prominent.
 - Simple form of natural and recessive colours and materials suitable to the coastal context

DESIGN PARAMETERS
Size: 8000(L) x 5000(W)mm

Quantity: 1

Materiality: Timber post and beam construction.
Single gable corrugated iron roof.



UPGRADE AND CONSOLIDATE FURNITURE

DRAFT

Upgrade and consolidate the existing furniture in Omimiti Reserve.

KEY PHASES

- Consolidate existing furniture together in clusters to create cohesive gathering areas.
- Work with local contractor to design and construct new furniture where necessary that is visually and materially consistent with existing character.

DESIGN OBJECTIVES

- Consolidate existing furniture in clusters around the park's edge to maximise the open space area in the centre of the reserve.
- Cohesive aesthetic that reflects Kāwhia and wider Ōtorohanga rohe.
- Reinforces a sense of identity, sense of pride and belonging.
- Durable and low maintenance.
- Easy to use and clean.
- Visible but not prominent.
- Explore using recycled hardwood timber or other local, durable, low-toxicity materials.

DEPENDENCIES

- Furniture Strategy.



10. SKATE PARK RETROFIT

DRAFT

Upgrade the existing skatepark to make it accessible to a wider range of users, particularly people of different ages and skill levels.

OPPORTUNITY

Commission a local artist to help design and paint the skate park.

KEY PHASES

- Review and scope best practice/precedents for skateparks that cater to a range of ages and abilities
- Engage suitably qualified design/build partner who specialises in skate parks.

DESIGN OBJECTIVES

- Durable and low maintenance.
- Visible but not prominent.
- Simple form of natural and recessive colours and materials.



KĀWHIA TOWN CENTRE PLANTING PROGRAMME



KĀWHIA TOWN CENTRE PLANTING PROGRAMME

Develop, implement and maintain a planting programme for Omimiti Reserve and Jervois St that includes specimen trees, amenity planting and intertidal and coastal forest regeneration to increase biodiversity, enhance amenity and build resilience.

KEY ACTIONS/PHASES

Work alongside local community to implement planting outlined in the blue green network.

DESIGN OBJECTIVES

- Use plants appropriate to the coastal and ecological context.
- Utilise low-maintenance, robust and resilient species.
- Utilise ecosource species where possible.
- Provide shade and shelter, and enhance coastal amenities.
- Increase biodiversity and build resilience.
- Stage implementation along the Pouewe shoreline as the seawall is phased out.

DEPENDENCIES

- Ongoing maintenance
- Community buy-in and support.

See Planting Schedules in Appendix for more detail

SPECIMEN + STREET
TREES



AMENITY PLANTING



INTERTIDAL
REGENERATION



COASTAL NGAIO FOREST
REGENERATION



DRAFT

ACTION / PROJECT	DESCRIPTION OF KEY ACTIONS	PROJECT TYPE	KEY PHASES	DESIGN OBJECTIVES	DESIGN PARAMETERS	DEPENDENCIES	PROJECT READINESS
STREETS AND PARKING							
Parking Plan	Develop a parking plan that formalises and quantifies car parks within council-owned land in Kāwhia Town Centre to free up space for alternative uses.	Strategy	<ul style="list-style-type: none">Work with a designer and Traffic Planner to undertake an audit and analysis of the parking provision to help quantify and design car parking facilities throughout Kāwhia township.	<ul style="list-style-type: none">Ensure priority parking spaces are provided for the medical centre, museum and Community Hall.low maintenance, pedestrian friendly and safe.Avoid broad expanse of tarmac.Capacity meet day to day and weekend requirements.			Further scoping/design required
		Implementation	<ul style="list-style-type: none">Reallocate parking from Omimiti Reserve and adjacent to the wharf and beach to allow for other uses.Formalise new parking spaces on Tainui Street and in existing paved area next to the service station to increase the number of formed car parks.				
Jervois St Upgrade	Upgrade Jervois Street with speed calming, street trees and other planting to enhance character, charm and amenity, improve safety for of people of all ages and abilities and support a wide range of uses.	Built project	<ul style="list-style-type: none">Implement a range of speed calming measures including narrowing the carriageway with street trees and amenity planting, and textural changes to formalise safe crossing areas	<ul style="list-style-type: none">Cohesive aesthetic that reflects Kāwhia and wider Ōtorohanga rohe.Planting with natives, with selective exotic specimen trees where appropriate for fast growing heightReinforces a sense of identity, sense of pride and belonging.Improve the pedestrian connectivity across the main Street through improved safety and traffic calming features.Safe and accessible.Durable and low maintenance.Visible but not prominent.Simple form of natural and recessive colours and materials.	<ul style="list-style-type: none">Kāwhia parking plan.Blue Green Network Strategy.	Materiality: Exposed aggregate concrete footpaths & crossing facilities. Tarseal carriageways and on-street parking facilities. Planting: 6 suitable specimen street trees with understory planting.	Ready to go

ACTION PLAN - KĀWHIA TOWNSHIP CONT.

DRAFT

ACTION / PROJECT	DESCRIPTION OF KEY ACTIONS	PROJECT TYPE	KEY PHASES	DESIGN OBJECTIVES	DESIGN PARAMETERS	DEPENDENCIES	PROJECT READINESS
Wharf Lookout	<p>Create a seating and viewing area between the wharf and beach adjacent to Omimiti Reserve.</p> <p><i>Opportunity - work with a local design and build company with review from a suitably qualified local designer for all built outcomes to ensure consistency.</i></p>	Design and build with review by suitably qualified professional	<ul style="list-style-type: none">• Work with a design build contractor to detail wharf lookout area• Review by suitably qualified landscape architect• Implement wharf lookout, modify curb/footpath to extend, repave pedestrian area and add seating	<ul style="list-style-type: none">• Reinforces a sense of identity, sense of pride and belonging.• Increase pedestrian area free of vehicles on the coastal edge.• Safe and accessible.• Seats facing both ways, to moana and car park• Seats aligned with Kāwhia furniture strategy.• Durable and low maintenance.• Visible but not prominent.• Simple form of natural and recessive colours and materials.	<ul style="list-style-type: none">• Kāwhia parking plan.• Kāwhia Furniture Strategy	<p>Balustrade Approx. 30m of 900(H)mm balustrade to provide fall from height barrier. Kerb separated pedestrian footpath with accessible pram ramp access.</p> <p>Planting & Furnishing 2 x Specimen trees 2 x Bench seats 1 x Accessible Picnic Table Furniture to be inline with wider Kawhai furniture suite strategy.</p>	Further scoping/design required
Enhance Open Space Area	Remove or reduce parking behind the Kāwhia Community Hall to increase the open space area in Omimiti Reserve / Remove gravel parking surface and reinstate area to open space with grass and with lockable bollards to provide service access to behind the hall when required.	Built project	<ul style="list-style-type: none">• Remove parking and relocate bollards• Prepare base and reseed open area with grass	<ul style="list-style-type: none">• Increase the area of open space in Omimiti Reserve.• Open up site lines between the Community Hall and the reserve.• Provide accessible parking for the Community Hall adjacent to the service entry door.• Provide greater flexibility of use by local organisations.• Ensure that food trucks maintain access to power outlets within the reserve.	<ul style="list-style-type: none">• Kāwhia parking plan.		Ready to go

ACTION PLAN - KĀWHIA TOWNSHIP CONT.

DRAFT

ACTION / PROJECT	DESCRIPTION OF KEY ACTIONS	PROJECT TYPE	KEY PHASES	DESIGN OBJECTIVES	DESIGN PARAMETERS	DEPENDENCIES	PROJECT READINESS
Open Kāwhia Community Hall to Omimiti Reserve	<p>Open the Kāwhia Community Hall to Omimiti Reserve to increase the interaction between the two spaces and the functionality of both.</p> <p><i>Option #1 - Open the hall to the north to create a new interface with the existing playground.</i></p> <p><i>Option #2 - Open the hall to the east to create a new interface with newly created open space in the centre of Omimiti Reserve.</i></p> <p><i>Option #3 - Open the hall to the north and east, including the integration of a community stage.</i></p>	Design and build with review by suitably qualified professional	<ul style="list-style-type: none">• Scope feasibility of opening the hall will be opened to the north or east, or both• Work with an design build contractor to detail design options for opening Kāwhia Community Hall to Omimiti Reserve• Review by suitably qualified landscape architect/designer• Update designs as necessary and implement.	<ul style="list-style-type: none">• Cohesive aesthetic that is sensitive to the exiting character of the hall• Bifold doors visually and physically connecting the main hall area to the reserve• Increase connectivity between the reserve and the hall.• Durable and low maintenance.• Visible but not prominent.• Simple form of natural and recessive colours and materials suitable to the coastal context.	<ul style="list-style-type: none">• Options #2 and #3 - Kāwhia parking plan.	Materiality: In Keeping with character of existing town hall.	Further scoping/design required
Relocate Bollards	Enhance the pedestrian connectivity in Omimiti Reserve and to the small beach by the Wharf by installing removable and lockable bollards to the entries of both the car access behind Kāwhia Community Hall and the Museum. Bollards will be removable to ensure access can be maintained for appropriate use ie. Emergency Service access, Museum Staff, Food Truck access, Kāwhia Hall user groups and access to Omimiti Reserve for events.		<ul style="list-style-type: none">• Install lockable removable bollards to reduce parking behind Kāwhia Hall and along the waterfront to key users• Work with Kāwhia Museum, Food Truck/Coffee cart vendors, Emergency Services and other appropriate users to ensure ongoing access.	<ul style="list-style-type: none">• Improve the pedestrian connection between Omimiti Reserve and the small beach.• Maintain access for the museum, food trucks and emergency services.			Ready to go

ACTION PLAN - KĀWHIA TOWNSHIP CONT.

DRAFT

ACTION / PROJECT	DESCRIPTION OF KEY ACTIONS	PROJECT TYPE	KEY PHASES	DESIGN OBJECTIVES	DESIGN PARAMETERS	DEPENDENCIES	PROJECT READINESS
Community Stage	Create a multi-purpose stage running along the back of the Community Hall.	Design and build with review by suitably qualified professional	<ul style="list-style-type: none">• Work with a design build contractor to detail design options for opening Kāwhia Community Hall to Omimiti Reserve• Review by suitably qualified landscape architect/designer• Update designs as necessary and implement	<ul style="list-style-type: none">• Cohesive aesthetic that is sensitive to the exiting character of the hall, reserve and museum.• Provides shade and protection from light rain and weather events.• Safe and accessible.• Durable and low maintenance.• Visible but not prominent.• Simple form of natural and recessive colours and materials suitable to the coastal context.• Stage is flexible, accessible, attractive, able to be used by diverse performance (and other) groups.	<ul style="list-style-type: none">• Kāwhia parking plan.• Option 3 of the Open Kāwhia Community Hall to Omimiti Reserve.	<p>Size: 130m2</p> <p>Maximum height: 450mm</p> <p>Materiality: H3.2 screw fixed timber deck with timber substructure.</p>	Further scoping/design required
Open Kāwhia museum to Omimiti Reserve	Work with Kāwhia Museum to explore how the museum can be opened up to Omimiti Reserve to increase the interaction between the two spaces.	Scoping	Kāwhia Museum Committee to develop brief.	<ul style="list-style-type: none">• Maintains the integrity of the Museum building and collection.• Cohesive aesthetic that reflects Kāwhia and wider Ōtorohanga rohe.• Reinforces a sense of identity, sense of pride and belonging.• Increase connectivity between the reserve and the Museum.• Simple form of natural and recessive colours and materials suitable to the coastal context.• Extends and enhances visitor experience of the Museum, its collection and its sense of place. Provides potential for interaction with events in Omimiti Reserve.	<ul style="list-style-type: none">• - Independent funding for design and implementation.		Further scoping/design required

FURNITURE

ACTION PLAN - KĀWHIA TOWNSHIP CONT.

DRAFT

ACTION / PROJECT	DESCRIPTION OF KEY ACTIONS	PROJECT TYPE	KEY PHASES	DESIGN OBJECTIVES	DESIGN PARAMETERS	DEPENDENCIES	PROJECT READINESS
Upgrade and consolidate furniture	Upgrade and consolidate the existing furniture in Omimiti Reserve	Built project	<ul style="list-style-type: none">Consolidate existing furniture together in clusters to create cohesive gathering areas.Work with local contractor to design and construct new furniture where necessary that is visually and materially consistent with existing character.	<ul style="list-style-type: none">Consolidate existing furniture in clusters around the park's edge to maximise the open space area in the centre of the reserve.Cohesive aesthetic that reflects Kāwhia and wider Ōtorohanga rohe.Reinforces a sense of identity, sense of pride and belonging.Durable and low maintenance.Easy to use and clean.Visible but not prominent.Explore using recycled hardwood timber or other local, durable, low-toxicity materials.	<ul style="list-style-type: none">Furniture Strategy		Ready to go
Upgrade BBQ Shelter	Upgrade existing BBQ shelter to maintain and enhance BBQ facilities.	Feasibility, Planning and Design	<ul style="list-style-type: none">Work with a design build contractor to detail shade structure.Review by suitably qualified landscape architect.Implement shade structure. <p><i>Opportunity - Coordinate a design that is replicable for both Aotea Beach Reserve and Omimiti Reserve.</i></p>	<ul style="list-style-type: none">Provides shade and protection from light rain and weather events.Durable and low maintenance.Visible but not prominent.Simple form of natural and recessive colours and materials suitable to the coastal context.		<p>Size: 8000(L) x 5000(W)mm</p> <p>Quantity: 1</p> <p>Materiality: Timber post and beam construction. Single gable corrugated iron roof.</p>	Further scoping/design required

ACTIVE RECREATION

ACTION PLAN - KĀWHIA TOWNSHIP CONT.

DRAFT

ACTION / PROJECT	DESCRIPTION OF KEY ACTIONS	PROJECT TYPE	KEY PHASES	DESIGN OBJECTIVES	DESIGN PARAMETERS	DEPENDENCIES	PROJECT READINESS
Upgrade Skate Park	<p>Upgrade the existing skatepark to make it accessible to a wider range of users, particularly people of different ages and skill levels.</p> <p><i>Opportunity - Commission a local artist to help design and paint the skate park.</i></p>	Design and build with review by suitably qualified professional	<ul style="list-style-type: none">Review and scope best practice/ precedents for skateparks that cater to a range of ages and abilities.Engage suitably qualified design/ build partner who specialises in skate parks.	<ul style="list-style-type: none">Durable and low maintenance.Visible but not prominent.Simple form of natural and recessive colours and materials.			Further scoping/design required
PLANTING PROGRAMME							
Planting Programme	Develop, implement and maintain a planting programme for Omimiti Reserve and Jervois St that includes Specimen Trees, amenity planting and intertidal and coastal forest regeneration to increase biodiversity, enhance amenity and build resilience.	Implementation and management	Work alongside local community to implement planting outlined in the blue green network	<ul style="list-style-type: none">Use plants appropriate to the coastal and ecological context.Utilise low-maintenance, robust and resilient species.Utilise ecosource species where possibleProvide shade and shelter, and enhance coastal amenities.Increase biodiversity and build resilience.Stage implementation along the Pouewe shoreline as the seawall is phased out.	<ul style="list-style-type: none">Ongoing maintenanceCommunity buy-in and support.		Ready to go
ADDITIONAL PROJECTS							
Form based code for Jervois Street		Planning		<ul style="list-style-type: none">Reinforce Jervois Street as Kāwhia's main street by creating a strong and continuous street frontage.Ensuring any new development is in keeping with Kāwhia's existing character and values.Creating a strong and continuous street frontage on both sides.			Further scoping/design required

DRAFT

KĀWHIA NETWORK

KĀWHIA HARBOUR



Scale 1:50,000 @A3





KĀWHIA NETWORK

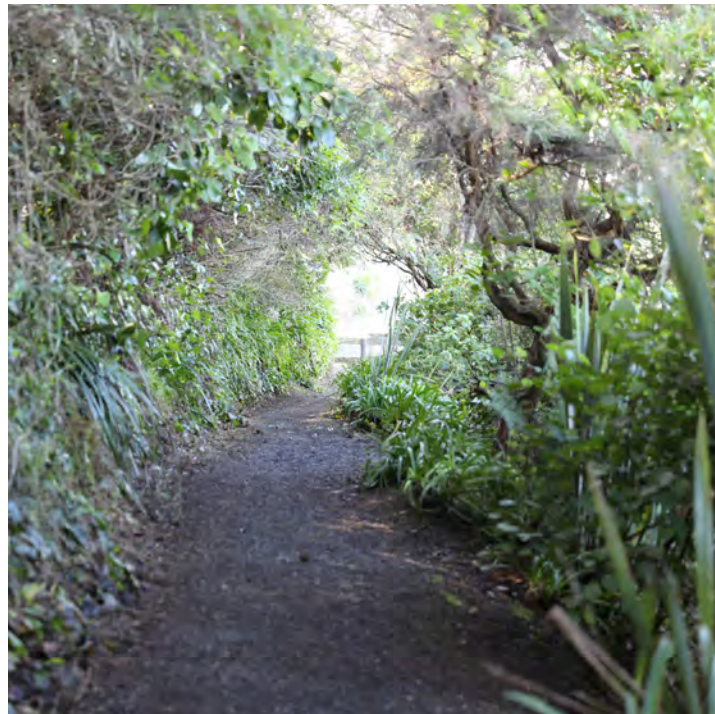
- KEY
- Establishing a Walking Loop
 - Offroad connections
 - Connections to the wider rohe
 - Road
 - Buildings
 - 10m contour
 - Reserves and open space
 - Existing trees and other vegetation
 - Existing Ecological patches

Scale 1:7,500 @A3



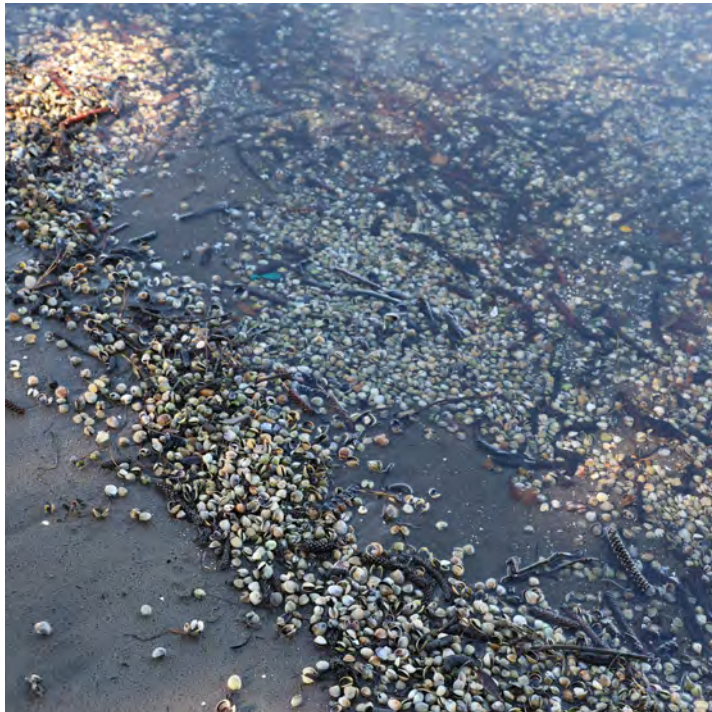
KAWHIA LOOP PHOTO ESSAY

DRAFT



KĀWHIA CHARACTER

DRAFT



DRAFT

ACTION PLAN — KĀWHIA NETWORK





KĀWHIA NETWORK OPPORTUNITIES

This map identifies opportunities to improve the access and use of publicly owned land across Kāwhia, and covers opportunities for:

- Fitness equipment
- Furniture
- Signage and wayfinding
- Cultural heritage markers/ mahi toi like pou and kōwhatu
- Street trees
- Low planting

Opportunities were categorised according to a range of variables that make certain activities more or less feasible including slope, overhead powerlines and proximity to sites of significance.

KEY OPPORTUNITIES

-  Fitness equipment; furniture; signage and wayfinding; pou and kōwhatu; street trees and low planting.
-  Fitness equipment; furniture; signage and wayfinding; pou and kōwhatu; low planting.
-  Signage and wayfinding; pou and kōwhatu; street trees and low planting.
-  Signage and wayfinding; pou and kōwhatu; and low planting.

Scale 1:5,000 @A3



KĀWHIA LOOP

KEY ACTIONS

- Develop a walking loop around Kāwhia connecting reserves and public spaces through low-impact interventions, including trees, cultural heritage markers such as pou and Kōwhatu, signage and wayfinding, furniture and exercise equipment*.
- Work with mana whenua including Te Rūnanganui o Ngāti Hikairo, Te Rūnanga o Ngāti Mahuta ki Te Hauāuru and Maketū Marae to identify key locations to highlight diverse cultural heritage sites for pou, kōwhatu and other cultural markers.
- Work with Te Whare Taonga o Kāwhia (Kāwhia Museum Committee) as stakeholders to highlight historical sites
- Locate key areas that require protection to ensure that elements along the loop including planting, signage and wayfinding, fitness equipment and furniture are placed appropriately.
- Develop a Tree Framework for the walking loop including Jervis St and other Kāwhia backstreets.

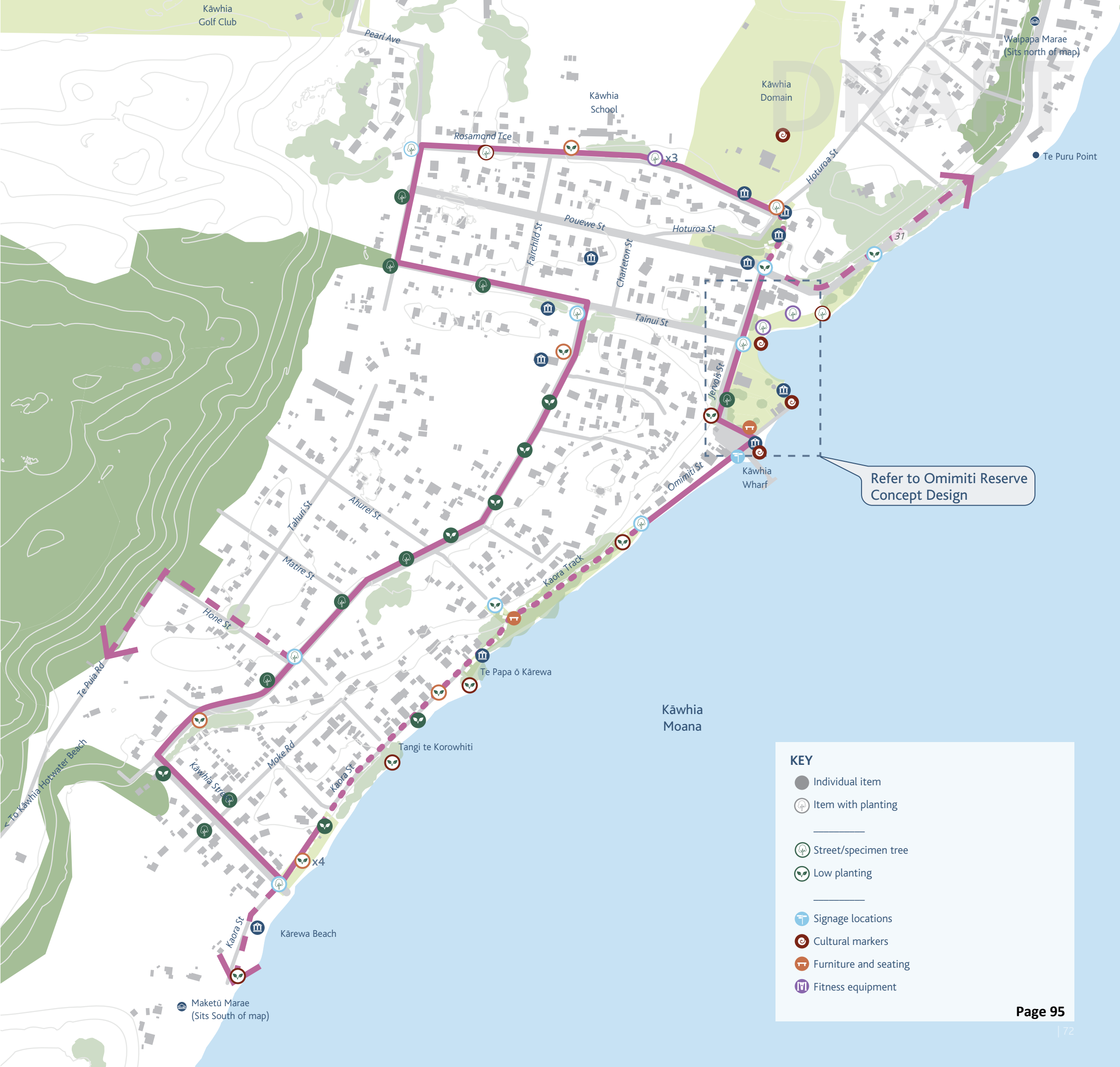
DESIGN OBJECTIVES

- A clearly defined walking route that helps locals and visitors navigate the town, and tell stories of its history along the way.
- Cohesive aesthetic that reflects Kāwhia and wider Ōtorohanga rohe.
- Reinforces a sense of identity, sense of pride and belonging.

DEPENDENCIES

- Engagement with Te Rūnanganui o Ngāti Hikairo and Te Rūnanga o Ngāti Mahuta ki Te Hauāuru and Maketū Marae
- Blue-green network strategy
- Cultural heritage strategy
- Built heritage strategy
- Signage strategy
- Furniture Strategy

Scale 1:5,000 @A3



KEY

- Individual item
- Item with planting
- Street/specimen tree
- Low planting
- Signage locations
- Cultural markers
- Furniture and seating
- Fitness equipment

Refer to Omimiti Reserve Concept Design

BLUE-GREEN NETWORK

KEY ACTIONS

Develop a blue-green network across Kāwhia to enhance, maintain and protect Kāwhia’s biodiversity by creating an interconnected network composed of existing areas of ecological significance, intertidal zones, riparian corridors, patches of forest habitats and around the Kāwhia Loop.

Opportunity- Resource and work with Ngāti Te Wehi and Ōkapu Marae in Aotea to implement planting in Aotea Beach Reserve

Opportunity- Engage Te Rūnanganui o Te Rūnanganui o Ngāti Hikairo to understand their interest in working together to implement planting in Kāwhia Centre and the wider network (Note: Ngāti Te Wehi have already identified an interest in playing an active role in planting within Aotea Beach Reserve)

Opportunity- Engage Te Rūnanga o Ngāti Mahuta ki Te Hauāuru and Maketū Marae regarding planting over the wider network

Opportunity- Resource and work with Te Taiao Kāwhia Moana planning the organisation, planting and ongoing maintenance of regeneration efforts in Kāwhia

Opportunity - Work with local nursery to support the regeneration of Kāwhia and Aotea



KEY

EXISTING ENVIRONMENT

Historic Pouewe Stream

Current day Pouewe Stream (Piped)

Reserves and open space

Existing Ecological patches

Existing native forest

Existing exotic forest

FUTURE OPPORTUNITIES

Planting along the loop connects existing ecosystems

Street/Specimen trees

Low amenity planting

Coastal forest regeneration

Intertidal regeneration

Aotea & Kāwhia Plan | Rev A | June 2025

Page 96

| 73

BLUE-GREEN NETWORK PLANT COMMUNITIES

Plans and schedules located in the appendix identify key species for planting in a range of contexts including coastal forest and intertidal regeneration; amenity and specimen tree planting for across the Kāwhia network

DESIGN OBJECTIVES

- Reinforces a sense of identity, sense of pride and belonging.
- Improve biodiversity and ecological connectivity
- Ensure species are resilient and appropriate to the environmental and cultural context.
- Utilise eco sourced species where practical.
- Street Tree Framework should use large scale trees to suit rural character.
- Identify environmental targets for canopy coverage and the extent of ecosystem coverage
- Encourage and support Kāwhia residents to play an active role in the care, protection, restoration and regeneration of their parks, reserves and streets

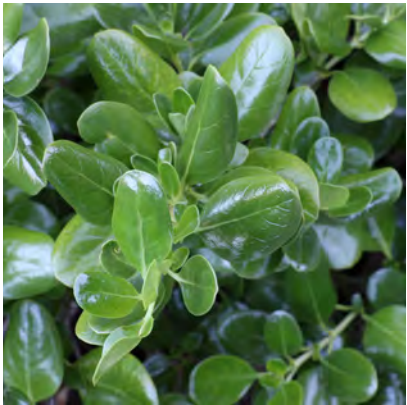
DEPENDENCIES

- Engagement with Te Rūnanganui o Ngāti Hikairo, Te Rūnanga o Ngāti Mahuta ki Te Hauāuru and Maketū Marae
- Blue-green network strategy
- Cultural heritage strategy
- Built heritage strategy
- Signage strategy
- Furniture Strategy

SPECIMEN + STREET
TREES



AMENITY
PLANTING



NGAHERE + COASTAL
ECOSYSTEMS



INTERTIDAL ECOSYSTEMS



CULTURAL HERITAGE

Engage with Te Rūnanganui o Ngāti Hikairo, Te Rūnanga o Ngāti Mahuta ki Te Hauāuru and Maketū Marae to confirm how cultural landscapes and sites of significance can be protected and, where appropriate, highlighted and celebrated through the Kāwhia rohe

KEY PHASES:

Engagement: Engage with Te Rūnanganui o Ngāti Hikairo, Te Rūnanga o Ngāti Mahuta ki Te Hauāuru and Maketū Marae to understand how they would like to protect, celebrate, and where appropriate, highlight their cultural heritage across Kāwhia

Design and Implementation: Work with mana whenua and ringatoi to develop pou, kōwhatu and other mahi toi, as appropriate

DESIGN OBJECTIVES

To be determined through engagement.

DEPENDENCIES:

- Availability and resourcing of Council and mana whenua
- Development of signage strategy.

KEY

- Establishing a Walking Loop
- Offroad connections
- Connections to the wider area
- Opportunities to highlight/celebrate cultural heritage
- Marae
- Historic Pouewe Stream (now piped)

*Note: Sites indicated on this map have been supplied by Te Rūnanganui o Ngāti Hikairo recommended advisor as part of the cultural heritage mapping undertaken for a signage strategy led by Kāwhia Community Board.

Scale 1:5,000 @A3



CELEBRATING CULTURAL HERITAGE WITHIN THE SIGNAGE STRATEGY

DRAFT



Kōwhatu



POU

BUILT HERITAGE

Work with Kāwhia Museum to identify and highlight historic structures and locations in and around Kāwhia township to document and, where appropriate, highlight Kāwhia’s character and heritage.

Opportunity - work with Kāwhia Museum as the caretakers of this knowledge to host information about built heritage in Kāwhia, whether online or in physical form

Opportunity - work with Kāwhia Museum to identify opportunities to incorporate some of this information into the signage strategy

KEY PHASES:
Strategy: Work with Kāwhia Museum and other local experts to identify a historical narrative for the built heritage in Kāwhia involving of all interested parties

DESIGN OBJECTIVES

- Cohesive aesthetic that reflects Kāwhia and wider Ōtorohanga rohe.
- Reinforces a sense of identity, sense of pride and belonging.

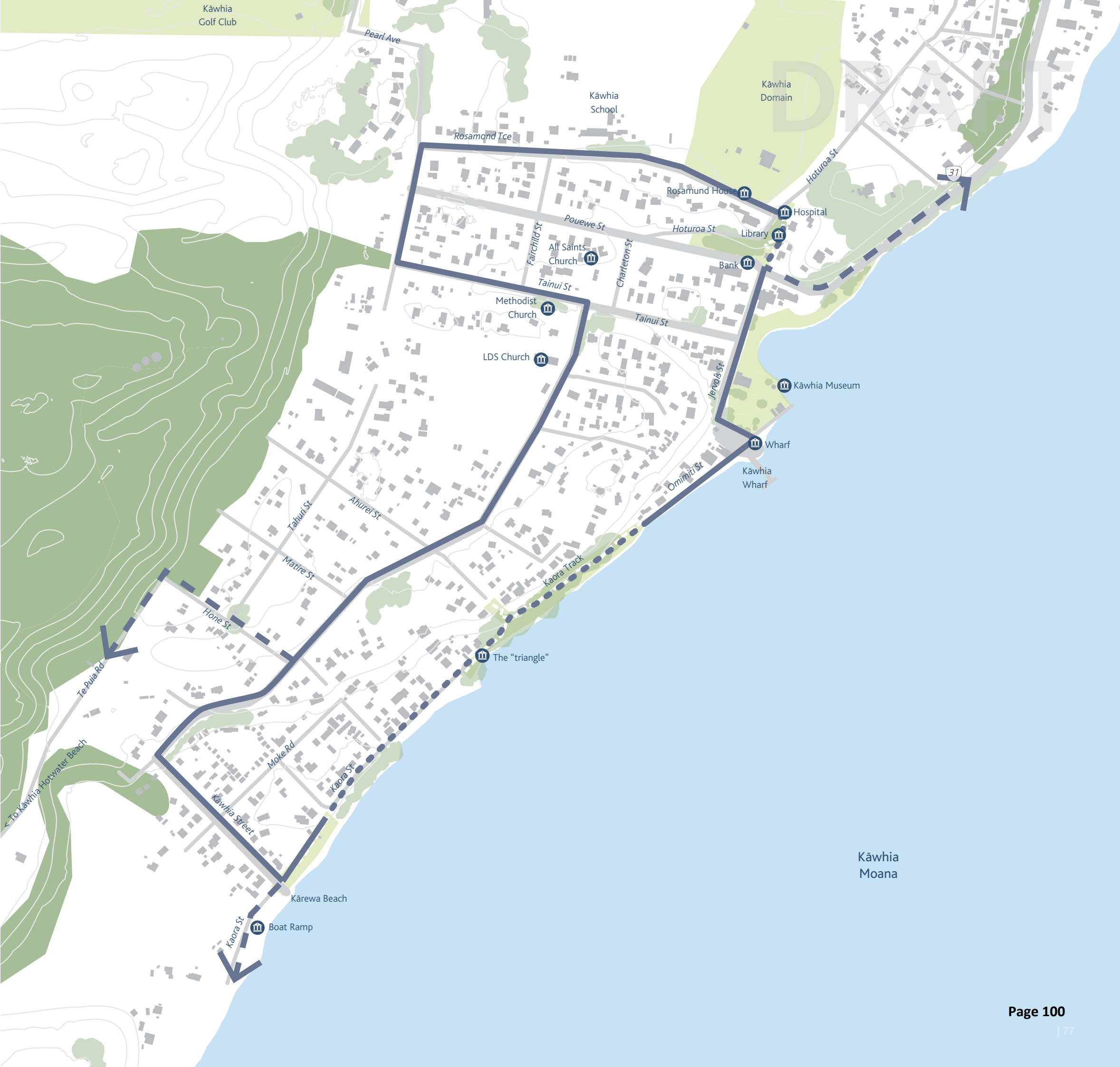
DEPENDENCIES

- Development of signage strategy.

KEY

- Establishing a Walking Loop
- Offroad connections
- Connections to the wider area
- Opportunities to protect and celebrate built heritage as part of Kāwhia townships character

Scale 1:5,000 @A3

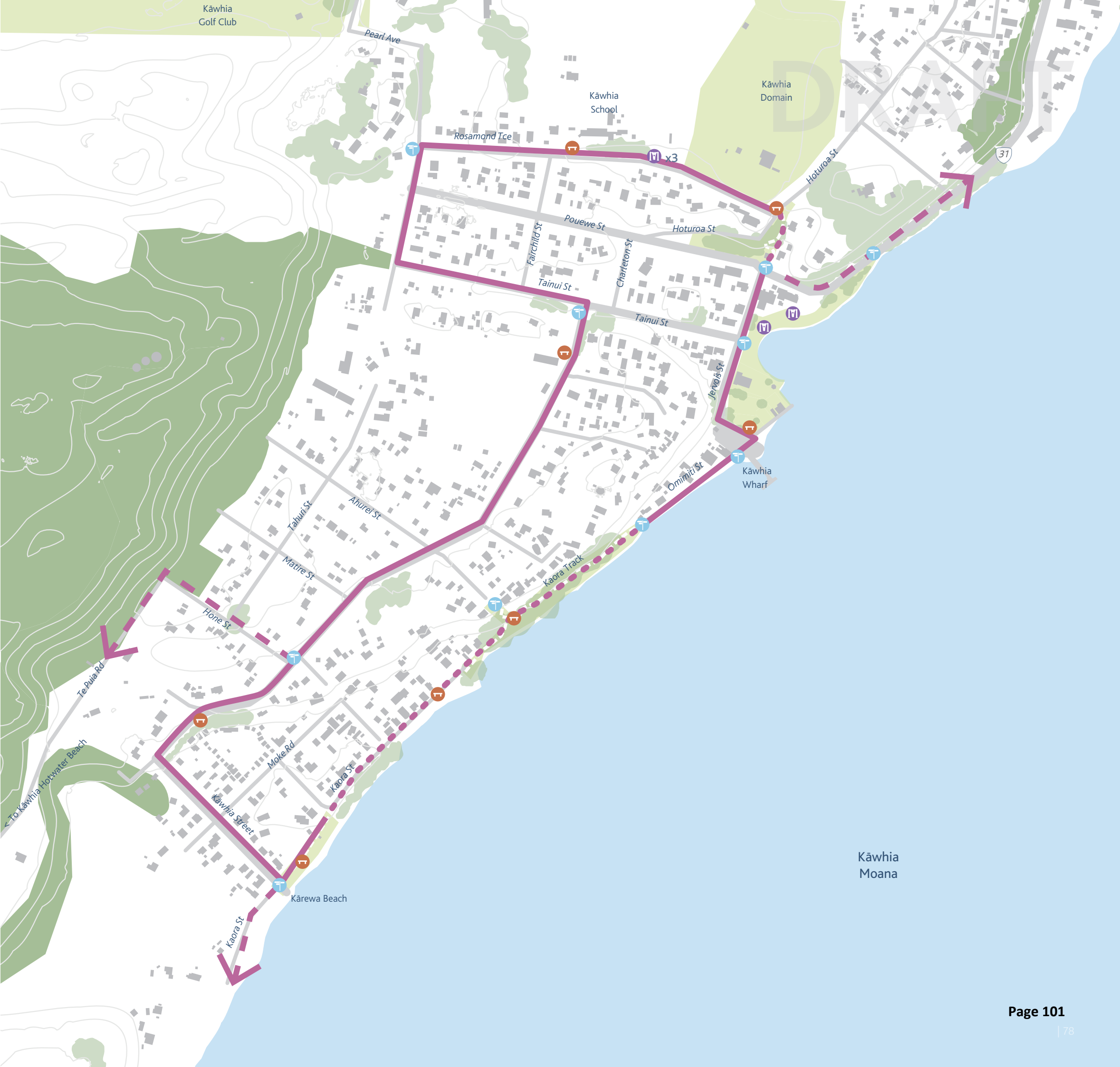


SIGNAGE, FURNITURE +
FITNESS TRAIL

KEY

- Establishing a Walking Loop
- Offroad connections
- Connections to the wider area
- Opportunities for signage
- Opportunities for furniture and seating
- Opportunities for fitness equipment

Scale 1:5,000 @A3



KEY ACTIONS SIGNAGE, FURNITURE + FITNESS TRAIL

DRAFT

SIGNAGE STRATEGY

Develop a bilingual signage strategy for Kāwhia, incorporating wayfinding signage, interpretive signage, compliance signage and gateway signage

Opportunity - Commission a local craftsperson/ tradesperson to design, build, implement and maintain signage around the Ōtorohanga District.

Opportunity- Enhanced gateway signage for Aotea to highlight entry to town and enhance local character

KEY PHASES

Strategy: Work with a designer to develop a signage strategy for the wider Ōtorohanga District that has a cohesive aesthetic language, but can be adapted in each area to ensure a distinctive local character, look and feel

Engagement: Work with mana whenua including Te Rūnanganui o Ngāti Hikairo, Te Rūnanga o Ngāti Mahuta ki Te Hauāuru in Kāwhia and Ngāti Te Wehi in Aotea to develop content for signage which may include, but is not limited to cultural narratives, historical information, local mātauranga, information on important taonga species as necessary

Work with Kāwhia Museum and other local knowledge holders to develop content relating to the built heritage and character in Kāwhia

Implementation: Construct and build wayfinding, interpretive, compliance and gateway signage around Kāwhia and Aotea in locations identified through this plan and further engagement with mana whenua and the Kāwhia Museum

DESIGN OBJECTIVES

- Cohesive aesthetic that reflects Kāwhia and wider Ōtorohanga rohe.
- Reinforces a sense of identity, sense of pride and belonging.
- Clear and legible.

- Durable and low maintenance.
- Easy to use and clean.
- Visible but not prominent.
- Durable and low maintenance.
- Visible but not prominent.
- Simple form of natural and recessive colours and materials suitable to the coastal context.

DEPENDENCIES

- Further engagement with project partners Te Rūnanganui o Ngāti Hikairo, Te Rūnanga o Ngāti Mahuta ki Te Hauāuru, Kāwhia Museum and other local historians.
- To be undertaken as part of the signage work currently being undertaken by the community board.
- Locations to be determined based on feedback

from mana whenua
FURNITURE STRATEGY

Develop a suite of preferred furniture items for Kāwhia that can be implemented around the Kāwhia Loop and other key locations around the township.

Opportunity - Commission a craftsperson to design, build, implement and maintain furniture around Kāwhia.

DESIGN OBJECTIVES

- Cohesive aesthetic that reflects Kāwhia and wider Ōtorohanga rohe.
- Reinforces a sense of identity, sense of pride and belonging.
- Durable and low maintenance.
- Easy to use and clean.
- Visible but not prominent.
- Explore using recycled hardwood timber or other local, durable, low-toxicity materials

DEPENDENCIES

- Locations to be determined based on feedback from mana whenua

FITNESS TRAIL

Work with the community group to design and implement fitness equipment around the Kāwhia Loop to integrate with and complement other elements, including trees, cultural heritage markers such as pou and kōwhatu, signage and wayfinding, and furniture.

DESIGN OBJECTIVES

- Exercise equipment is evenly distributed around the Kāwhia loop.
- Exercise equipment is accessible to a range of ages and abilities.
- Durable and low maintenance.
- Easy to use and clean.
- Visible but not prominent.

DEPENDENCIES

- Independent funding for design and implementation.
- Locations to be determined.

DRAFT



WAYFINDING SIGNAGE



DIRECTIONAL SIGNAGE



INTERPRETIVE SIGNAGE



COMPLIANCE SIGNAGE



BENCH SEAT



PICNIC TABLE

FURNITURE STRATEGY

**For Discussion - Further engagement with contractors and suppliers is required before confirming hard landscape strategy.*

DRAFT

Accessible Picnic Table



Type: (Custom) Accessible Picnic Set
Material: Accoya timber slat with powder coated steel frame.

Dimensions:
2400mm L x 740mm W x 800mm H (table)
2400mm L x 440mm W x 450mm H (bench)

Supplier: local supplier/fabricator

Picnic Table



Type: Adults Picnic / BBQ Table

Material: Structure/leg-frames - 150x40 H3 MG with double bolts. Table/seat top boards - 150x40 Premium H3 MG. Fasteners - Galvanised Ring-Shank Nails

Dimensions:
1800mm L x 1600mm W x 700mm H

Supplier: local supplier/fabricator

Bench Seat with Backrest



Type: Bench seats with backrest

Material: Hardwood timber

Dimensions: 3000mm L x 410mm W x 430mm

Supplier: local supplier/fabricator

Bench Seat



Type: Bench seats

Material: Hardwood wood timber

Dimensions: 3000mm L x 410mm W x 750mm

Supplier: local supplier/fabricator

Bins



Type: MODO60 Timber Tilt Rubbish Bin

Material: Hardwood timber slats + Galvanised steel frame

Dimensions: 456 mm Ø 532 mm W x 840 mm H

Supplier: Urban effects

Research suggests that the absence of rubbish bins in natural and remote places encourages people to take care of their own waste and take it with them when they leave the site.

As such, the only bins that will be recommended for the reserve would be those associated with the community facilities.

Cycle Stand



Type: Type A Cycle Stand

Material: Stainless steel

Finish: Brushed steel

Dimensions: 1000mm L x 800mm H x ø50.8

Supplier: Fel Group. Street Furniture

Timber Bollard



Type: Manakau Bollard 400mm (Removable)

Material: MCA pine post (circle) Recessed tamper/vandal proof UV resistant reflective strip. Cast into concrete 470mm. Deep removable key lock bollard.

Dimensions: 190mm W x 1369mm H

Supplier: Fel Group.

Timber Wheel-stops



Type: Timber wheelstop

Material: Treated timber bolted into concrete footings

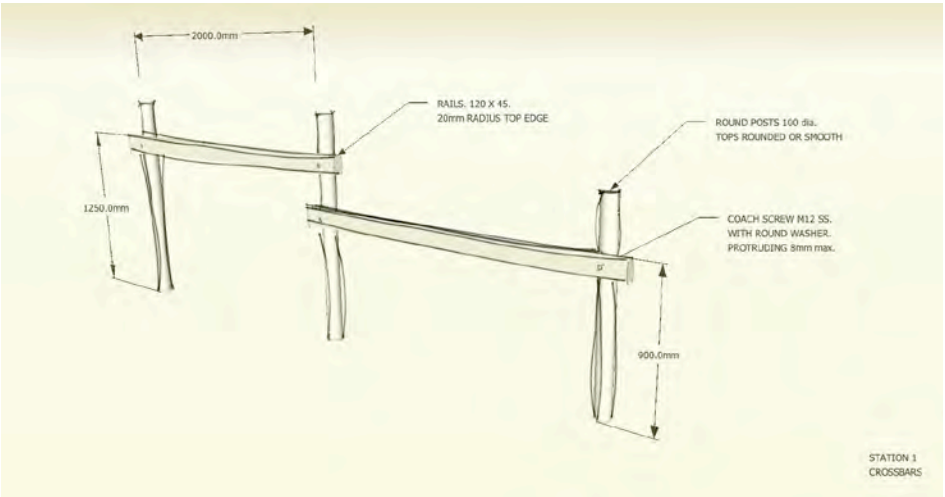
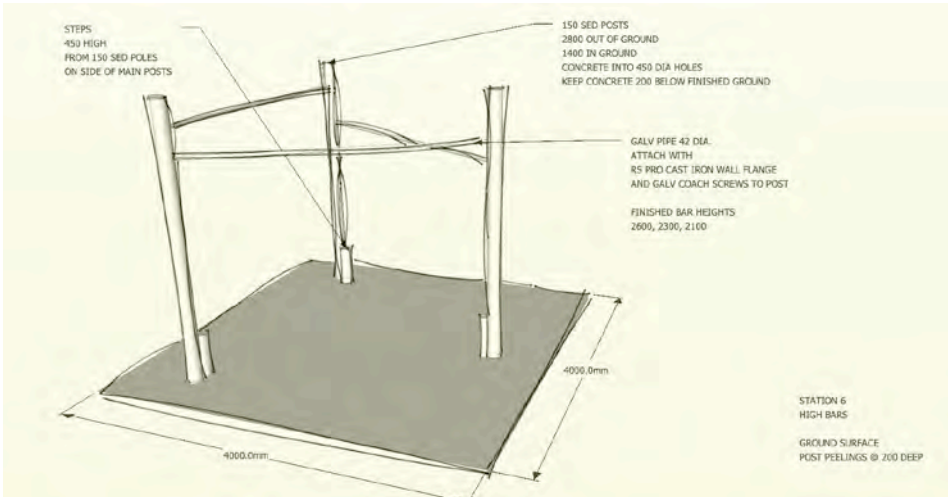
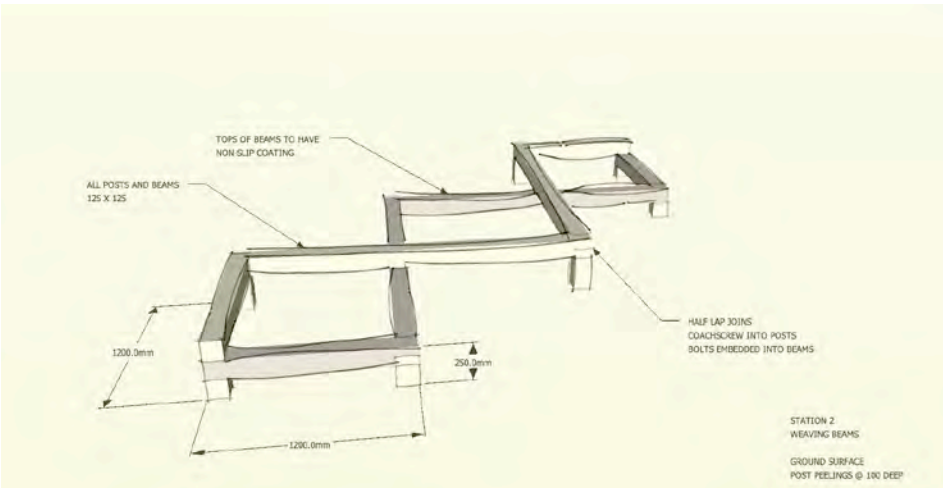
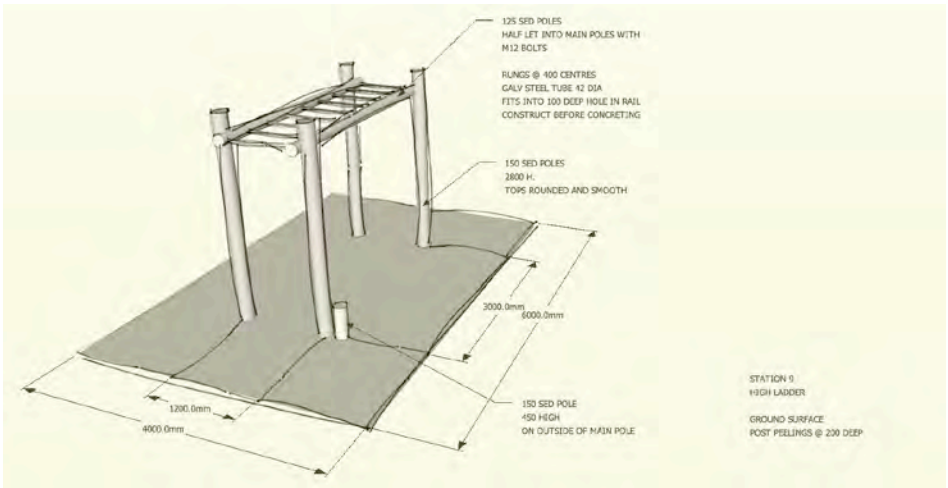
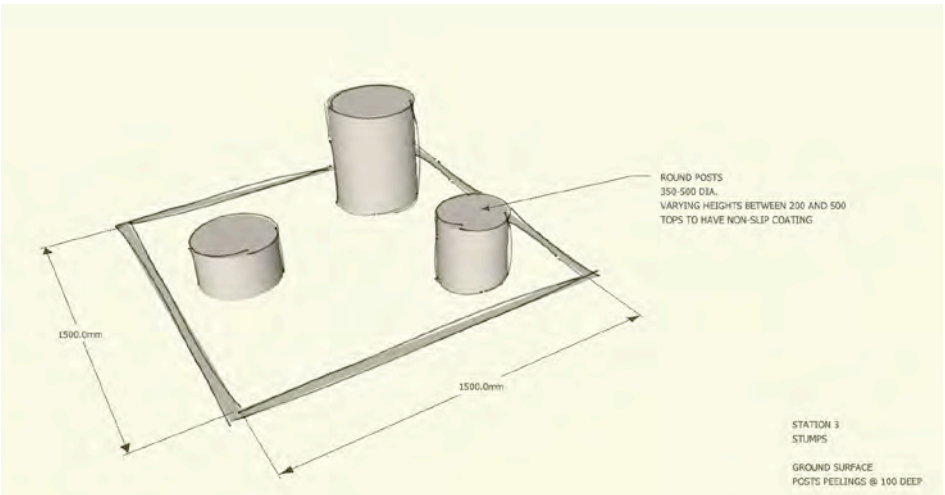
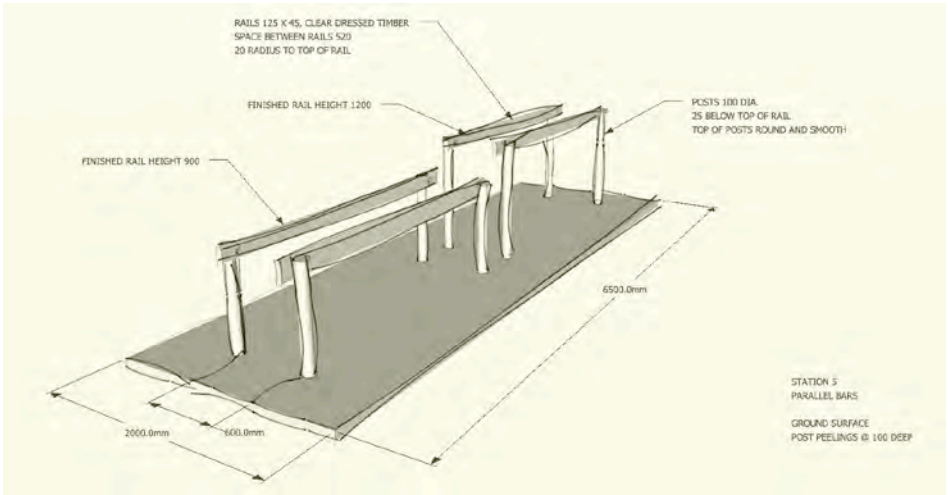
Dimensions: 250mm W x 150mmH x1369mm L with 2500m spacing (centre to centre)

Supplier: local supplier/fabricator

FITNESS TRAIL

DRAFT

Renders provided by the Kāwhia Community Fitness Trail Organisation as part of their ongoing work with the Kāwhia Community Board on this project



ACTION PLAN - KĀWHIA NETWORK

DRAFT

ACTION / PROJECT	DESCRIPTION OF KEY ACTIONS	PROJECT TYPE	KEY PHASES	DESIGN OBJECTIVES	DESIGN PARAMETERS	DEPENDENCIES	PROJECT READINESS
KĀWHIA LOOP							
Kāwhia Loop	Develop a walking loop around Kāwhia connecting reserves and public spaces through low-impact interventions, including a framework of street trees and other amenity planting, cultural heritage markers such as pou and kōwhatu, signage and wayfinding, furniture and exercise equipment.	Engagement	Work with Te Rūnanganui o Ngāti Hikairo, Te Rūnanga o Ngāti Mahuta ki Te Hauāuru and key stakeholders Te Whare Taonga o Kāwhia (Kāwhia Museum Committee), to identify key locations to highlight diverse cultural heritage sites for pou, kōwhatu and other cultural markers, and locate key areas that require protection to ensure that elements along the loop including planting, signage and wayfinding, fitness equipment and furniture are placed appropriately. Develop a Tree Framework for the walking loop including Jervois Street and other Kāwhia backstreets.	<ul style="list-style-type: none">• A clearly defined walking route that helps locals and visitors navigate the town, and tell stories of its history along the way.• Cohesive aesthetic that reflects Kāwhia and wider Ōtorohanga rohe.• Reinforces a sense of identity, sense of pride and belonging.	<ul style="list-style-type: none">• Engagement with Te Rūnanganui o Ngāti Hikairo and Te Rūnanga o Ngāti Mahuta ki Te Hauāuru.• Blue-green network strategy• Cultural heritage strategy• Built heritage strategy• Signage strategy• Furniture Strategy		Further scoping/design required

ACTION PLAN - KĀWHIA NETWORK CONT.

DRAFT

ACTION / PROJECT	DESCRIPTION OF KEY ACTIONS	PROJECT TYPE	KEY PHASES	DESIGN OBJECTIVES	DESIGN PARAMETERS	DEPENDENCIES	PROJECT READINESS
Blue Green Network	<p>Develop a blue-green network across Kāwhia to enhance, maintain and protect Kāwhia's biodiversity by creating an interconnected network composed of existing areas of ecological significance, intertidal zones, riparian corridors, patches of forest habitats and around the Kāwhia Loop.</p> <p>Opportunity - Resource and work with Ngāti Te Wehi and Ōkapu Marae in Aotea to implement planting in Aotea Beach Reserve</p> <p>Opportunity - Engage Te Rūnanganui o Te Rūnanganui o Ngāti Hikairo to understand their interest in working together to implement planting in Kāwhia Centre and the wider network(Note: Ngāti Te Wehi have already identified an interest in playing an active role in planting within Aotea Beach Reserve)</p> <p>Opportunity - Engage Te Rūnanga o Ngāti Mahuta ki Te Hauāuru and Maketū Marae to understand their interest in working together to implement planting in the wider network</p> <p>Opportunity - Resource and work with Te Taiao Kāwhia Moana planning the organisation, planting and ongoing maintenance of regeneration efforts in Kāwhia</p> <p>Opportunity - work with local nursery to support the regeneration of Kāwhia and Aotea.</p>	Strategy	Plans and schedules provided through the Aotea Kāwhia Plan identify key species for planting in a range of contexts including coastal forest regeneration and enrichment, intertidal zones, riparian and wetland planting and amenity and specimen tree planting in Kāwhia town centre and around the Kāwhia Loop.	<ul style="list-style-type: none">Reinforces a sense of identity, pride and belonging.Improve biodiversity and ecological connectivity.Ensure species are resilient and appropriate to the environmental and cultural context.Utilise eco sourced species where practical.Street Tree Framework should use large scale trees to suit rural character.Identify environmental targets for canopy coverage and the extent of ecosystem coverage.Encourage and support Kāwhia residents to play an active role in the care, protection, restoration and regeneration of their parks, reserves and streets.			Ready to go
Cultural Heritage	Continue to work alongside Te Rūnanganui o Ngāti Hikairo, Te Rūnanga o Ngāti Mahuta ki Te Hauāuru and Maketū Marae to confirm how cultural landscapes and sites of significance can be protected and, where appropriate, highlighted and celebrated through the Kāwhia rohe	Engagement	Engage with Te Rūnanganui o Ngāti Hikairo, Te Rūnanga o Ngāti Mahuta ki Te Hauāuru and Maketū Marae to understand how they would like to protect, celebrate, and where appropriate, highlight their cultural heritage across Kāwhia	<ul style="list-style-type: none">To be determined through engagement.	<ul style="list-style-type: none">Availability and resourcing of council and mana whenuaDevelopment of Signage Strategy.		Further scoping/design required

ACTION PLAN - KĀWHIA NETWORK CONT.

DRAFT

ACTION / PROJECT	DESCRIPTION OF KEY ACTIONS	PROJECT TYPE	KEY PHASES	DESIGN OBJECTIVES	DESIGN PARAMETERS	DEPENDENCIES	PROJECT READINESS
		Design and Implementation	Work with mana whenua and ringatoi to develop pou, kōwhatu and other mahi toi, as appropriate		<ul style="list-style-type: none">• Availability and resourcing of council and Te Rūnanganui o Ngāti Hikairo.• Development of Signage Strategy.		
Kāwhia Character and Built Heritage	<p>Work with Kāwhia Museum and local experts to identify and highlight historic structures and locations in and around Kāwhia township to document and, where appropriate, highlight Kāwhia's character and heritage.</p> <p><i>Opportunity – Work with Kāwhia Museum as the caretakers of this knowledge to host information about built heritage in Kāwhia, whether online or in physical form</i></p> <p><i>Opportunity – Work with Kāwhia Museum to identify opportunities to incorporate some of this information into the signage strategy.</i></p>	Strategy	Work with Kāwhia Museum and other local experts to identify a historical narrative for the built heritage in Kāwhia involving of all interested parties	<ul style="list-style-type: none">• Cohesive aesthetic that reflects Kāwhia and wider Ōtorohanga rohe.• Reinforces a sense of identity, sense of pride and belonging.	<ul style="list-style-type: none">• Development of Signage Strategy.		Further scoping/design required
Furniture Strategy	<p>Develop a suite of preferred furniture items for Kāwhia that can be implemented around the Kāwhia Loop and other key locations around the township.</p> <p><i>Opportunity – Commission a craftsperson to design, build, implement and maintain furniture around Kāwhia.</i></p>	Strategy		<ul style="list-style-type: none">• Cohesive aesthetic that reflects Kāwhia and wider Ōtorohanga rohe.• Reinforces a sense of identity, sense of pride and belonging.• Durable and low maintenance.• Easy to use and clean.• Visible but not prominent.• Explore using recycled hardwood timber or other local, durable, low-toxicity materials.	<ul style="list-style-type: none">• Locations to be determined.		Ready to go

ACTION PLAN - KĀWHIA NETWORK CONT.

DRAFT

ACTION / PROJECT	DESCRIPTION OF KEY ACTIONS	PROJECT TYPE	KEY PHASES	DESIGN OBJECTIVES	DESIGN PARAMETERS	DEPENDENCIES	PROJECT READINESS
Fitness Trail	Work with the community group to design and implement fitness equipment around the Kāwhia Loop to integrate with and complement other elements, including trees, cultural heritage markers such as pou and kōwhatu, signage and wayfinding, and furniture.	Built project		<ul style="list-style-type: none">Exercise equipment is evenly distributed around the Kāwhia loop.Exercise equipment is accessible to a range of ages and abilities.Durable and low maintenance.Easy to use and clean.Visible but not prominent.	<ul style="list-style-type: none">Independent funding for design and implementation.Locations to be determined.		Ready to go
Signage Strategy	Develop a bilingual signage strategy for Kāwhia, incorporating wayfinding signage, interpretive signage, compliance signage and gateway signage <i>Opportunity - Commission a local craftsperson/tradesperson to design, build, implement and maintain signage around the Ōtorohanga District.</i> <i>Opportunity- Enhanced gateway signage for Aotea to highlight entry to town and enhance local character.</i>	Strategy	<ul style="list-style-type: none">Work with a designer to develop a signage strategy for the wider Ōtorohanga District that has a cohesive aesthetic language, but can be adapted in each area to ensure a distinctive local character, look and feel.	<ul style="list-style-type: none">Cohesive aesthetic that reflects Kāwhia and wider Ōtorohanga rohe.Reinforces a sense of identity, sense of pride and belonging.Clear and legible.Durable and low maintenance.Easy to use and clean.Visible but not prominent.	<ul style="list-style-type: none">Further engagement with project partners Te Rūnanganui o Ngāti Hikairo, Te Rūnanga o Ngāti Mahuta ki Te Hauāuru, Kāwhia Museum and other local historians.To be undertaken as part of the signage work currently being undertaken by the community board.Locations to be determined.		Further scoping/design required
		Engagement	<ul style="list-style-type: none">Work with Te Rūnanganui o Ngāti Hikairo and Te Rūnanga o Ngāti Mahuta ki Te Hauāuru in Kāwhia and Ngāti Te Wehi in Aotea to develop content for signage which may include, but is not limited to cultural narratives, historical information, local mātauranga, information on important taonga species as necessary				
		Implementation	<ul style="list-style-type: none">Work with Kāwhia Museum and other local knowledge holders to develop content relating to the built heritage and character in Kāwhia.Construct and build wayfinding, interpretive, compliance and gateway signage around Kāwhia and Aotea in locations identified through this plan and further engagement with mana whenua and the Kāwhia Museum.				

ACTION PLAN - KĀWHIA NETWORK CONT.

DRAFT

ACTION / PROJECT	DESCRIPTION OF KEY ACTIONS	PROJECT TYPE	KEY PHASES	DESIGN OBJECTIVES	DESIGN PARAMETERS	DEPENDENCIES	PROJECT READINESS
ADDITIONAL PROJECTS							
Upgrade Public Toilet	Upgrade the existing toilet on Kaora Track with a new, single-cubicle high-performance toilet.	Built project		<ul style="list-style-type: none">Durable and low maintenance.Visible but not prominent.Simple form of natural and recessive colours and materials.	<ul style="list-style-type: none">Water Source	Size: Single Cubicle Toilet Facility - 1900 x 1600 mm min to meet accessibility compliance. Quantity: 1 Materiality: Standard waste water connected or septic tank toilet unit. External cladding material or finish to feature natural or recessive colours - coordinated to match shelter structure.	Ready to go
Local Business Development Strategy	Develop an economic strategy for Kāwhia to support businesses returning to Jervois Street and create opportunities for local livelihoods and long-term local careers.	Strategy	ŌDC invites submissions on the development of a local business strategy and are responsible for developing and implementing strategy	<ul style="list-style-type: none">Encourage investment in the rejuvenation of Kāwhia's main street and town centre.Create local employment opportunities.	<ul style="list-style-type: none">Community buy-in and support.		Further scoping/design required
Redevelop foreshore post-Pōhutukawa removal	Work with mana whenua, local community and local board to develop a strategy and design to frame the entrance to Kāwhia where Pōhutukawa are to be removed	Built project	<ul style="list-style-type: none">Work with Te Rūnanganui o Ngāti Hikairo to understand whether they want to highlight or protect the area as a cultural heritageWork with community and mana whenua to explore options for the town gatewayRemove stump stumps, level ground and re-sow grass Opportunity- Call for expressions of interest for the design of the footpath and verge				Further scoping/design required

DRAFT

APPENDIX A —PLANT SCHEDULES FOR KĀWHIA AND AOTEA

PLANTING MIXES REGENERATION

Regeneration planting includes coastal forest, intertidal salt marsh and coastal dunelands (in Aotea) and will require ongoing weed management and maintenance going forward to ensure the long term ecosystem benefits are achieved

COASTAL FOREST

BOTANICAL NAME	MĀORI / COMMON NAME	LOW (>0.5M)	MEDIUM (0.5-3M)	TALL (<3M)
Primary Successional Species				
<i>Pittosporum crassifolium</i>	Karo			
<i>Cordyline australis</i>	Tī Kouka			
<i>Kunzea robusta</i>	Kānuka			
<i>Leptospermum Scoparium</i>	Mānuka			
<i>Melicytus ramiflorus</i>	Māhoe			
<i>Myoporum laetum</i>	Ngaio			
<i>Pseudopanax lessonii</i>	Houpara			
<i>Phormium tenax</i>	Harakeke			
<i>Veronica stricta</i>	Koromiko			
<i>Entelea arborescens</i>	Whau			
Enrichment Planting				
<i>Alectryon excelsus</i>	Tītoki			
<i>Vitex lucens</i>	Pūriri			
<i>Corynocarpus laevigatus</i>	Karaka			
<i>Nestegis apetala</i>	Coastal maire			
<i>Metrosideros excelsa</i>	Pōhutukawa			
<i>Podocarpus totara</i>	Tōtara			
<i>Melicope ternata</i>	Wharangi			
<i>Blechnum novae-zelandiae</i>	Kiokio			
<i>Astelia grandis</i>	Swamp astelia			
<i>Hedycarya arobrea</i>	Pigeonwood			

DRAFT

INTERTIDAL SALT MARSH REGENERATION

BOTANICAL NAME	MĀORI / COMMON NAME	LOW (>0.5M)	MEDIUM (0.5-3M)	TALL (<3M)
<i>Juncus kraussi</i>	Wiwi			
<i>Apodasmia similis</i>	Oioi			
<i>Bolboschoenus fluviatilis</i>	Kukuraho			
<i>Plagianthus divaricatus</i>	Salt marsh ribbonwood			
<i>Sarcornia quinqueflora</i>	Ureure / glasswort			
<i>Selliera radicans</i>	Remuremu			
<i>Samolus repens</i>	Māakoako / sea primrose			
<i>Cotula coronofolia</i>	bachelors button			

COASTAL DUNE RESTORATION

BOTANICAL NAME	MAAORI NAME	LOW (>0.5M)	MEDIUM (0.5-3M)	TALL (<3M)
<i>Spinifex sericeus</i>	Spinifex			
<i>Desmoschoenus spiralis</i>	Pīngao			
<i>Calystegia soldanella</i>	Sand convolvulus			
<i>Poa billardierei</i>	Sand tussock			
<i>Carex pumila</i>	Sand carex			
<i>Pimelia arenaria</i>	Sand daphne			
<i>Pimelea prostrata</i>	Pinātoro			

PLANTING MIXES FOR RESERVES AND STREETS

DRAFT

STREET AND SPECIMEN TREES

BOTANICAL NAME	MAAORI NAME	LOW (>0.5M)	MEDIUM (0.5-3M)	TALL (<3M)
<i>Alectryon excelsus</i>	Tītoki			
<i>Sophora Chathamica</i>	Kōwhai			
<i>Nestegis apetala</i>	Coastal maire			
<i>Podocarpus totara</i>	Tōtara			
<i>Metrosideras excelsus</i>	Pōhutukawa			
<i>Corynocarpus laevigatus</i>	Karaka			
<i>Sophora microphylla</i>	Kōwhai			
<i>Olearia albida</i>	Tanguru			
<i>Platanus x acerifolia</i>	London Plane			

SHELTERBELT PLANTING

BOTANICAL NAME	MAAORI NAME	LOW (>0.5M)	MEDIUM (0.5-3M)	TALL (<3M)
<i>Pittosporum crassifolium</i>	Karo			
<i>Dodonea viscosa</i>	Akeake			
<i>Pseudopanax lessonii</i>	Houpara / five-finger			
<i>Corynocarpus laevigatus</i>	Karaka			
<i>Pittosporum tenuifolium</i>	Kōhūhū			

COASTAL AMENITY PLANTING

BOTANICAL NAME	MAAORI NAME	LOW (>0.5M)	MEDIUM (0.5-3M)	TALL (<3M)
Low Amenity				
<i>Selliera radicans</i>	Remuremu			
<i>Mazus radicans</i>	Swamp musk			
<i>Coprosma acerosa</i>	Sand coprosma			
<i>Coprosma repens</i>	Taupata			
<i>Pimelea prostrata</i>	Pinātoro			
<i>Euphorbia glauca</i>	Waiū-atua			
<i>Arthropodium bifurcatum</i>	Rengarenga Lily			
<i>Notogrammitis billardierei</i>	Paretao			
<i>Asplenium oblongifolium</i>	Paretao			
Medium Amenity				
<i>Muhlenbeckia astonii</i>	Pōhuehue			
<i>Apodasmia similis</i>	Oioi			
<i>Libertia grandiflora</i>	Mīkoikoi			
<i>Muehlenbeckia astonii</i>	Shrubby tororaro			
<i>Phormium cookianum</i> 'Emerald Gem'	Wharariki / Emerald Gem (Dwarf)			
<i>Pseudopanax lessonnii</i> 'Cyril Watson'	Houpara 'Cyril Watson'			

Information only reports**Ngā pūrongo mōhiohio anake**

There are no reports.

Public excluded**Take matatapu**

There are no reports.

Board Member updates**Ngā kōrero hou a ngā Kaikaunihera**

All Board Members will be invited by the Chairperson to provide a verbal update to the meeting.

Board projects**Project 1: Kāwhia Storyboards****Community Board discretionary fund**

Any decision to allocate the Board's funds must be made to promote the social, economic, environmental, and cultural well-being of the Kāwhia and Aotea community in the present and for the future.

Date of grant	Resolution #	Recipient	Purpose	Amount (excl. GST)
3/10/24	K81	Kāwhia Kai Festival	Event funding	1,000
7/11/24	K86	Kāwhia Kai Festival	Resolution K81 rescinded	-1,000
5/12/24	K94	Annie Mahara	Hall hire for Operation Kai 4 All	417.40
3/04/25	K104	Kāwhia Hauora Club	Hall hire for 25 fitness group sessions	500.00
8/05/25	K109	Jasmine Teei	Kāwhia Kaumatua programme	1,500.00
8/05/25	K110	Kāwhia RSA	ANZAC Day service 2025	540.00
8/05/25	K111	Annie Mahara	Hall hire for Operation Kai 4 All	540.00
8/05/25	K112	Kāwhia Hauora Club	Hall hire for 25 fitness group sessions	540.00

Total granted	4,037.40
Total remaining	962.60

Resolution Register

Previous resolutions of the Kāwhia Community Board which are not yet finalised are outlined below.

Resolution #	Date	Resolution	Staff update
N/A	26/2/21	That a meeting be held with recreational and commercial users of the Kāwhia wharf to discuss: a) costs required to maintain the wharf asset	The development of an asset management plan for the wharf structure is on hold. Staff recommend the Resolution is retained on the Register.
05/12/24	K91	That the Kāwhia Community Board: a) receives the feedback from the community from the consultation period and b) approves the removal of 12 trees including 10 Pōhutukawa along the seawall to the left of Pouewe St on the main entrance to Kāwhia as identified in the October 2024 report (document number 781672). c) Requests the trees are identified via marking for community awareness prior to their removal. d) Requests the wood is offered to local marae and the community for re-use.	The removal of the trees is still planned to go ahead and will be rescheduled once staff are confident that the removal will not be interrupted by protesters against the removal. It is recommended that this Resolution be retained until the trees have been removed and an update provided to the Board.
03/04/25	K101	Item 33 - New community noticeboard proposal That the Kāwhia Community Board approve the new noticeboard be sited in the outside foyer of the Kāwhia Community Hall, in principle, subject to a final design.	This resolution stands, but the noticeboard update project is no longer being progressed by the College. Staff recommend the Board confirm if they wish to progress the upgrade to the noticeboard as a board project.
03/04/25	K102	Item 33 - New community noticeboard proposal That the Kāwhia Community Board approve the design brief and staff to liaise with Deputy Chairperson Whiu on the design.	This resolution stands, but the noticeboard project is no longer being led by the College.

03/04/25	K103	<p>Item 33 - New community noticeboard proposal</p> <p>That staff report back to the Kāwhia Community Board on the proposed design, funding options and funding request.</p>	If the Board wish to progress an upgrade to the noticeboard as a board project, staff will report back on funding.
08/05/25	K107	<p>Item 34 – Kāwhia boat parking</p> <p>That the Kāwhia Community Board:</p> <ol style="list-style-type: none"> a. Support the continuation of the historic agreement with the owners of the land on Kaora Street noting that: <ol style="list-style-type: none"> i. ŌDC would continue to pay the Rates on the land in compensation; and ii. The boat parking area remains as it is currently; and b. Recommend that ŌDC investigate the overall parking situation in Kāwhia, particularly around the Wharf and Boat Ramp area and prepare a full report on various options for enforcement and potential charging; and c. Recommend that ŌDC enter into a formal lease agreement discussion with the landowners. 	<p>A report is expected to be presented to ŌDC at their July meeting.</p> <p>Staff recommend this Resolution be retained on the Register until ŌDC make a decision.</p>
05/06/25	K115	<p>Item 35 - Kāwhia Community Centre hire charges for 2025/26</p> <p>Refer to the Minutes for the full Resolution.</p>	<p>The recommendation to ŌDC was approved at their 24 June meeting without changes. The recipients of the waived fees have been advised.</p> <p>Staff recommend this Resolution be removed from the Register.</p>
05/06/25	K116	<p>Item 36 - Kāwhia Community Board Discretionary Fund</p> <p>That the Kāwhia Community Board recommend to Ōtorohanga District Council that any balance left in the Kāwhia Community Board Discretionary fund as at 30 June 2025 be carried over to the following financial year and be included in the carryover schedule for adoption by Council in September.</p>	<p>ŌDC will make a decision on this recommendation at their September meeting.</p> <p>Staff recommend this Resolution be retained on the Register until ŌDC make a decision.</p>

That the Kāwhia Community Board approve the removal of Resolution K115 from the Register.

Closing prayer/reflection/words of wisdom**Karakia/huritao/whakataukī**

The Chairperson will invite a Member to provide the closing words and/or prayer/karakia.

Meeting closure**Katinga o te hui**

The Chairperson will declare the meeting closed.

Workshops/briefings

Monthly discussion with staff on items raised in public forum or outstanding matters.

For use in both opening and closing meetings

A Member will provide the words of their preference or may choose to use the following:

Mā te whakapono	<i>By believing and trusting</i>
Mā te tūmanako	<i>By having faith and hope</i>
Mā te titiro	<i>By looking and searching</i>
Mā te whakarongo	<i>By listening and hearing</i>
Mā te mahi tahi	<i>By working and striving together</i>
Mā te aroha	<i>By all being done with compassion</i>
Ka taea e tātou	<i>We will succeed</i>

For use in blessing food

A Member will provide the words of their preference or may choose to use the following:

Nau mai e ngā hua o te wao	<i>I welcome the gifts of food from the forest</i>
O te ngakinga	<i>From the cultivated gardens</i>
O te wai tai	<i>From the sea</i>
O te wai māori	<i>From the fresh waters</i>
Hei oranga mō tātou	<i>For the goodness of us all</i>
Tūturu whakamaua	<i>Let this be my commitment to all!</i>
Kia tina! Tina! Hui e! Tāiki e!	<i>Drawn together and affirmed!</i>