

# Otorohanga Inkling S

News from Otorohanga District Library

ISSUE 13 - AUGUST 2006

## Montana Poetry Day

Montana Poetry Day was celebrated by young and old last month.

Part of an international day of prose and verse, Montana Poetry Day, held on 21 July, aims to make poetry accessible to all.

This year Janice Marx organised Otorohanga's poetry reading, calling on poetry enthusiasts of all ages to share their favourite published works, or poems of their own.

Otorohanga College's Sophie Loomans, Dayna Levi, and Alix Whiteman excelled in the presentation of their favourite



poetic works, with Alix and local poet Mataroa Frew bringing a bi-cultural dimension to the day.

Among those to share original works were Katrina Claydon, and Mr David Clark of Beattie

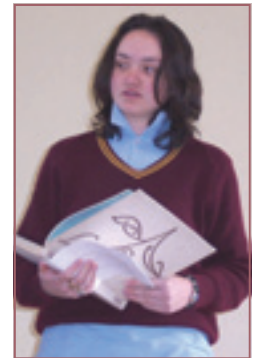
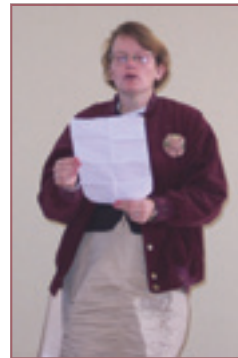
Home, who shared his humorous reflections on 50 years of marriage to his wife Pat.

This year's winner of the Montana Poetry Award was Bill Manhire for *Lifted*.

His win was announced to coincide with various poetry promotions throughout New Zealand, including *Poetry in Motion* – a series of live poetry readings on buses in Hamilton.



Janice Marx (above) organised a poetry reading attended by more than 30 poetry enthusiasts. Many attendees, including those pictured below, shared their favourite works.



Hours: Mon-Fri 8am-5pm  
Phone: 07 873 8199  
Fax: 07 873 7991  
Email: [info@otodc.govt.nz](mailto:info@otodc.govt.nz)

Address:  
17 Maniapoto St  
PO Box 11  
OTOROHANGA

[www.otodc.govt.nz](http://www.otodc.govt.nz)

### OTOROHANGA LIBRARY

#### Hours:

Monday - Thursday 9am-5pm  
Friday 9am-5:30pm  
Saturday 10am-12:30pm  
Phone: 07 873 7175  
Fax: 07 873 7175  
Email: [otolib@xtra.co.nz](mailto:otolib@xtra.co.nz)

### KAWHIA LIBRARY

#### Hours:

Tuesday 1:30pm-3pm  
Wednesday 10:30am-11:30am  
Friday - Saturday 1:30pm-3pm  
Phone: 07 871 0248 or  
Suzzarna Henry 07 871 0011  
E-Mail: [kawlib@xtra.co.nz](mailto:kawlib@xtra.co.nz)

## Share your treasures...



If you have any collectables to display, please contact Jocelyn Holt on (07) 873 8813 or the library. Collections are displayed in the library for a six-week period.

## NZ research a click away

While the EPIC databases are an excellent reference resource for adults and children, they do not specialize in material with New Zealand content.

For those of you researching New Zealand topics, the National Library [www.natlib.govt.nz](http://www.natlib.govt.nz) offers online digital collections that can be accessed from your home computer, without a password.

The following information about two of these collections is from the Library's publicity brochure:

### **Timeframes** [timeframes.natlib.govt.nz](http://timeframes.natlib.govt.nz)

Timeframes is an online database of more than 22,000 paintings, drawings, portraits and photographs from the Alexander Turnbull Library relating to New Zealand's heritage.

You can browse the collection by subject or search by a word or phrase. High quality image copies can be ordered using the 'shopping basket' facility.

### **Matapihi** [www.matapihi.org.nz](http://www.matapihi.org.nz)

Matapihi is a window into the online collections of a number of New Zealand cultural organisations. It enables you to search across the digital collections of different New Zealand organisations from one website for information about New Zealand history, arts, people, nature and society.

Please talk to your local library staff if you require help with accessing these resources.

- District Librarian  
Sarah Osborne

# Glowworm book club



## More Balloon Magic

Last month we featured pictures from our first Balloon Magic session on 4 July, this time it's kids who came on 7 July.

In total, 75 children took part in last month's school holiday programme, lead by Alista Fow of The Magic Company.

Thanks to Tara Tucker of Otorohanga College, and all the other helpers who supported this activity, and to all the children who were fantastic participants!



GLOWWORM Book Club

